

# IUP Wireless and Wired Setup via [iconnect.iup.edu](http://iconnect.iup.edu)

A web-based utility called [iconnect.iup.edu](http://iconnect.iup.edu) now makes it easier to configure and connect to the IUP wired or wireless network, regardless of your platform (PC or Mac) or operating system. [iconnect.iup.edu](http://iconnect.iup.edu) can be used to:

- Connect to the IUP wireless network
- Connect to the wired network in the residence halls and suites
- Connect to the guest wireless network

**You must know your IUP username and network password to use [iconnect](http://iconnect.iup.edu).** See [www.iup.edu/itsupportcenter/resetnetwork](http://www.iup.edu/itsupportcenter/resetnetwork) for instructions to reset your network password.

To use [iconnect.iup.edu](http://iconnect.iup.edu) to connect your machine to the wired network, you must connect your machine to an active jack in your residence hall room, using an Ethernet cable.

To use [iconnect.iup.edu](http://iconnect.iup.edu) to connect your machine to the wireless network, you must, you must be connected to another network (wired or wireless).

1. Open a web browser and go to <http://iconnect.iup.edu>.

2. The network setup will begin. **Select** the box to accept the terms of the End-User License Agreement, then click **Start**.

3. XpressConnect will attempt to load. You may be prompted with a security warning. **Deselect** the check box to "Always trust content from this Publisher", then click **Run**. (Mac users will select Trust.)



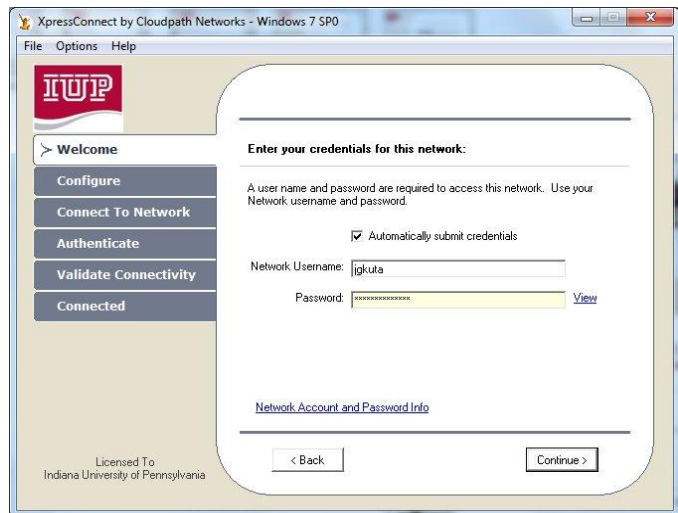
## ***iconnect Setup Instructions***

4. XpressConnect will begin. You will be asked to select which network you would like to join. Select one of the options and click **Continue**. To connect your laptop using both wired and wireless, you will have to run the procedure twice, once for wired and once for wireless.

If you try to connect to the wired network, and you haven't connected an Ethernet cable between your computer and the network jack, you will see a warning message, and you will have to connect the cable before continuing.

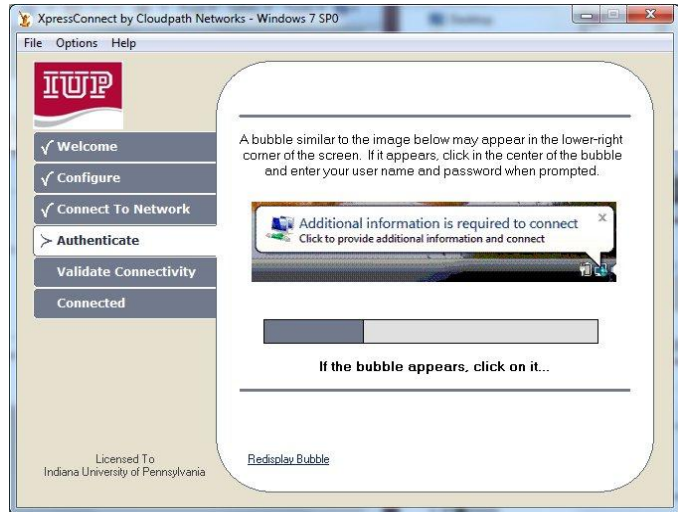
5. You will be prompted to enter your credentials for the IUP network. Enter your IUP username and your network password. Click **Continue**.

Note: You can reset your network password in URSA. Be sure to turn off all wireless devices when doing so. **Do not change your network password while you are connected to the network using a wireless device.**

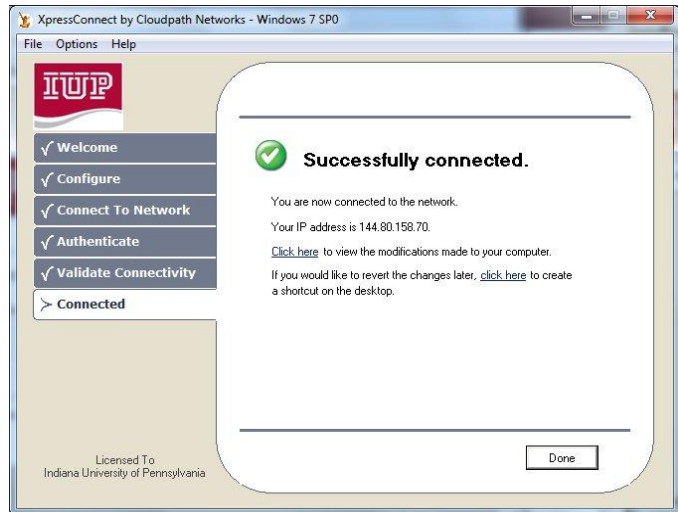


## *iconnect Setup Instructions*

6. XpressConnect will attempt to verify your username and password on the IUP network. You can disregard the bubble that may appear asking for additional information.



7. If you've entered the correct password, and you've successfully connected your machine in your residence hall room or on the wireless network, you will see a dialog box similar to the one at right. Click **Done**.



**Wireless Connections:** If you are not within range of the network, or your wireless network card is not turned on, you will see the dialog box at right. If you are within range, verify that your wireless network card is turned on, then click **Retry**. If you are not within range, click the Close button in the upper right corner of the dialog box. The next time you are using your machine on campus, you should be able to connect if you are within range of a wireless access point.

