

# opendoors® 20|13 "Fast Facts"

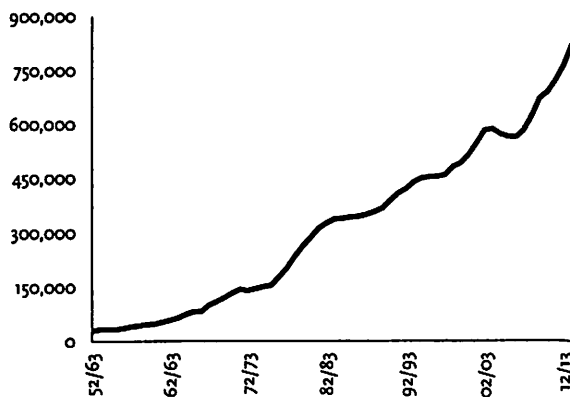
## INTERNATIONAL STUDENTS IN THE U.S.

### A. NEW INTERNATIONAL STUDENT ENROLLMENT

New international student enrollment – students enrolling for the first time at a U.S. institution in fall	Year	Total	% Change
	2007/08	173,121	10.1
	2008/09	200,460	15.8
	2009/10	202,970	1.3
2012 – increased 9.8% over the previous year.	2010/11	214,490	5.7
	2011/12	228,467	6.5
	2012/13	250,920	9.8

### B. INTERNATIONAL STUDENT TRENDS

In 2012/13, the number of international students in the U.S. increased 7.2% to a record high of 819,644 students.



Year	Total Int'l	% Change	U.S. Higher Ed Total*	% Int'l
2001/02	582,996	6.4	15,928,000	3.7
2002/03	586,323	0.6	16,612,000	3.5
2003/04	572,509	-2.4	16,911,000	3.4
2004/05	565,039	-1.3	17,272,000	3.3
2005/06	564,766	-0.05	17,487,000	3.2
2006/07	582,984	3.2	17,672,000	3.3
2007/08	623,805	7.0	17,958,000	3.5
2008/09	671,616	7.7	18,264,000	3.7
2009/10	690,923	2.9	20,428,000	3.4
2010/11	723,277	4.7	20,550,000	3.5
2011/12	764,495	5.7	20,625,000	3.7
2012/13	819,644	7.2	21,253,000	3.9

\* Data from the National Center for Education Statistics

### C. TOP PLACES OF ORIGIN of International Students

Rank	Place of Origin	2011/12	2012/13	% of Total	% Change
	<b>WORLD TOTAL</b>	<b>764,495</b>	<b>819,644</b>	<b>100.0</b>	<b>7.2</b>
1	China	194,029	235,597	28.7	21.4
2	India	100,270	96,754	11.8	-3.5
3	South Korea	72,295	70,627	8.6	-2.3
4	Saudi Arabia	34,139	44,566	5.4	30.5
5	Canada	26,821	27,357	3.3	2.0
6	Taiwan	23,250	21,867	2.7	-5.9
7	Japan	19,966	19,568	2.4	-2.0
8	Vietnam	15,572	16,098	2.0	3.4
9	Mexico	13,893	14,199	1.7	2.2
10	Turkey	11,973	11,278	1.4	-5.8
11	Brazil	9,029	10,868	1.3	20.4
12	Germany	9,347	9,819	1.2	5.0
13	United Kingdom	9,186	9,467	1.2	3.1
14	Nepal	9,621	8,920	1.1	-7.3
15	Iran	6,982	8,744	1.1	25.2
16	France	8,232	8,297	1.0	0.8
17	Hong Kong	8,032	8,026	1.0	-0.1
18	Indonesia	7,131	7,670	0.9	7.6
19	Nigeria	7,028	7,316	0.9	4.1
20	Thailand	7,626	7,314	0.9	-4.1
21	Malaysia	6,743	6,791	0.8	0.7
22	Colombia	6,295	6,543	0.8	3.9
23	Venezuela	6,281	6,158	0.8	-2.0
24	Kuwait	3,722	5,115	0.6	37.4
25	Spain	4,924	5,033	0.6	2.2

### D. ACADEMIC LEVEL TRENDS of International Students

Year	Undergrad	% Change	Graduate	% Change	Non-degree	% Change
2001/02	261,079	2.6	264,749	11.0	34,423	1.6
2002/03	260,103	-0.4	267,876	1.2	30,551	-11.2
2003/04	248,200	-4.6	274,310	2.4	20,659	-32.4
2004/05	239,212	-3.6	264,410	-3.6	28,418	37.6
2005/06	236,342	-1.2	259,717	-1.8	30,611	7.7
2006/07	238,050	0.7	264,288	1.8	38,986	27.4
2007/08	243,360	2.2	276,842	4.8	46,837	20.1
2008/09	269,874	10.9	283,329	2.3	51,812	10.6
2009/10	274,431	1.7	293,885	3.7	54,803	5.8
2010/11	291,439	6.2	296,574	0.9	59,233	8.1
2011/12	309,342	6.1	300,430	1.3	69,566	17.4
2012/13	339,993	9.9	311,204	3.6	73,528	5.7

### E. TOP U.S. INSTITUTIONS Hosting International Students, 2012/13

Rank	Institution	City	State	Total Int'l Students
1	University of Southern California	Los Angeles	CA	9,840
2	University of Illinois - Urbana-Champaign	Champaign	IL	9,804
3	Purdue University - Main Campus	West Lafayette	IN	9,509
4	New York University	New York	NY	9,362
5	Columbia University	New York	NY	8,797
6	University of California - Los Angeles	Los Angeles	CA	8,424
7	Northeastern University	Boston	MA	7,705
8	University of Michigan - Ann Arbor	Ann Arbor	MI	6,827
9	Michigan State University	East Lansing	MI	6,759
10	Penn State University - University Park	University Park	PA	6,693
11	Arizona State University	Tempe	AZ	6,645
12	Boston University	Boston	MA	6,615
13	Indiana University - Bloomington	Bloomington	IN	6,547
14	University of Washington	Seattle	WA	6,491
15	Ohio State University - Main Campus	Columbus	OH	6,478
16	University of Minnesota - Twin Cities	Minneapolis	MN	6,178
17	University of Florida	Gainesville	FL	5,961
18	SUNY University at Buffalo	Buffalo	NY	5,804
19	University of Pennsylvania	Philadelphia	PA	5,751
20	University of California - Berkeley	Berkeley	CA	5,632

### F. TOP U.S. STATES Hosting International Students

Rank	State	2011/12	2012/13	% Change
1	California	102,789	111,379	8.4
2	New York	82,436	88,250	7.1
3	Texas	61,511	62,923	2.3
4	Massachusetts	41,258	46,486	12.7
5	Illinois	35,920	39,132	8.9
6	Pennsylvania	33,398	37,280	11.6
7	Florida	32,567	32,746	0.5
8	Ohio	26,427	28,401	7.5
9	Michigan	25,551	26,930	5.4
10	Indiana	22,194	24,408	10.0

The Institute of International Education (IIE) has conducted an annual census of international students in the U.S. since its founding in 1919. Known as the *Open Doors Report* since 1954, and supported by the Bureau of Educational and Cultural Affairs of the U.S. Department of State since 1972, the report provides detailed data on student flows into and out of the U.S. Visit us online at: <http://www.iie.org/opendoors>.

## INTERNATIONAL STUDENTS IN THE U.S. (CONTINUED)

### G. TOP FIELDS OF STUDY of International Students

Field of Study	2011/12	2012/13	% of Total	% Change
Business and Management	166,733	178,984	21.8	7.3
Engineering	141,285	154,186	18.8	9.1
Math and Computer Science	71,364	77,560	9.5	8.7
Social Sciences	66,163	73,274	8.9	10.7
Physical and Life Sciences	66,007	69,152	8.4	4.8
Fine and Applied Arts	41,710	45,850	5.6	9.9
Intensive English	38,887	39,990	4.9	2.8
Health Professions	29,535	31,222	3.8	5.7
Humanities	16,294	17,121	2.1	5.1
Education	17,200	17,011	2.1	-1.1
Agriculture	9,750	10,463	1.3	7.3
Other Fields of Study	77,252	79,876	9.8	3.4
Undeclared	22,315	24,955	3.0	11.8

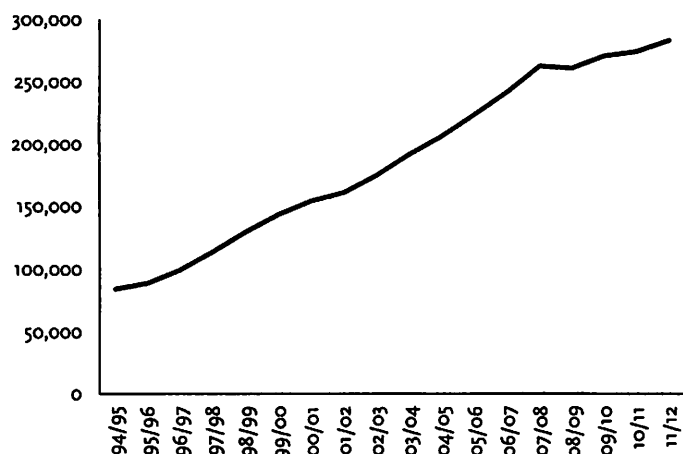
### H. PRIMARY SOURCE OF FUNDING of International Students

Primary Source of Funds	2011/12	2012/13	% of Total	% Change
Personal and Family	486,524	520,920	63.6	7.1
U.S. College or University	164,394	169,566	20.7	3.1
Foreign Gov't or University	44,344	57,898	7.1	30.6
U.S. Government	4,746	6,399	0.8	34.8
U.S. Private Sponsor	5,871	5,218	0.6	-11.1
Foreign Private Sponsor	9,670	9,229	1.1	-4.6
International Organization	1,869	1,412	0.2	-24.5
Current Employment	40,494	43,800	5.3	8.2
Other Sources	6,583	5,202	0.6	-21.0
<b>TOTAL</b>	<b>764,495</b>	<b>819,644</b>	<b>100.0</b>	<b>7.2</b>

## U.S. STUDENTS STUDYING ABROAD

### I. U.S. STUDY ABROAD TRENDS

283,332 U.S. students studied abroad for academic credit in 2011/12, an increase of 3.4% over the previous year. U.S. student participation in study abroad has more than tripled over the past two decades.



### J. LEADING DESTINATIONS of U.S. Study Abroad Students

- 15 of the top 25 destinations are outside Europe.

Rank	Place of Origin	2010/11	2011/12	% of Total	% Change
	<b>TOTAL</b>	<b>273,996</b>	<b>283,332</b>	<b>100</b>	<b>3.4</b>
1	United Kingdom	33,182	34,660	12.2	4.5
2	Italy	30,361	29,645	10.5	-2.4
3	Spain	25,965	26,480	9.3	2.0
4	France	17,019	17,168	6.1	0.9
5	China	14,596	14,887	5.3	2.0
6	Germany	9,018	9,370	3.3	3.9
7	Australia	9,736	9,324	3.3	-4.2
8	Costa Rica	7,230	7,900	2.8	9.3
9	Ireland	7,007	7,640	2.7	9.0
10	Japan	4,134	5,283	1.9	27.8
11	Argentina	4,589	4,763	1.7	3.8
12	India	4,345	4,593	1.6	5.7
13	South Africa	4,337	4,540	1.6	4.7
14	Brazil	3,485	4,060	1.4	16.5
15	Mexico	4,167	3,815	1.3	-8.4
16	Ecuador	3,107	3,572	1.3	15.0
17	Czech Republic	3,291	3,477	1.2	5.7
18	Israel	3,441	3,189	1.1	-7.3
19	Chile	3,280	3,064	1.1	-6.6
20	New Zealand	2,900	2,969	1.0	2.4
21	Denmark	2,478	2,876	1.0	16.1
22	Greece	3,428	2,701	1.0	-21.2
23	South Korea	2,487	2,695	1.0	8.4
24	Peru	2,448	2,680	0.9	9.5
25	Austria	2,736	2,657	0.9	-2.9

### K. TOP FIELDS OF STUDY of U.S. Study Abroad Students

Field of Study	2010/11		2011/12		% Change
	Total	%	Total	%	
Social Sciences	62,745	22.9	63,427	22.4	1.1
Business	56,169	20.5	58,091	20.5	3.4
Humanities	30,962	11.3	30,667	10.8	-1.0
Physical or Life Sciences	21,646	7.9	24,413	8.6	12.8
Fine or Applied Arts	22,468	8.2	22,138	7.8	-1.5
Health Sciences	14,522	5.3	16,138	5.7	11.1
Foreign Languages	15,344	5.6	14,890	5.3	-3.0
Education	11,508	4.2	11,539	4.1	0.3
Engineering	9,590	3.5	11,149	3.9	16.3
Math or Computer Sciences	4,932	1.8	4,861	1.7	-1.4
Agriculture	3,562	1.3	3,360	1.2	-5.7
Other Fields of Study	13,150	4.8	14,294	5.0	8.7
Undeclared	7,398	2.7	8,365	3.0	13.1
<b>Total</b>	<b>273,996</b>	<b>100.0</b>	<b>283,332</b>	<b>100.0</b>	<b>3.4</b>

### L. HOST REGIONS of U.S. Study Abroad Students

Host Region*	2010/11		2011/12		% Change
	Total	%	Total	%	
Sub-Saharan Africa	11,878	4.3	12,859	4.5	8.3
Asia	32,081	11.7	35,016	12.4	9.1
Europe	149,663	54.6	151,143	53.3	1.0
Oceania	13,156	4.8	12,755	4.5	-3.0
Middle East & North Africa	7,206	2.6	6,947	2.5	-3.6
Latin America & Caribbean	40,000	14.6	44,677	15.8	11.7
North America	1,426	0.5	1,639	0.6	14.9
Antarctica	37	0.0	42	0.0	13.5
Multiple	18,549	6.8	18,254	6.4	-1.6
<b>TOTAL</b>	<b>273,996</b>	<b>100.0</b>	<b>283,332</b>	<b>100.0</b>	<b>3.4</b>

\* Cyprus and Turkey are included in Europe; Mexico is included in Latin America

### M. PARTICIPATION RATE of U.S. Students in Study Abroad, 2011/12

	U.S. Study Abroad Total	U.S. Higher Education Total	%
All US students studying abroad in 2011/12	283,332	19,626,742*	1.4
All US undergraduates who study abroad during their degree program	245,649	2,624,996**	9.4
US bachelors students who study abroad during their degree program	238,566	1,680,530**	14.2

\*Total enrollment of U.S. students (excluding international students) in higher education.

\*\* Undergraduate degrees awarded to U.S. students (excluding international students).

### N. DURATION of U.S. Study Abroad

	2010/11 %	2011/12 %
Short-term (summer or eight weeks or less)	58.1	58.9
Mid-length (one or two quarters or one semester)	38.0	37.9
Long-term (academic or calendar year)	3.9	3.2