

Be Ready, Be Safe, Be Responsible

Manual

XI. PART B RIGHT OF WAY-YIELD EXERCISES

Right Of Way

Lessons and Hints to Work With Your New Teen Driver


Part 11



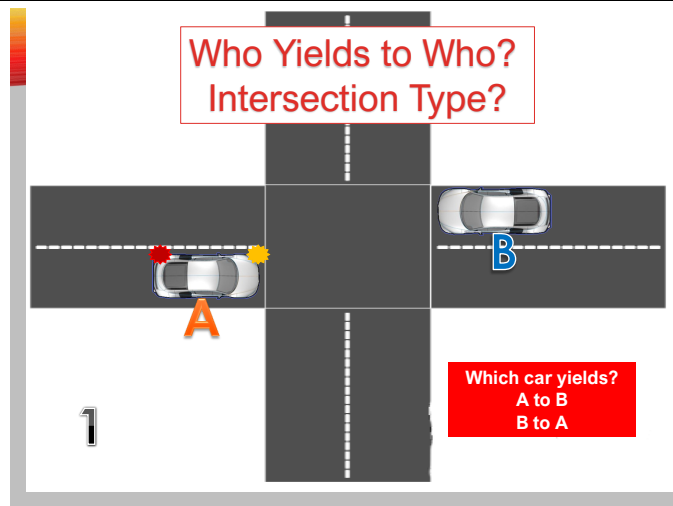
Be Ready, Be Safe, Be Responsible

XI. PART B RIGHT OF WAY-YIELD EXERCISES

Right Of Way
Lessons and Hints to Work With Your New Teen Driver
Part 11



Who Yields to Who?
Intersection Type?



1

Which car yields?
A to B
B to A

1 Who Yields to Who? Intersection Type?
Which car yields if they reach at about the same time?
A to B
B to A
Answer:
Uncontrolled 4-way
A to B

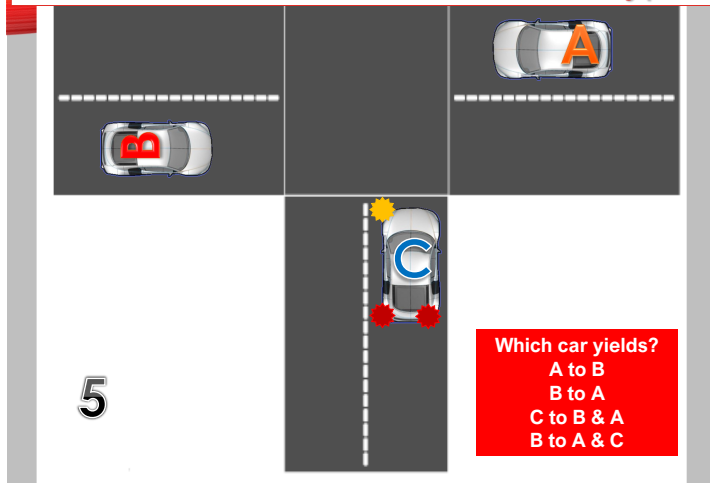
1

WHY?

- A. LAST- YIELDS TO FIRST
- B. LEFT- YIELDS TO RIGHT
- C. STOPPED OR SLOW- YIELDS TO MOVING
- D. SECONDARY YIELDS TO MAIN
- E. TURNING YIELDS TO ONCOMING

1 Answer:
Uncontrolled intersection
A to B
WHY?
E. TURNING YIELDS TO ONCOMING

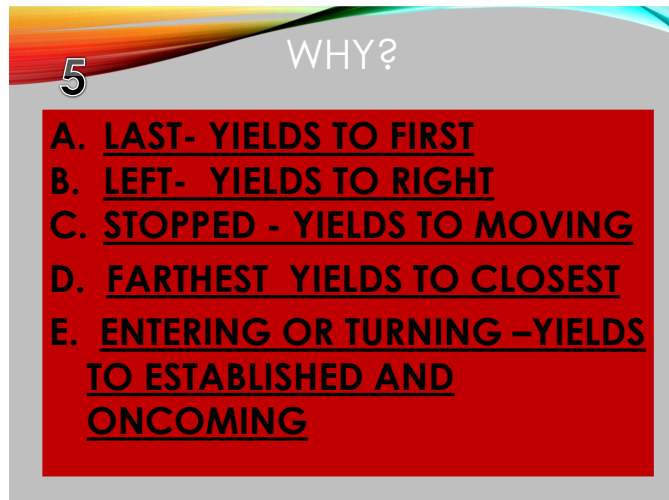
Who Yields to Who? Intersection Type?



5
 Who Yields to Who?
 Intersection Type?

Which car yields?
 A to B
 B to A
 C to B & A

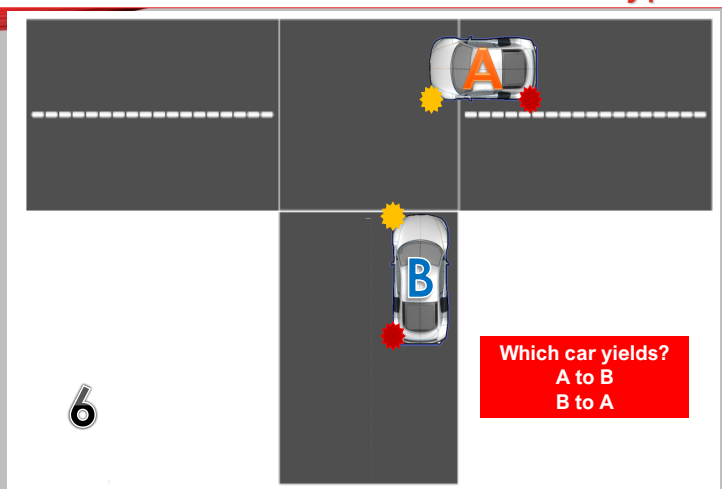
Answer:
 T-intersection, uncontrolled
 C to B & A



5 Answer:
 T-intersection, uncontrolled
 C to B & A

WHY?
 E. ENTERING OR TURNING –YIELDS TO ESTABLISHED AND ONCOMING
 C. STOPPED - YIELDS TO MOVING

Who Yields to Who? Intersection Type?



6 Who Yields to Who? Intersection Type?

Which car yields?
 A to B
 B to A
 C to B & A
 Answer:
 Uncontrolled
 B yields to A

6 WHY?

- A. LAST- YIELDS TO FIRST
- B. LEFT- YIELDS TO RIGHT
- C. STOPPED OR SLOW- YIELDS TO MOVING
- D. SECONDARY, SIDESTREET, ALLEY YIELDS TO MAIN
- E. ENTERING –YIELDS TO ESTABLISHED

- 6 Answer:
- Uncontrolled
 - B yields to A

WHY?

- LEFT- YIELDS TO RIGHT
- STOPPED OR SLOW- YIELDS TO MOVING
- D. SECONDARY, SIDESTREET, ALLEY YIELDS TO MAIN
- E. ENTERING –YIELDS TO ESTABLISHED

7 Who Yields to Who? Intersection Type?

Which car yields?
 A to B & C
 B to A & C
 C to A
 C to A & B
 B to A

7 Who Yields to Who? Intersection Type?

Which car yields?

- A to B & C
- B to A
- C to A
- C to A & B
- B to A

Answer:

- Uncontrolled T-intersection
- C to A and B to A

8 Who Yields to Who? Intersection Type?

Which car yields?
 A to B
 B to A

8 Who Yields to Who? Intersection Type?

Which car yields?

- A to B
- B to A
- C to B & A

Answer:

- Uncontrolled T-intersection
- A yields to B

8 WHY?

- A. AVOID COLLISION
- B. LEFT- YIELDS TO RIGHT
- C. STOPPED OR SLOW- YIELDS TO MOVING
- D. SECONDARY YIELDS TO MAIN
- E. ENTERING –YIELDS TO ESTABLISHED
- F. TURNING YIELDS TO ONCOMING

- 8 Answer:
- Uncontrolled T-intersection
 - A yields to B

Why?

- AVOID COLLISION

Car A doesn't have enough room to turn in, so driver yields to Car B to allow space to enter the sideroad.

9

Who Yields to Who?
Intersection Type?

Car A is 1st at intersection
Car B will reach it 2nd
and Car C will get there last

Which car yields?
A to B
B to A
A TO C
C TO B
C to B and A

9 Who Yields to Who? Intersection Type?
, cars are travelling at 15 mph
Car A is 1st at intersection
Car B and Car C reach 2nd at about the same time
Which car yields?

- A to B
 - B to A
 - A TO C
 - C TO B
 - B to C
- Answer:
- Uncontrolled 4 way intersection
 - B to C and A

9 WHY?

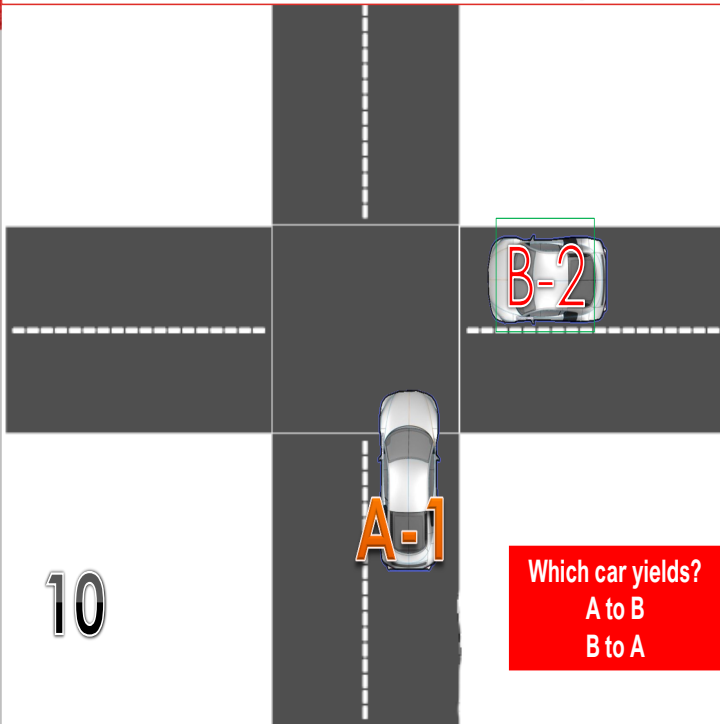
- A. LAST- YIELDS TO FIRST
- B. GAP-TIMING
- C. STOPPED OR SLOW- YIELDS TO MOVING
- D. SECONDARY YIELDS TO MAIN
- E. ENTERING –YIELDS TO ESTABLISHED
- F. LAST- YIELDS TO FIRST
- G. LEFT- YIELDS TO RIGHT

- 9 Answer:
- Uncontrolled 4 way intersection
 - B to C and A

Why?

B. Gap –Timing
If Car C is far enough away, not speeding, and Cars A & B don't change speed.
F. LAST- YIELDS TO FIRST
Because of the timing of Car C reaching the intersection last, and not trying to beat the other two there.
G. LEFT- YIELDS TO RIGHT

Who Yields to Who? Intersection Type?



10

A arrives 1st, B arrives 2nd

Who Yields to Who? Intersection Type?

Which car yields?

A to B

B to A

Answer:

- Uncontrolled 4-way intersection
- B yields to A

10

WHY?

- A. LAST- YIELDS TO FIRST
- B. LEFT- YIELDS TO RIGHT
- C. STOPPED OR SLOW- YIELDS TO MOVING
- D. SECONDARY YIELDS TO MAIN
- E. ENTERING –YIELDS TO ESTABLISHED

10 Answer:

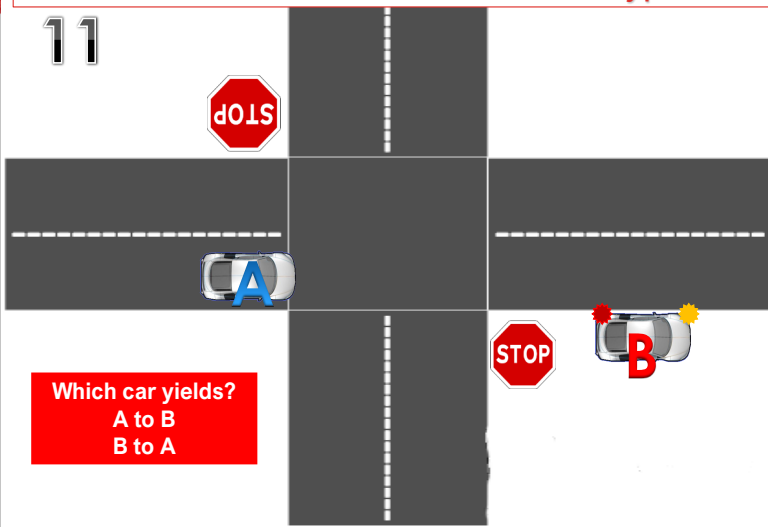
- Uncontrolled 4-way intersection
- B yields to A

Why?

- LAST- YIELDS TO FIRST
- ENTERING –YIELDS TO ESTABLISHED

Who Yields to Who? Intersection Type?

11



11 Who Yields to Who? Intersection Type?

Answer:

- Controlled 4-way int. 2-way STOP
- B yields to A

11

WHY?

- A. LAST- YIELDS TO FIRST
- B. LEFT- YIELDS TO RIGHT
- C. STOPPED OR SLOW- YIELDS TO MOVING
- D. SECONDARY YIELDS TO MAIN
- E. ENTERING –YIELDS TO ESTABLISHED

11 Answer:

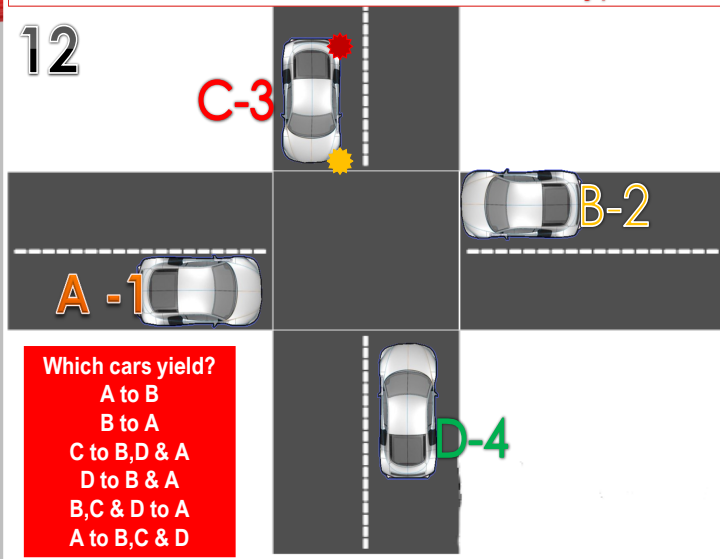
- Controlled 4-way int. 2-way STOP
- B yields to A

Why?

- STOPPED OR SLOW- YIELDS TO MOVING
- ENTERING –YIELDS TO ESTABLISHED

Who Yields to Who? Intersection Type?

12



12 Who Yields to Who? Intersection Type?

Cars arrive-Car A-1 1st, B-2-2nd, C-3 3rd, D-4 last

Which cars yield?

- A to B
- B to A
- C to B,D & A
- D to B & A
- B,C & D to A

Answer:

- 4-way uncontrolled
- C to B,D & A
- B,C & D to A
- D to B & A

12

WHY?

- A. LAST- YIELDS TO FIRST
- B. LEFT- YIELDS TO RIGHT
- C. STOPPED OR SLOW- YIELDS TO MOVING
- D. ORDER OF ARRIVAL
- E. ENTERING –YIELDS TO ESTABLISHED
- F. TURNING YIELDS TO ONCOMING

12 Answer:

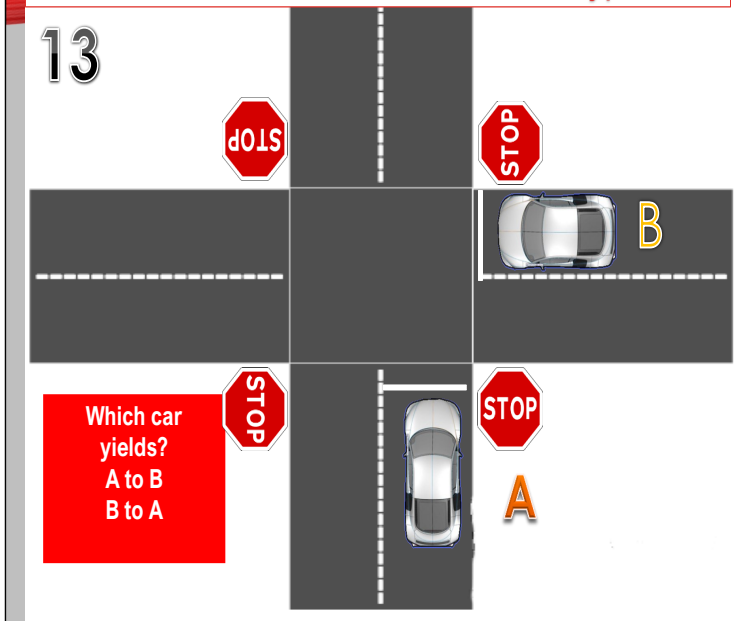
- 4-way uncontrolled
- C to B,D & A
- B,C & D to A
- D to B & A

Why?

- LAST- YIELDS TO FIRST
- D. ORDER OF ARRIVAL
- F. TURNING YIELDS TO ONCOMING

Who Yields to Who? Intersection Type?

13



13 Who Yields to Who? Intersection Type?

Cars arrive at about the same time

Which car yields?

- A to B
- B to A

Answer:

- 4-way STOP Intersection
- A TO B

13

WHY?

- A. LAST- YIELDS TO FIRST
- B. LEFT- YIELDS TO RIGHT
- C. STOPPED OR SLOW- YIELDS TO MOVING
- D. SECONDARY YIELDS TO MAIN
- E. ORDER OF ARRIVAL

13 Answer:

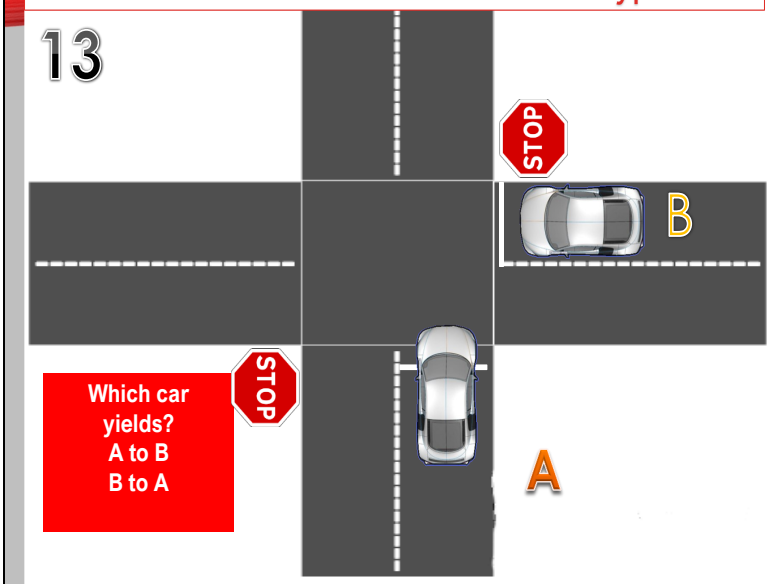
- 4-way STOP Intersection
- A TO B

Why?

B. LEFT- YIELDS TO RIGHT

Who Yields to Who? Intersection Type?

13



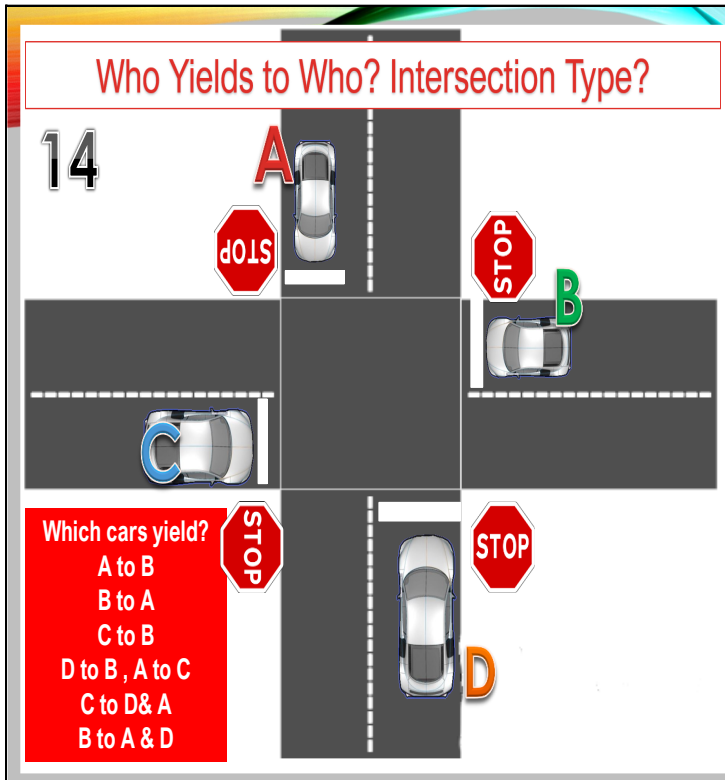
13 Who Yields to Who? Intersection Type?

Cars arrive at about the same time
Which car yields?

- A to B
- B to A

Answer:

- 2-way STOP Intersection
- B to a



14 Who Yields to Who? Intersection Type?

Cars arrive at about the same time. All are crossing.

Which cars yield?

- A to B
- B to A
- C to B
- D to B , A to C

Answer:

- 4-way stop intersection
- GO BY WHOEVER GRANTS RIGHT OF WAY FIRST. FOR EXAMPLE
 - IF A GRANTS TO C, D MAY GRANT TO B, A & D MAY THEN CROSS AFTER THE INTERSECTION CLEARS, LIKEWISE D TO B
 - D TO B, A TO C
 - B TO A, C TO D

14 WHY?

- A. LAST- YIELDS TO FIRST**
- B. LEFT- YIELDS TO RIGHT**
- C. STOPPED OR SLOW- YIELDS TO MOVING**
- D. SECONDARY YIELDS TO MAIN**
- E. ENTERING –YIELDS TO ESTABLISHED**

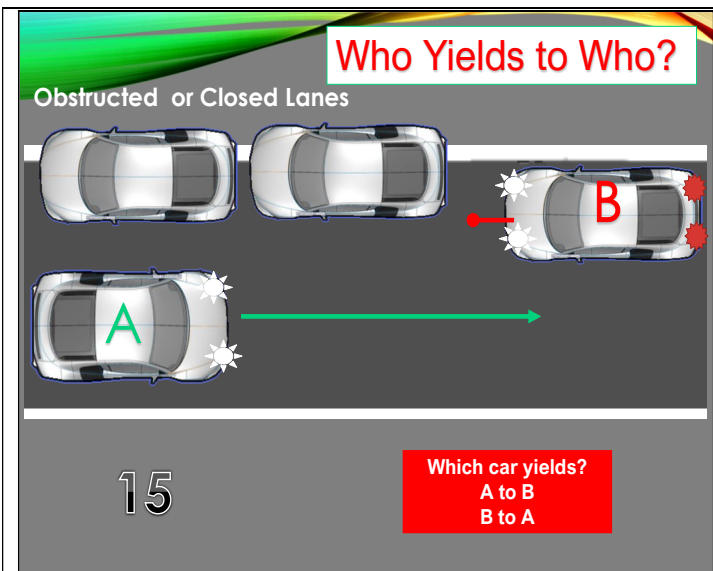
14 Answer:

- 4-way stop intersection
- GO BY WHOEVER GRANTS RIGHT OF WAY FIRST. FOR EXAMPLE
 - IF A GRANTS TO C, D MAY GRANT TO B, A & D MAY THEN CROSS AFTER THE INTERSECTION CLEARS, LIKEWISE D TO B
 - D TO B, A TO C
 - B TO A, C TO D

WHY?

B. LEFT- YIELDS TO RIGHT

Also, courtesy



15 Who Yields to Who?

Answer: B Yields to A



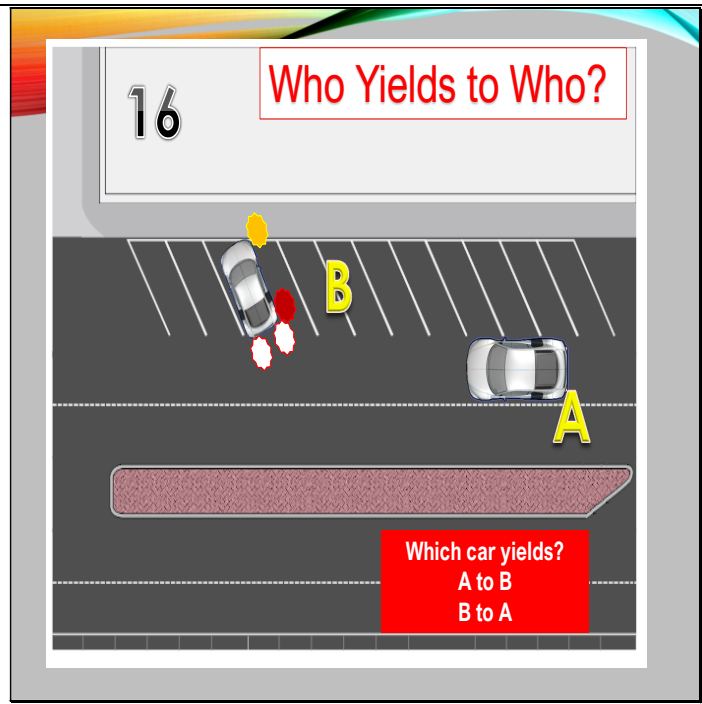
15 Answer: B Yields to A

Why?

C. BLOCKED- YIELDS TO MOVING

Obstructed or Closed Lanes

When a lane is closed or obstructed, the driver in that closed lane shall yield the right of way to oncoming vehicles



16 Who Yields to Who?

Which car yields?

A to B

B to A

Answer: B to A

16

WHY?

- A. LAST- YIELDS TO FIRST
- B. LEFT- YIELDS TO RIGHT
- C. STATIONARY OR PARKED YIELDS TO MOVING
- D. SECONDARY YIELDS TO MAIN
- E. ENTERING –YIELDS TO ESTABLISHED

16 Answer:

- B to A

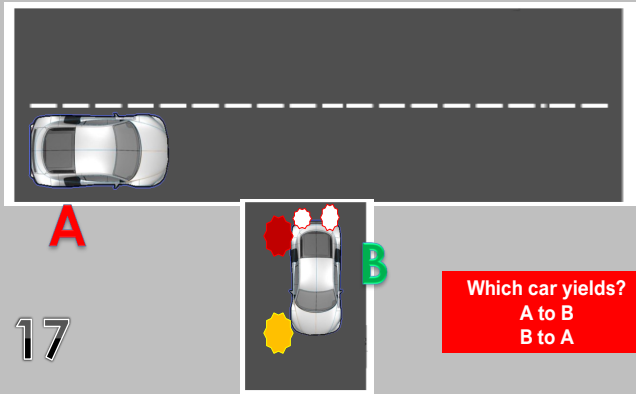
Why?

C. STATIONARY OR PARKED YIELDS TO MOVING

E. ENTERING –YIELDS TO ESTABLISHED

The driver entering a roadway from a parked position, standing position, parking lot, shopping area, alley, and private drive shall yield to cars approaching on the roadway and to pedestrians on the sidewalk.

Who Yields to Who?



17

17

Who Yields to Who?

Which car yields?

A to B

B to A

Answer:

B to A

17

WHY?

- A. LAST- YIELDS TO FIRST
- B. LEFT- YIELDS TO RIGHT
- C. STOPPED OR SLOW- YIELDS TO MOVING
- D. SECONDARY YIELDS TO MAIN
- E. ENTERING –YIELDS TO ESTABLISHED

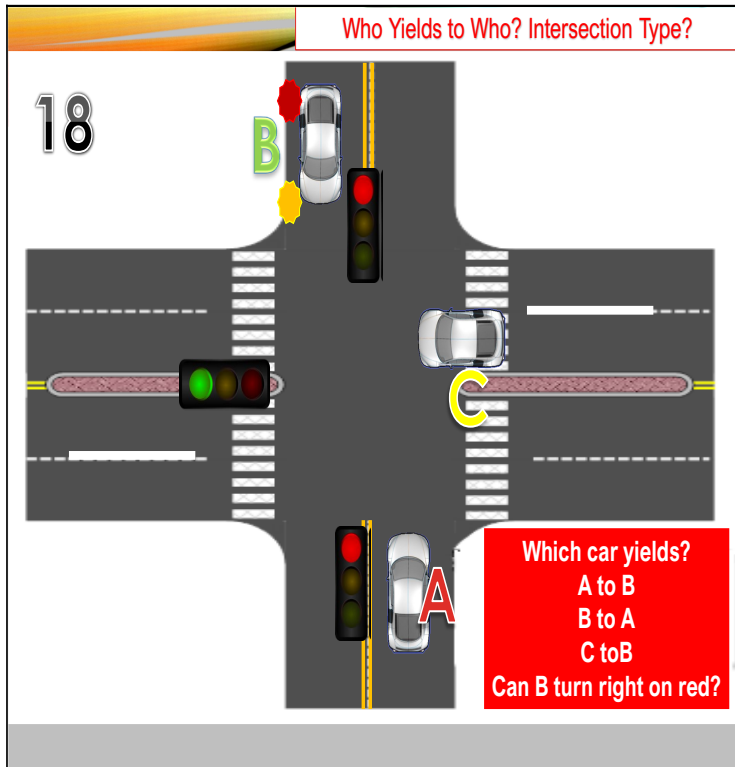
17 Answer:

B to A

Why?

E. ENTERING –YIELDS TO ESTABLISHED

The driver entering a roadway from a parked position, standing position, parking lot, shopping area, alley, and private drive shall yield to cars approaching on the roadway and to pedestrians on the sidewalk.



18 Who Yields to Who? Intersection Type?

Which car yields?

A to B

B to A

C to B

Can C turn right on red?

Answers:

- 4-way signalized multiple lane intersection
- A to C
- C may turn right-on red.

18 WHY?

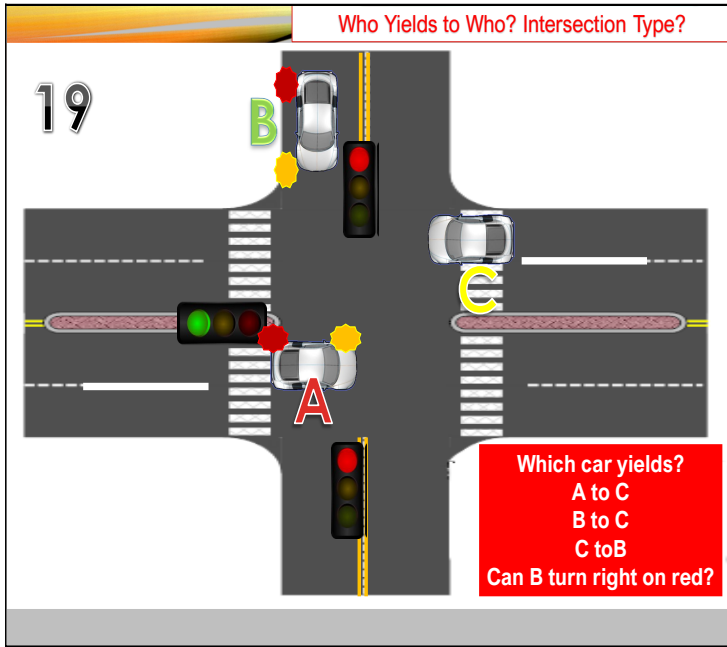
A. LAST- YIELDS TO FIRST
B. LEFT- YIELDS TO RIGHT
C. STOPPED OR SLOW- YIELDS TO MOVING
D. SECONDARY YIELDS TO MAIN
E. ENTERING –YIELDS TO ESTABLISHED
F. RULE OF LAW

18 Answers:

- 4-way signalized multiple lane intersection
- A to C
- C may turn right-on red.

Why?

- F. RULE OF LAW
- C may turn on red- no sign prohibiting. MUST turn into nearest open lane and not encroach on Car B.



19 Who Yields to Who? Intersection Type?

Which car yields?

A to B

B to A

C to B

Can C turn right on red?

Answers:

- 4-way signalized multiple lane intersection
- A to C & B to C
- C may not turn right-on red.

19 WHY?

A. LAST- YIELDS TO FIRST

B. LEFT- YIELDS TO RIGHT

C. STOPPED OR SLOW- YIELDS TO MOVING

D. TURNING YIELDS TO STRAIGHT

E. ENTERING –YIELDS TO ESTABLISHED

F. RULE OF LAW

19 Answers:

Answers:

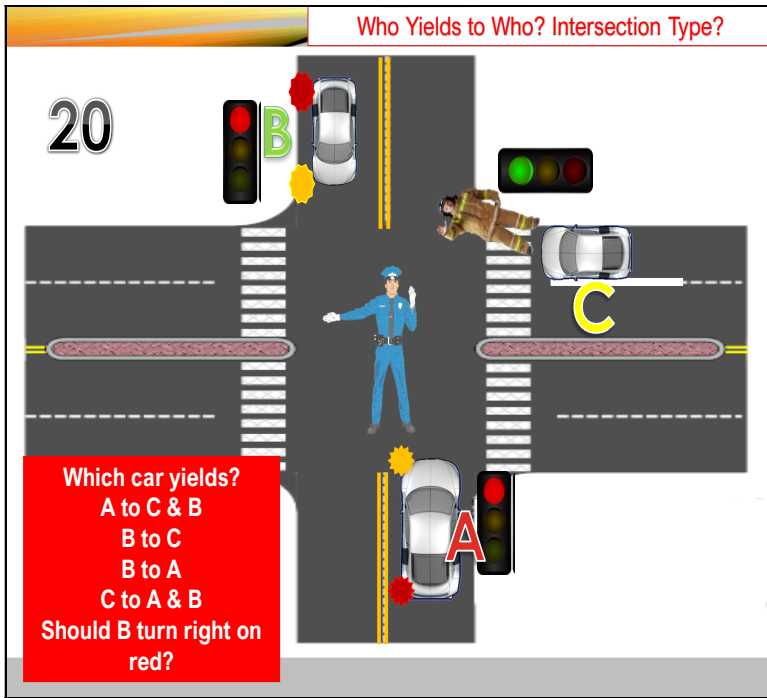
- 4-way signalized multiple lane intersection
- A to C & B to C
- C may not turn right-on red.

Why?

- D. TURNING YIELDS TO STRAIGHT, ONCOMING
- E. ENTERING –YIELDS TO ESTABLISHED
- C. STOPPED OR SLOW- YIELDS TO MOVING

Car C cannot turn on red because of crash possibility with Car B

Common Law requires us to take due care to avoid crashes.



20 Who Yields to Who?

Intersection Type?

Which car yields?

A to C & B

B to C

B to A

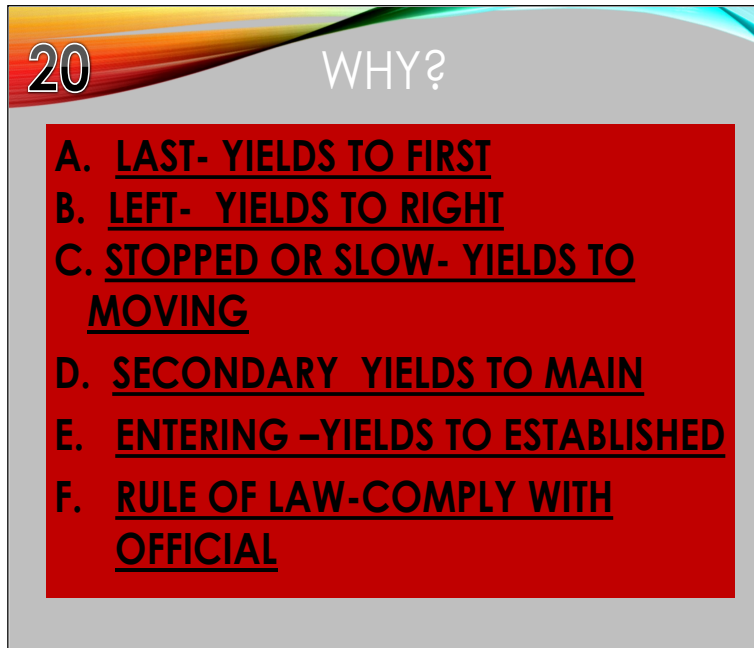
C to A

Should B turn right on red?

Answers:

4-way signalized multiple lane intersection under official control
 C to A & B –C is stopped by an official, must stop and stay stopped until released regardless of signal

B should not turn on red, unless permitted by traffic official



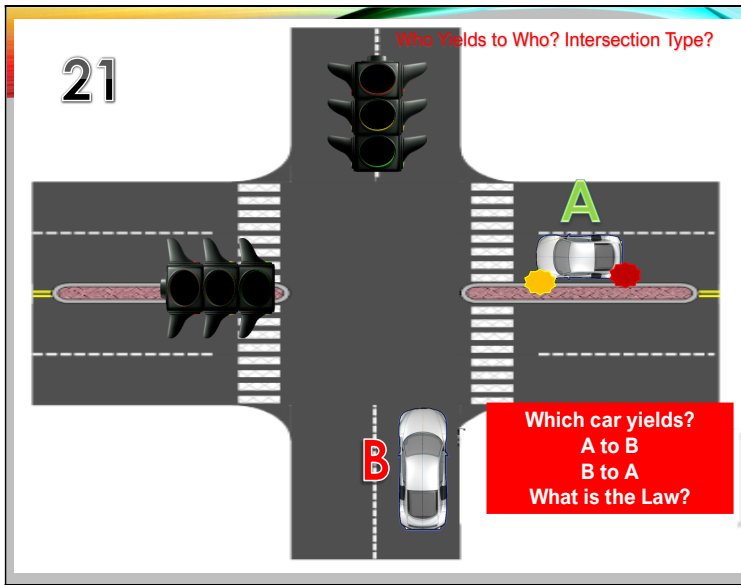
20 Answers:

- 4-way signalized multiple lane intersection under official control
- C to A & B –C is stopped by an official, must stop and stay stopped until released regardless of signal
- B should not turn on red, unless permitted by traffic official

Why?

F. RULE OF LAW-COMPLY WITH OFFICIAL

Drivers shall willfully comply with any lawful order or direction of the authorized persons.



21 Who Yields to Who? Intersection Type?

Which car yields?

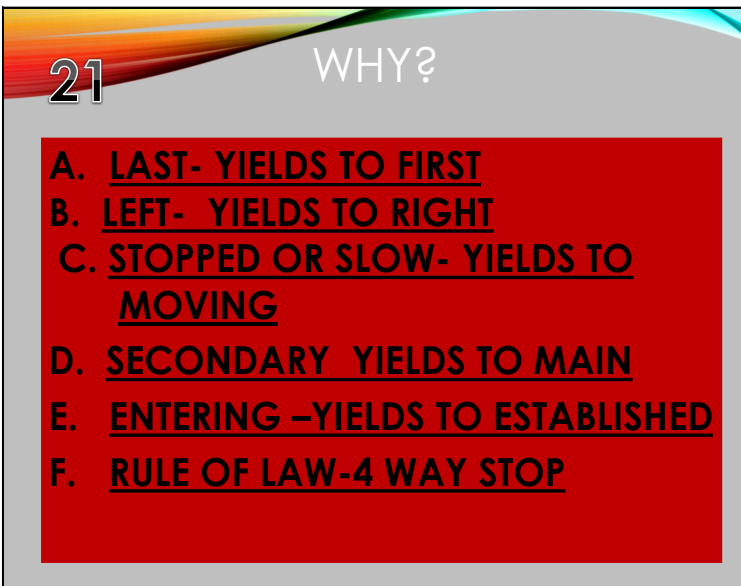
A to B

B to A

What is the law?

Answers:

- 4-way multi-lane intersection. Signals are out
- A to B
- All vehicles must come to complete stop. Treat intersection as a 4-way STOP.

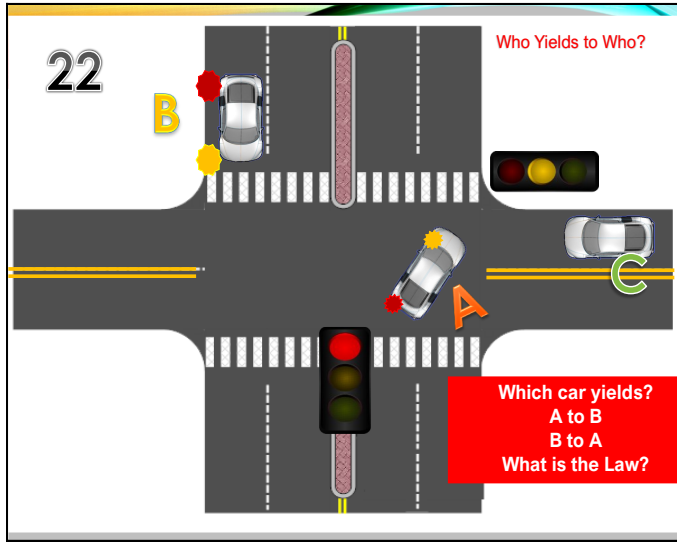


21 Answers:

- 4-way multi-lane intersection. Signals are out
- A to B
- All vehicles must come to complete stop. Treat intersection as a 4-way STOP.

Why?

RULE OF LAW-4 WAY STOP



22 Who Yields to Who? Intersection Type?

Which car yields?

A to B

B to A

What is the law?

Answers:

- 4-way signalized multiple lane intersection
- A to C
- C may turn right-on red.

22 Answers:

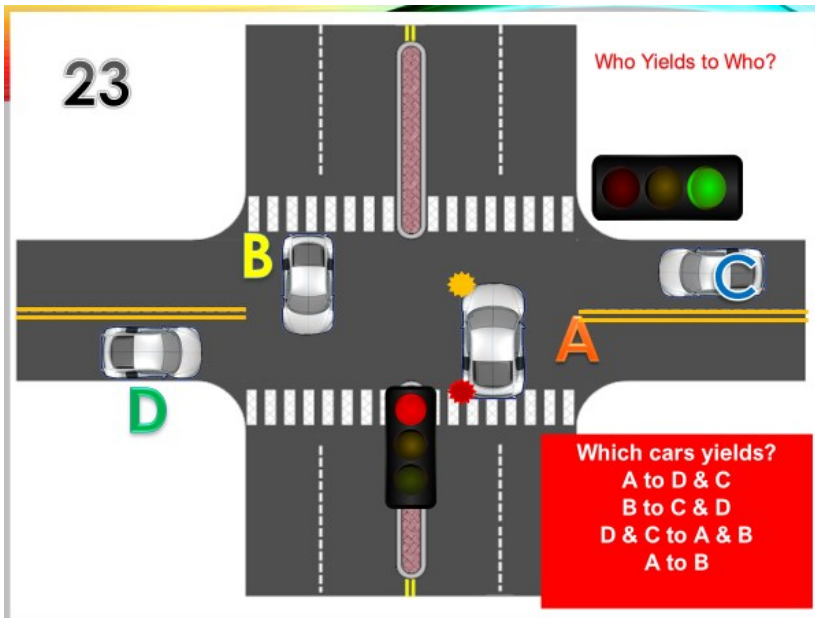
- 4-way signalized multiple lane intersection
- A to C
- C may turn right-on red.

Why?

- F. RULE OF LAW
- C may turn on red- no sign prohibiting. MUST turn into nearest open lane and not encroach on Car B.

22 WHY?

A. LAST- YIELDS TO FIRST
B. LEFT- YIELDS TO RIGHT
C. STOPPED OR SLOW- YIELDS TO MOVING
D. SECONDARY YIELDS TO MAIN
E. ENTERING –YIELDS TO ESTABLISHED
F. RULE OF LAW



23 Who Yields to Who?

Which cars yields?

- A to D & C
- B to C & D
- D & C to A & B
- A to B

Answer:

- D & C to A & B
- A to B

23 WHY?

- A. LAST- YIELDS TO FIRST
- B. LEFT- YIELDS TO RIGHT
- C. STOPPED OR SLOW- YIELDS TO MOVING
- D. SECONDARY YIELDS TO MAIN
- E. ENTERING –YIELDS TO ESTABLISHED
- F. LEFT TURN YIELDS TO ONCOMING
- G. ALLOW VEHICLES TO SAFELY CLEAR INTERSECTION

23 Answers:

Answer:

- D & C to A & B
- A to B

Why?

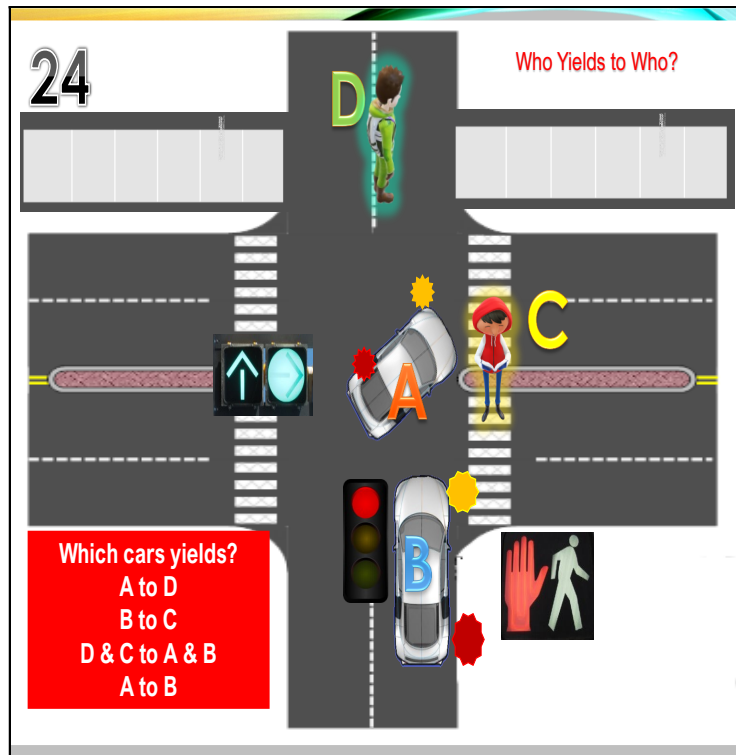
G. ALLOW VEHICLES TO SAFELY CLEAR INTERSECTION

Vehicles planning to enter an intersection MUST yield regardless of signal to allow established vehicles the chance to clear the intersection safely. This prevents collision and prevents the intersection from being blocked

E. ENTERING –YIELDS TO ESTABLISHED

F. LEFT TURN YIELDS TO ONCOMING

G.ALLOW VEHICLES TO SAFELY CLEAR INTERSECTION



24 Who Yields to Who?

Which cars yields?

A to D

B to C

D & C to A & B

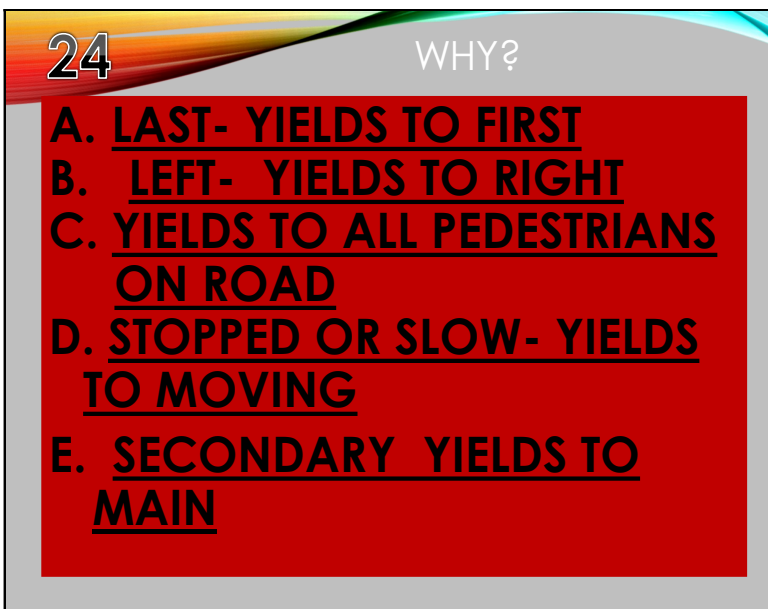
A to B

Answers:

A to D

B to C

The driver of a vehicle must yield to a pedestrian crossing the road at a crosswalk—marked or unmarked. Pedestrians crossing the roadway other than at a crosswalk must yield to vehicles on the roadway. Blind persons with a white cane or a guide dog are an exception to the rule.



24

Answers:

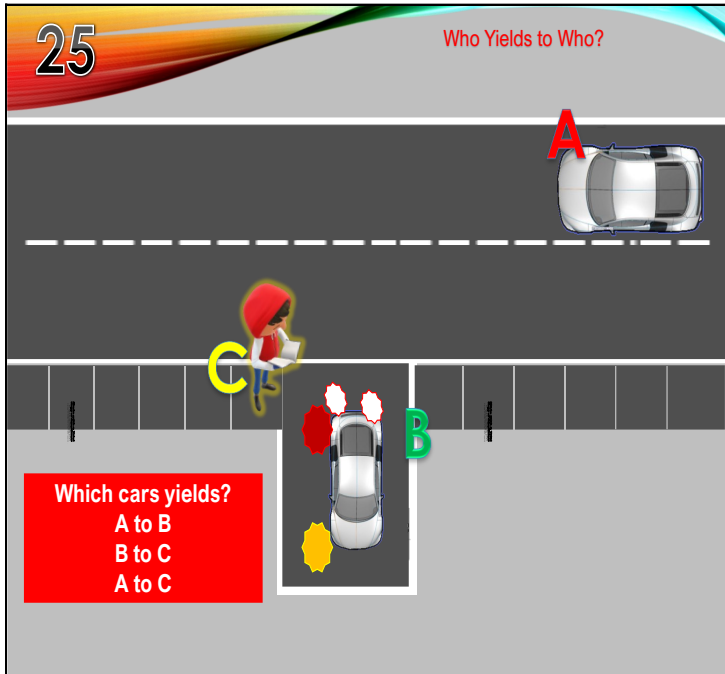
A to D

B to C

Why?

C. YIELDS TO ALL PEDESTRIANS ON ROAD

The driver of a vehicle must yield to a pedestrian crossing the road at a crosswalk—marked or unmarked. Pedestrians crossing the roadway other than at a crosswalk must yield to vehicles on the roadway. Blind persons with a white cane or a guide dog are an exception to the rule.



25 Who Yields to Who?

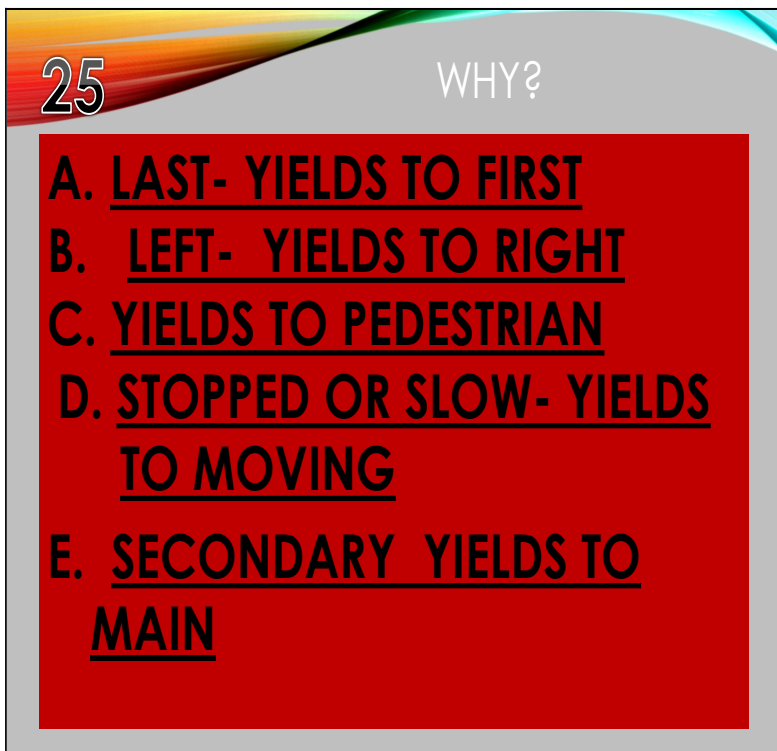
Which cars yields?

- A to B
- B to C
- A to C

Answer:

B to C

The driver entering a roadway from a parked position, standing position, parking lot, shopping area, alley, and private drive shall yield to cars approaching on the roadway and to pedestrians on the sidewalk.



25

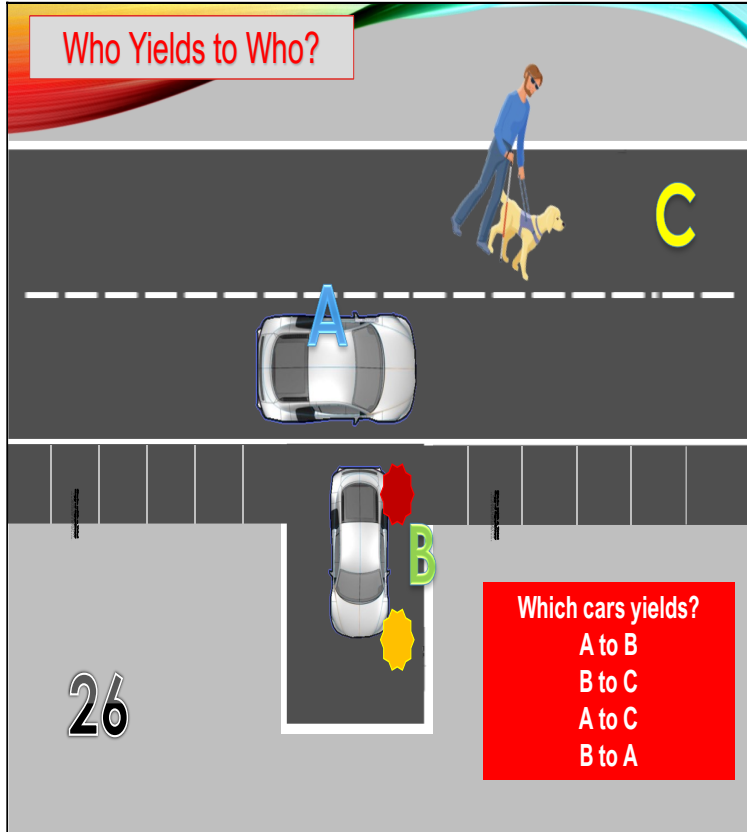
Answer:

B to C

Why?

C. YIELDS TO PEDESTRIAN

The driver entering a roadway from a parked position, standing position, parking lot, shopping area, alley, and private drive shall yield to cars approaching on the roadway and to pedestrians on the sidewalk.



26 Who Yields to Who?

Which cars yields?

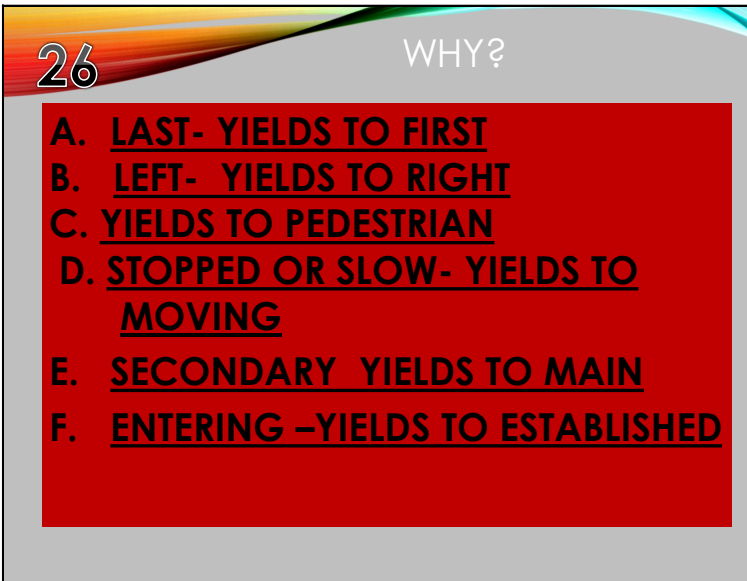
- A to B
- B to C
- A to C
- B to A

Answer:

- A to C
- B to A
- B to C

C. YIELDS TO ALL PEDESTRIANS ON ROAD

The driver of a vehicle must yield to a pedestrian crossing the road at a crosswalk—marked or unmarked. Pedestrians crossing the roadway other than at a crosswalk must yield to vehicles on the roadway. Blind persons with a white cane or a guide dog are an exception to the rule.



26

Answer:

- B to C
- B to A

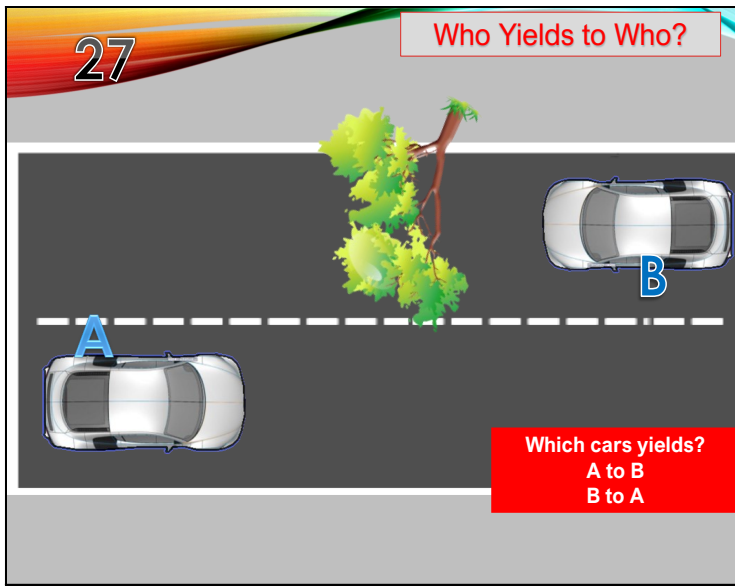
Why?

C. YIELDS TO PEDESTRIAN

The driver entering a roadway from a parked position, standing position, parking lot, shopping area, alley, and private drive shall yield to cars approaching on the roadway and to pedestrians on the sidewalk.

F. ENTERING -YIELDS TO ESTABLISHED

The driver entering a roadway from a parked position, standing position, parking lot, shopping area, alley, and private drive shall yield to cars approaching on the roadway and to pedestrians on the sidewalk.



27 Who Yields to Who?

Which cars yields?

A to B

B to C

A to C

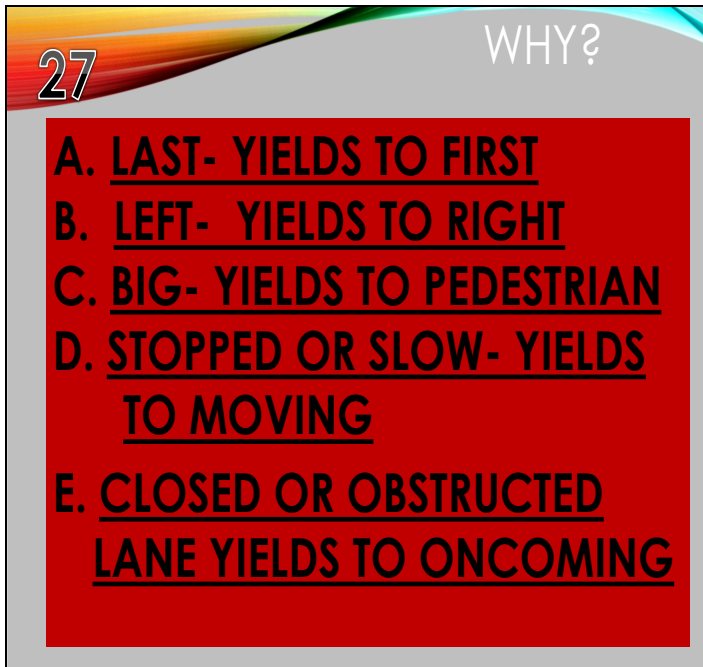
B to A

Answer:

B to A

When a lane ends or there is an object in the lane, the driver of a vehicle using this lane shall

yield the right-of-way to oncoming vehicles or following vehicles in the adjacent lane.



27

Answer:

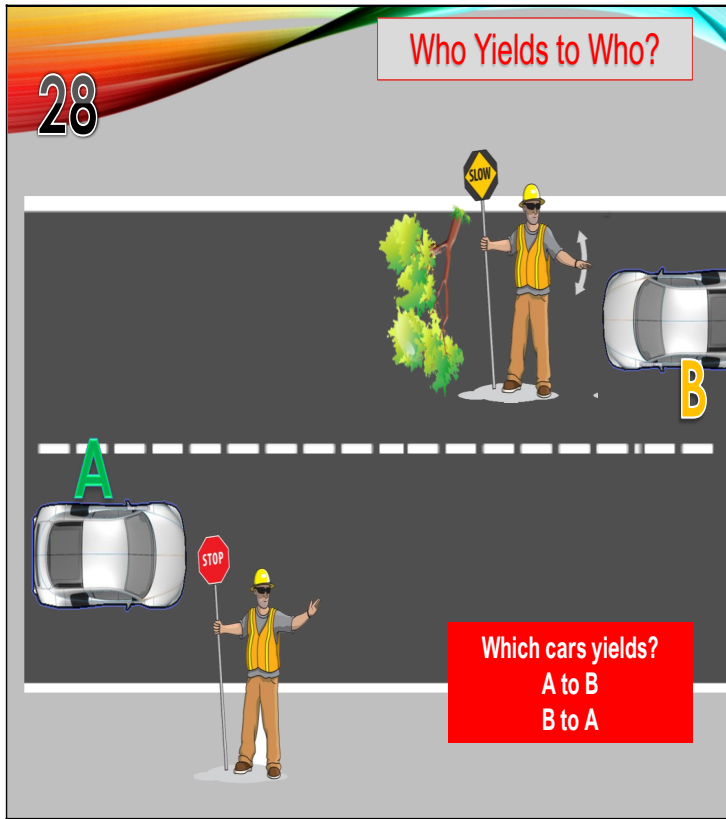
B to A

WHY?

E. CLOSED OR OBSTRUCTED LANE YIELDS TO ONCOMING

When a lane ends or there is an object in the lane, the driver of a vehicle using this lane shall

yield the right-of-way to oncoming vehicles or following vehicles in the adjacent lane.



28 Who Yields to Who?

Which cars yields?

A to B

B to A

Answer: A to B

Authorized persons who may direct and control traffic are:

- Uniformed police officer, sheriff, or constable.
- In certain emergencies, a railroad or street railway police officer; or any appropriately attired person, including an agent or employee of the funeral director during a funeral.
- Drivers shall willfully comply with any lawful order or direction of the authorized persons.

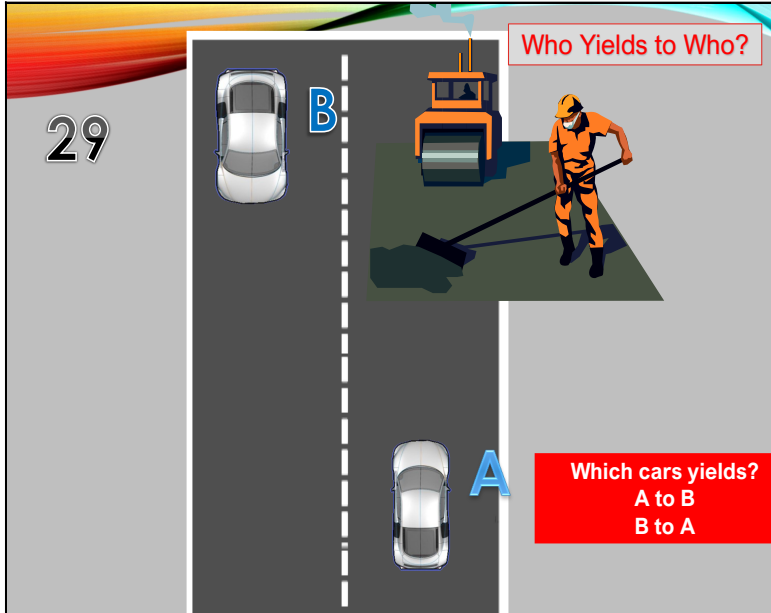


Answer:

A to B

Why?

F. RULE OF LAW-COMPLY WITH OFFICIAL
 Drivers shall willfully comply with any lawful order or direction of the authorized persons.



29 Who Yields to Who?

Which cars yields?

A to B

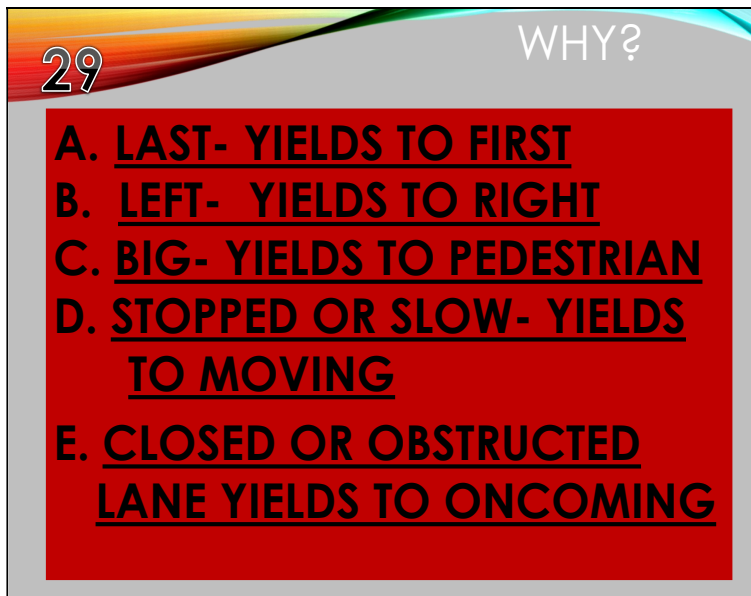
B to A

Answer:

A to B

When a lane ends or there is a object in the lane, the driver of a vehicle using this lane shall yields the right-of-way to oncoming vehicles or following vehicles in the adjacent lane.

The duties of the driver when encountering person(s) working on the highway are to yield the right-of-way to any authorized vehicle or pedestrian engaged in work on the designated section of the highway.



27

Answer:

A to B

WHY?

E. CLOSED OR OBSTRUCTED LANE YIELDS TO ONCOMING

When a lane ends or there is an object in the lane, the driver of a vehicle using this lane shall yield the right-of-way to oncoming vehicles or following vehicles in the adjacent lane.

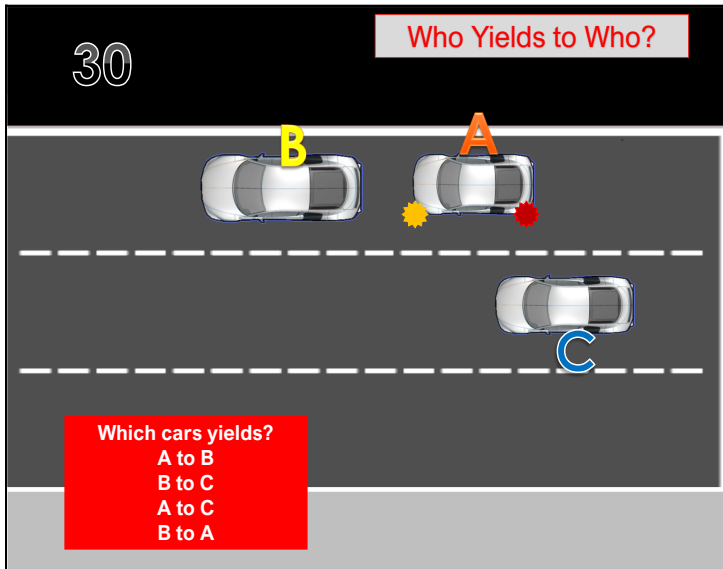
30 Who Yields to Who?

Which cars yields?

- A to B
- B to C
- A to C
- B to A

Answer:

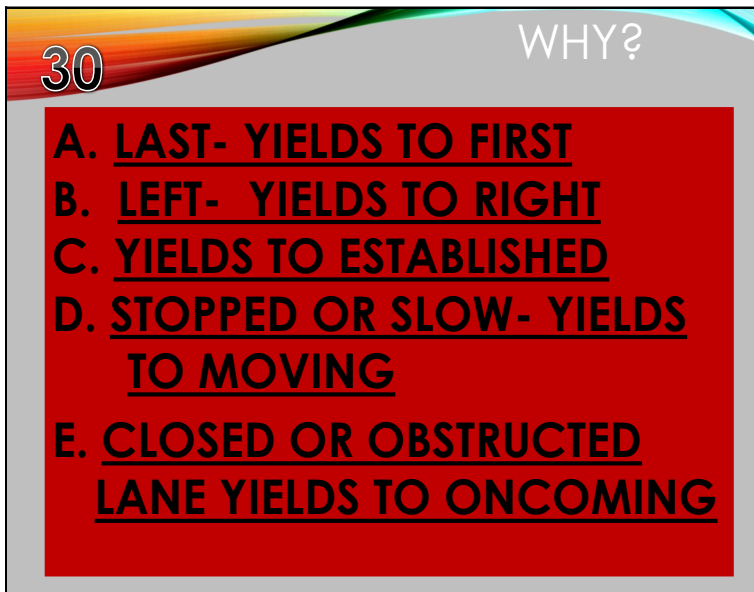
A to C



30

Answer:

A to C

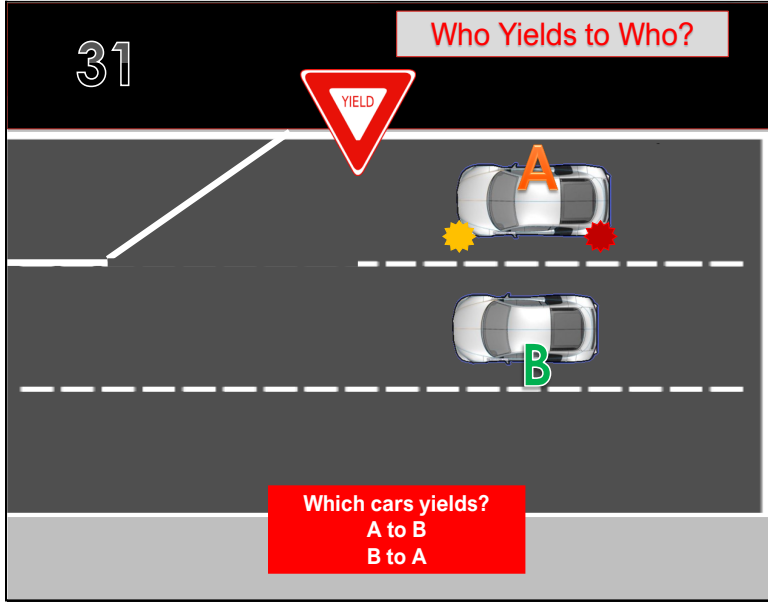


WHY?

- C. YIELDS TO ESTABLISHED
- E. CLOSED OR OBSTRUCTED LANE YIELDS TO ONCOMING

When a lane ends or there is an object in the lane, the driver of a vehicle using this lane shall

yield the right-of-way to oncoming vehicles or following vehicles in the adjacent lane.



31 Who Yields to Who?

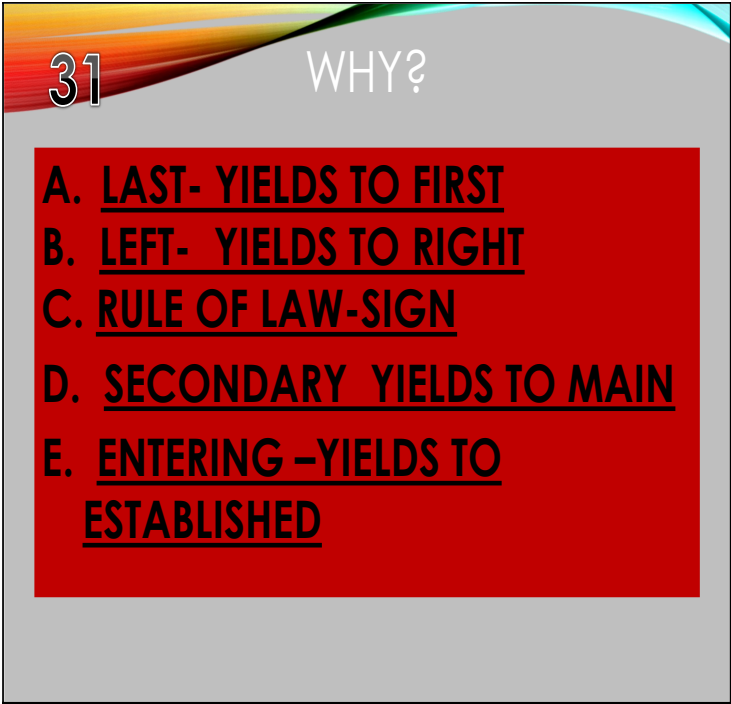
Which cars yields?

A to B

B to A

Answer:

A to B



31

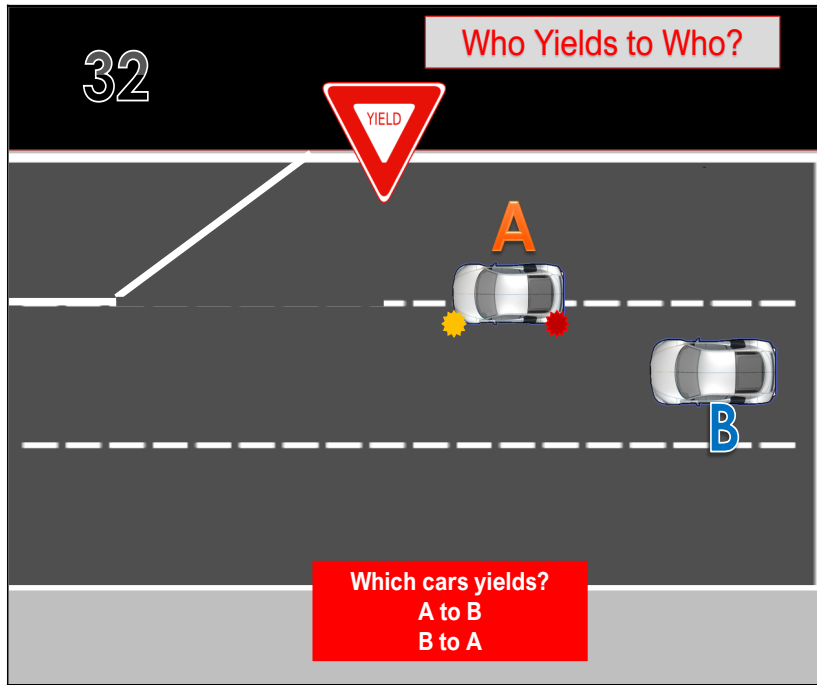
Answer:

A to B

WHY?

C. RULE OF LAW- YIELD SIGN

E. ENTERING -YIELDS TO ESTABLISHED



32 Who Yields to Who?

Which cars yields?

A to B

B to A

Answer:

B to A

32

WHY?

A. LAST- YIELDS TO FIRST

B. LEFT- YIELDS TO RIGHT

C. RULE OF LAW-SIGN

D. SECONDARY YIELDS TO MAIN

E. ENTERING -YIELDS TO ESTABLISHED

F. AVOID COLLISION

32

Answer:

B to a

WHY?

F. AVOID COLLISION

DRIVER RESPONSIBILITY TO AVOID COLLISION

