

# III. YOUR TEEN DRIVER: ENTRY & PRE-DRIVE

Lessons and Hints to Work With Your New Teen Driver



Part 3

**Be Ready, Be Safe, Be Responsible**

## Lessons and Hints to Work With Your New Teen Driver

- These resources are based on a behind the wheel program that is used by trained driver education teachers.

Purpose :

- to give adults supervising practice driving with a teen driver, an orderly, standard routine.
- To provide objectives and methods similar to those used by in-car driving instructors that may:
  - reduce stressful situations for adult and teen.
  - reduce risk by allowing the teen driver to gradually progress through skill levels and driving environments.
  - The “Be Ready, Be Safe, Be Responsible” approach, is the motto used by the Novice Driver Statewide Program, and is used in the PA Perceptual Driving Curriculum.

**Be Ready, Be Safe, Be Responsible**



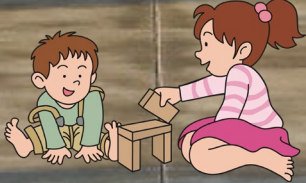
**ENTRY**

**LOOK**

- **for small children / animals around or near the car.**

**Be Ready, Be Safe, Be Responsible**







# ENTRY

## **ENTER - UNLOCK, ENTER**

- ▶ **If parked on street-**
  - **Key in hand**
  - **From front – Why?**

**Be Ready, Be Safe, Be Responsible**



# PREPARING TO DRIVE

**Pre-start Procedures are designed to:**

- **Help with personal protection against attack, abduction, and carjacking.**
- **Allow the driver to adjust and check control, safety, and comfort devices prior to moving the vehicle.**

**Be Ready, Be Safe, Be Responsible**





PREPARING  
TO DRIVE

Some Basics

<https://youtu.be/tEnV2nTtixg>



# PRE-START PROCEDURES

- 1. Lock the Doors**
- 2. Place key in ignition.**
- 3. Adjust in this order**
  - seat & head restraint
  - steering wheel, pedals ( if pedals are adjustable)
  - mirrors
- 4. Adjust inside and outside mirrors for maximum field of view.**
- 5. Fasten and adjust safety belt and make sure all passengers buckle up.**

**Be Ready, Be Safe, Be Responsible**

# PREPARING TO DRIVE

1

The Basics: Adjust the Seat

<https://youtu.be/Ct4iugfz-ug>

2

The Basics: Adjust the  
Steering Wheel

<https://youtu.be/eAlbwVE9mG0>

## REARVIEW MIRROR SETTINGS

- The next adjustment that you should make after the seat adjustment should be the **adjusting the rearview** and **side view mirrors**

Be Ready, Be Safe, Be Responsible





# REARVIEW MIRROR SETTINGS

- Many Drivers may have their driving mirrors adjusted in what is known as...

## **The Traditional Mirror Setting**

**Let's take a look at this setting and some of the problems caused by its use.**

**Be Ready, Be Safe, Be Responsible**

# REARVIEW MIRROR SETTINGS

- The main problem with mirrors in the traditional setting are the areas known as **BLIND SPOTS**.
- **Blind Spots** are the areas outside of the field of view of the side mirrors.
- **Blind Spots** are dangerous because of your inability to see vehicles in these areas.

Be Ready, Be Safe, Be Responsible

# MIRROR SETTINGS

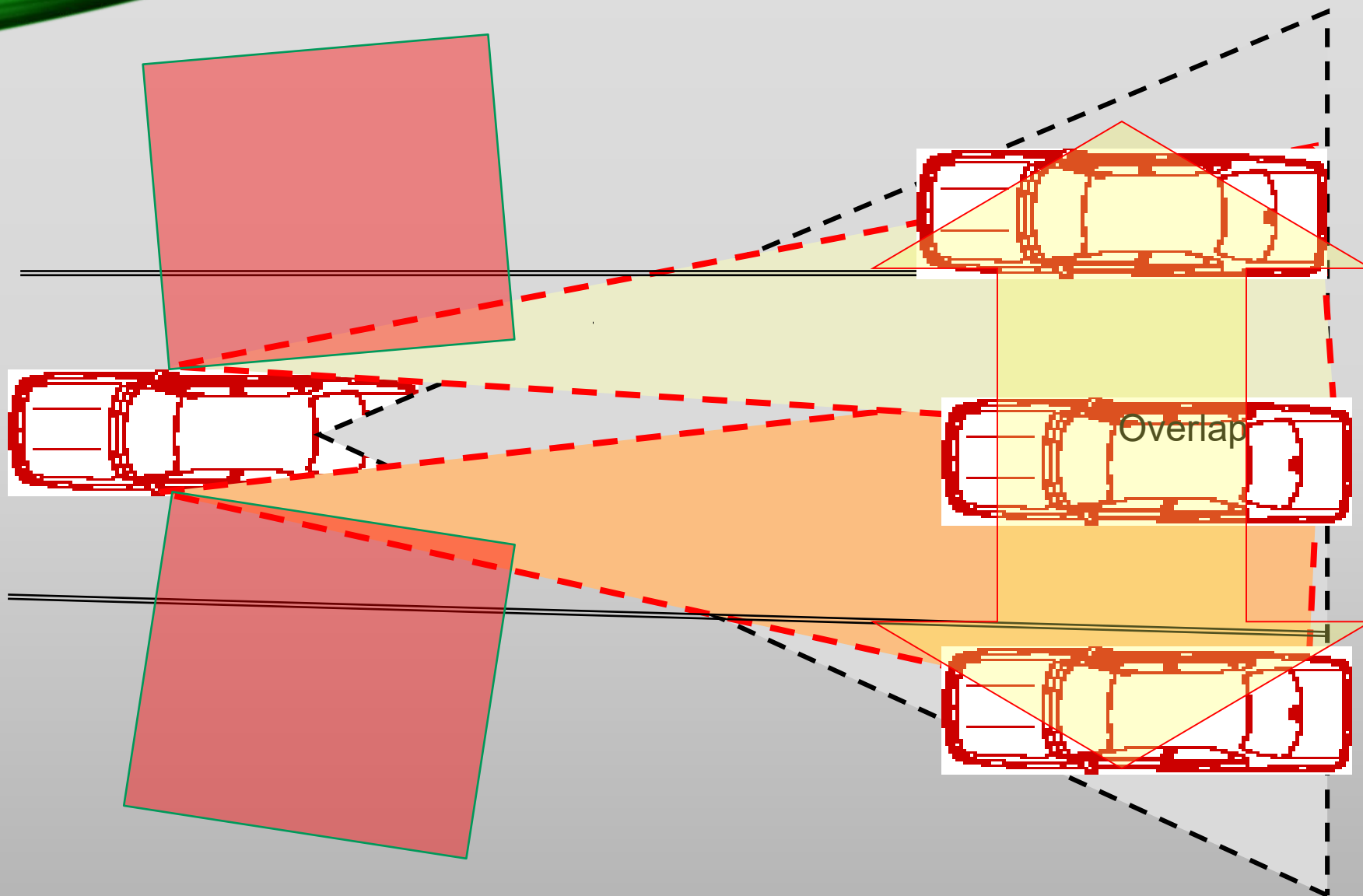
3

The Basics: Adjust the Mirrors

[https://youtu.be/fz0HBjt7b\\_o](https://youtu.be/fz0HBjt7b_o)



# TRADITIONAL MIRROR SETTINGS



# MIRROR SETTINGS

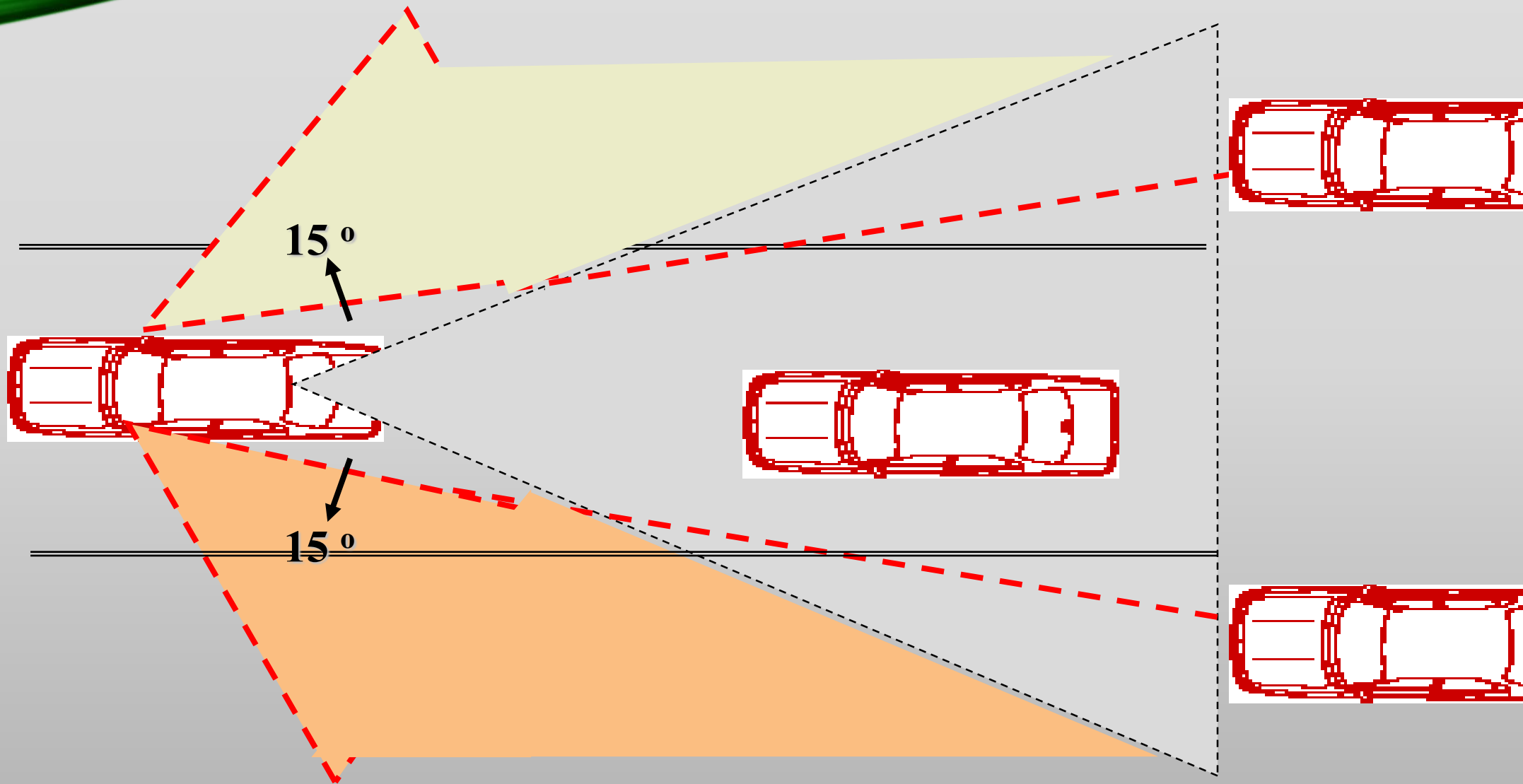
- One way to combat the problems caused by the traditional mirror setting is to adjust the mirrors to what is known as...

## Blind-Spot Glare Reduction



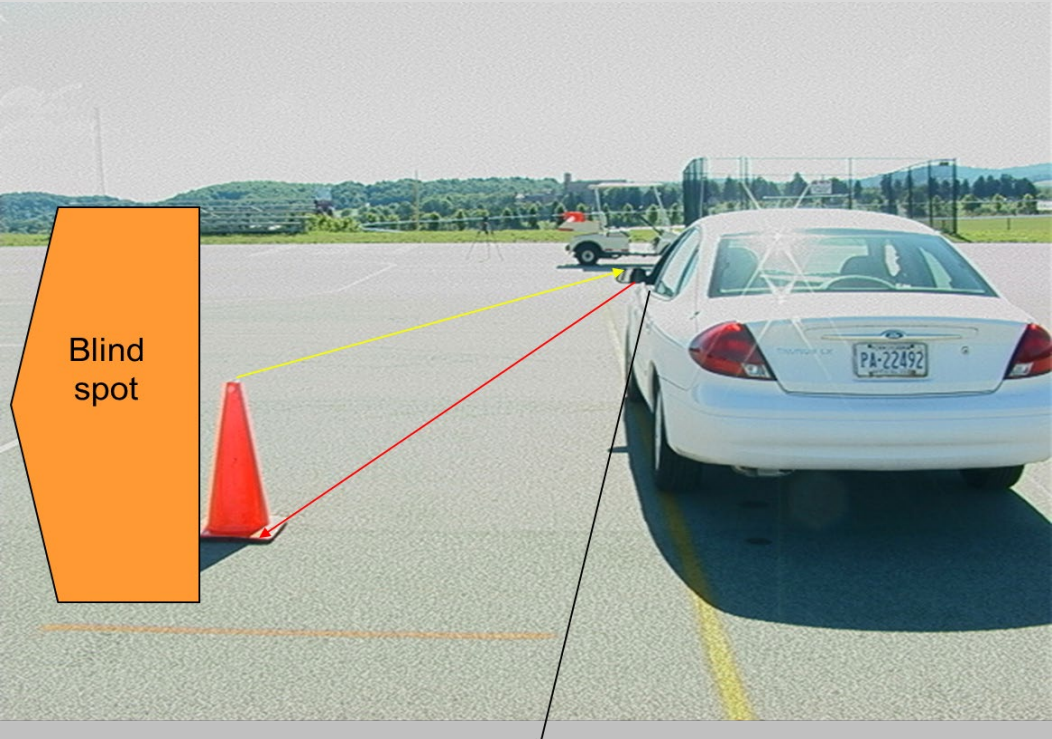
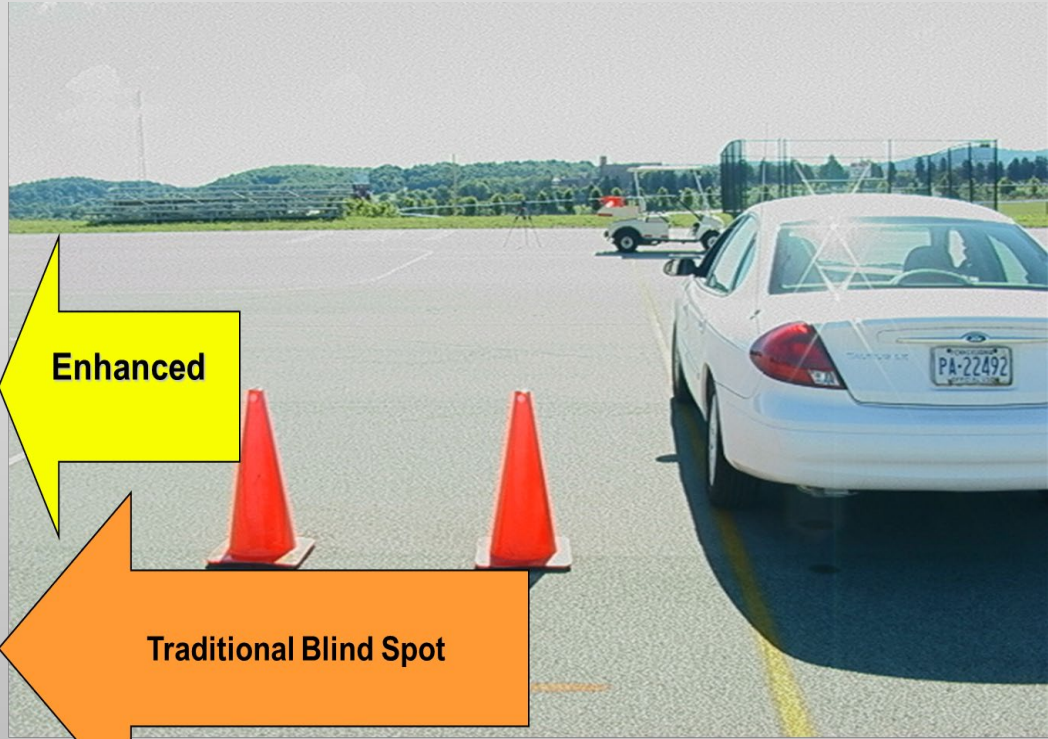
**Be Ready, Be Safe, Be Responsible**

# Blind-Spot Glare Reduction Mirror Settings





# ENHANCED-(B.S.G.R) SETTING



# THE CONTROLS

## The Basics: Understanding the Car

4

Have the driver find and operate the devices and identify the dash lights

Practice this as a routine every time.

<https://youtu.be/EuY9h2injks>



**START SIMPLE**

**WORK SLOWLY**

**PRACTICE, REPEAT**

**Be Ready, Be Safe, Be Responsible**

## **Be Ready, Be Safe, Be Responsible**

This series was produced by the Novice Driver Statewide Program and the IUP Institute for Rural Health and Safety through a grant from the PA Highway Safety Office

Videos and Photos: IRHS/NDSP

Other Photos , 3-D models: Creative Commons and MS online resources

You Tube Links-CHOP



# NEXT UP: STARTING AND MOVING

