



Indiana University of Pennsylvania

JAZZ ENSEMBLES

Needed: Saxophones, trumpets, trombones, piano,
bass, guitar, drums, aux. perc, vocal
Open to all Music Majors and Non-Majors!



AUDITIONS

Wednesday, August 28

12:00-4:00

in room 116

Signup online; link found in audition packet

Audition music is available on the
IUP Music Ensemble auditions web page

<https://www.iup.edu/music/ensembles/music-ensemble-auditions.html>

For more information, contact Dr. Flowers at jflowers@iup.edu

IUP Jazz Audition Materials F2024

Sign up here:

https://iup0-my.sharepoint.com/:x:/g/personal/jflowers_iup_edu/EQcUmZx7KShGgeGVjEvyWEEB_aA3vUJjqQ9mA5pDonmig?e=2bBSjH

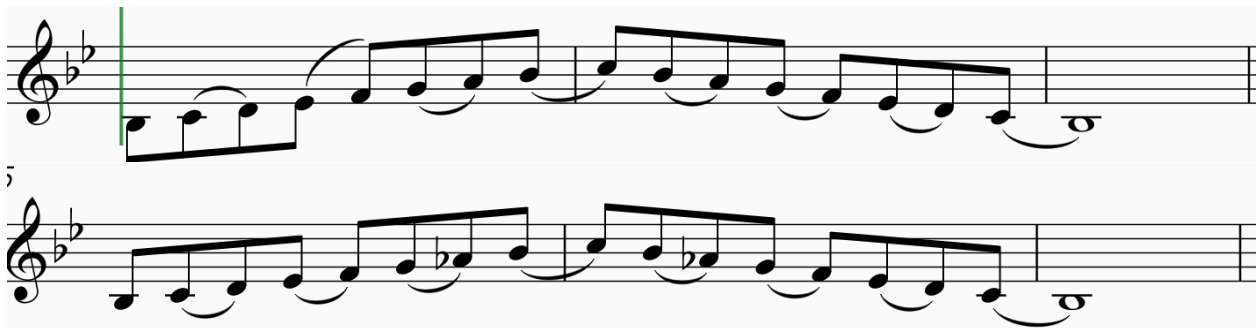
Recordings:

<https://youtu.be/UN8HHmSXjkl?si=UcmHORVoilx39SBY>

https://iup0-my.sharepoint.com/:f:/g/personal/jflowers_iup_edu/EgLzmgd6AsRNlfnRLUVRtwBTDCp7e19mcQ0fGmWQQSLMg?e=9jXfc1

In addition to the music below, please be prepared to perform the following:

Everyone excluding drums: Concert Bb and Bb mixolydian in swing eighths with the articulation found below, vocalists may choose their own syllable (Doo-ba doo-ba works well)



Piano, Guitar, and Bass: If possible, demonstrate the ability to create a stylistic part from just a chord progression. Piano and guitar, please be able to “comp” as you would behind a soloist

1. Medium swing
2. Fast swing
3. Bossa Nova
4. Funk

Please use the following chord progression:

Ami7 | D7(b9) | GMA7 | CMA7 | F#mi7(b5) | B7(#5,#9) | Emi(MA7) | E7(b9)|

Drums: Be prepared to play 16 measures of the following grooves: Medium Swing, Fast Swing, Bossa Nova, Samba, Funk

Autumn

TRACK 15

Jim Snidero

♩ = 110

INTRO B \emptyset

E7 \sharp 9

A-7

D7

G-7

C7



F7 \sharp 9

B7 \flat 9

E7 \sharp 5 \sharp 9

A-6



CHORUS 1

1

D-7

G7alt.

C Δ

F Δ \sharp 11



5

B \emptyset

E7 \flat 9

A-6



9

D-

G7

C Δ

F Δ



13

B \emptyset

E7alt.

A-6



17

B \flat /B

B \emptyset

E7alt.

A-6



21

D-7

G7

C Δ



25

B \emptyset

E7alt.

A-7

D7

G-7

C7



Flight of the Foo Birds

TRUMPET 1

♩=186

Words and Music by Neal Hefti
Transcribed and adapted by Myles Collins

CHORUS

The musical score for Trumpet 1, Chorus, consists of four staves of music. The key signature is one sharp (F#) and the time signature is common time (C). The tempo is marked as ♩=186. The score includes various musical notations such as eighth notes, quarter notes, and rests. Measure numbers 1 through 16 are indicated below the staves. A 'CHORUS' label is placed above the first staff. A 'TRUMPET 1' label is placed below the first staff. A 'CHORUS' label is placed above the second staff. A 'TRUMPET 1' label is placed below the second staff. A 'CHORUS' label is placed above the third staff. A 'TRUMPET 1' label is placed below the third staff. A 'CHORUS' label is placed above the fourth staff. A 'TRUMPET 1' label is placed below the fourth staff.

1 2 3 4 5 6 7 8 9 10 11 12 13 14 15 16