



Indiana University of Pennsylvania

JAZZ ENSEMBLES

Needed: Saxophones, trumpets, trombones, piano,
bass, guitar, drums, aux. perc, vocal
Open to all Music Majors and Non-Majors!



AUDITIONS

Wednesday, August 28

12:00-4:00

in room 116

Signup online; link found in audition packet

Audition music is available on the
IUP Music Ensemble auditions web page

<https://www.iup.edu/music/ensembles/music-ensemble-auditions.html>

For more information, contact Dr. Flowers at jflowers@iup.edu

IUP Jazz Audition Materials F2024

Sign up here:

https://iup0-my.sharepoint.com/:x:/g/personal/jflowers_iup_edu/EQcUmZx7KShGgeGVjEvyWEEB_aA3vIUJqQ9mA5pDonmig?e=2bBSjH

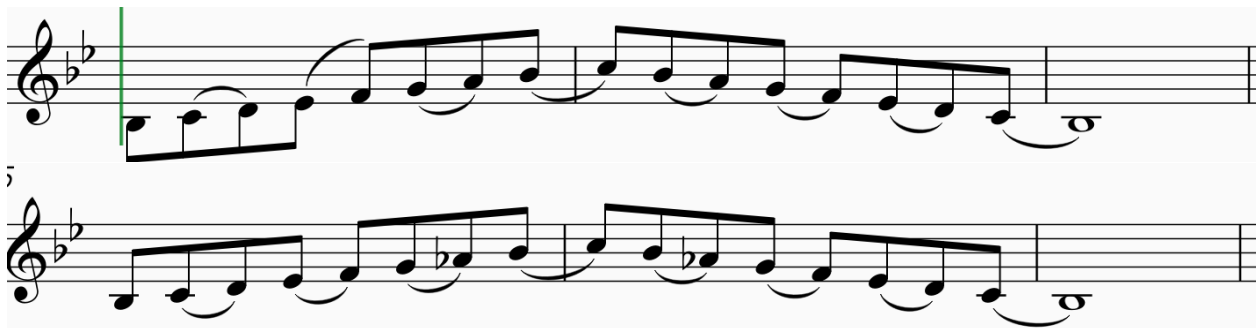
Recordings:

<https://youtu.be/UN8HHmSXjkl?si=UcmHORVoilx39SBY>

https://iup0-my.sharepoint.com/:f:/g/personal/jflowers_iup_edu/EgLzmgd6AsRNlfnRLUVRtwBTDCp7e19mcQ0fGmWQQSLMg?e=9jXfc1

In addition to the music below, please be prepared to perform the following:

Everyone excluding drums: Concert Bb and Bb mixolydian in swing eighths with the articulation found below, vocalists may choose their own syllable (Doo-ba doo-ba works well)



Piano, Guitar, and Bass: If possible, demonstrate the ability to create a stylistic part from just a chord progression. Piano and guitar, please be able to “comp” as you would behind a soloist

1. Medium swing
2. Fast swing
3. Bossa Nova
4. Funk

Please use the following chord progression:

Ami7 | D7(b9) | GMA7 | CMA7 | F#mi7(b5) | B7(#5,#9) | Emi(MA7) | E7(b9)|

Drums: Be prepared to play 16 measures of the following grooves: Medium Swing, Fast Swing, Bossa Nova, Samba, Funk

TRACK 15

♩ = 110
INTRO A♭

[illegible]

C-7

5 Aø D7^{b9} 4 G-

The bass line of "The Sound of Silence" in G major. It begins with a 5-measure rest, followed by a quarter note G2, an eighth note A2, and a quarter note B2. This is followed by a quarter note C3, an eighth note D3, and a quarter note E3. The next measure contains a quarter note F#3, an eighth note G3, and a quarter note A3. The final measure of the line contains a quarter note B3, an eighth note C4, and a quarter note D4. The notation includes chord symbols Aø, D7^{b9}, and G- above the staff, and fingerings 5, 4, and 4 below the staff.

Musical notation for the bass line of 'The Girl on the Train'. The notation is on a single staff with a bass clef. It consists of four measures, each with a chord symbol above it: C-, F7, BbΔ, and EbΔ. The notes are as follows: Measure 1 (C-) has notes G2, F2, E2, D2, C2, B1, A1, G1; Measure 2 (F7) has notes F2, E2, D2, C2, B1, A1, G1; Measure 3 (BbΔ) has notes Bb2, Ab2, Gb2, F2, E2, D2, C2, B1; Measure 4 (EbΔ) has notes Eb2, Db2, Cb2, Bb1, Ab1, Gb1, F2, E2. The notes are connected by a continuous line, indicating a single melodic line.

Musical notation for the bass line of "The Sound of Silence". The notation is on a single staff with a bass clef. It begins with a measure containing a whole rest, marked with the number 13. The first measure is labeled "Aø" and contains a half note G2, a half note F#2, and a half note E2. The second measure is labeled "D7alt." and contains a half note D2, a half note C#2, and a half note B1. The third measure is labeled "G-" and contains a half note G2, a half note F#2, and a half note E2. The fourth measure contains a half note D2, a half note C#2, and a half note B1. The fifth measure contains a half note G2, a half note F#2, and a half note E2. The sixth measure contains a half note D2, a half note C#2, and a half note B1. The seventh measure contains a half note G2, a half note F#2, and a half note E2. The eighth measure contains a half note D2, a half note C#2, and a half note B1. The ninth measure contains a half note G2, a half note F#2, and a half note E2. The tenth measure contains a half note D2, a half note C#2, and a half note B1. The eleventh measure contains a half note G2, a half note F#2, and a half note E2. The twelfth measure contains a half note D2, a half note C#2, and a half note B1. The thirteenth measure contains a half note G2, a half note F#2, and a half note E2. The fourteenth measure contains a half note D2, a half note C#2, and a half note B1. The fifteenth measure contains a half note G2, a half note F#2, and a half note E2. The sixteenth measure contains a half note D2, a half note C#2, and a half note B1. The seventeenth measure contains a half note G2, a half note F#2, and a half note E2. The eighteenth measure contains a half note D2, a half note C#2, and a half note B1. The nineteenth measure contains a half note G2, a half note F#2, and a half note E2. The twentieth measure contains a half note D2, a half note C#2, and a half note B1. The notation includes various musical symbols such as accidentals, ties, and slurs.

17 $A\flat/A$ $A\emptyset$ D7alt. G-6

21 C-7 F7 BbΔ Eb7#11

The musical notation shows a sequence of chords on a single staff. The first chord is A \emptyset . This is followed by a measure containing four eighth notes: D \flat , E \flat , F \flat , and G \flat , which are labeled as D7 \flat 9. The next measure contains two eighth notes: G \flat and F \flat , labeled as G-7. This is followed by a quarter note G \flat , labeled as C7. The next measure contains two eighth notes: F \flat and E \flat , labeled as F-7. The final measure contains two eighth notes: D \flat and C \flat , labeled as B \flat 7.

Flight of the Foo Birds

TROMBONE 3

♩=186

Words and Music by Neal Hefti
Transcribed and adapted by Myles Collins

Musical score for Trombone 3, measures 121-143. The score is written in bass clef with a key signature of one flat (B-flat). The tempo is marked as ♩=186. The score includes various musical notations such as slurs, ties, and dynamic markings (e.g., *mezzo-forte*).

Measures 121-124: Measure 121 begins with a circled 'M' and a *mezzo-forte* marking. Measures 122, 123, and 124 follow with melodic lines and rests.

Measures 125-128: Measure 125 continues the melodic line. Measure 126 has a *mezzo-forte* marking. Measure 127 includes a first ending bracket labeled '1st X'. Measure 128 ends with a double bar line.

Measures 129-132: Measure 129 includes a second ending bracket labeled '2nd X'. Measure 130 has a *mezzo-forte* marking. Measure 131 begins with a circled 'N'. Measure 132 continues the melodic line.

Measures 133-136: Measures 133, 134, 135, and 136 continue the melodic line with various slurs and ties. Measure 136 ends with a double bar line.

Measures 137-140: Measure 137 has a *mezzo-forte* marking. Measure 138 has a circled 'O'. Measures 139 and 140 continue the melodic line.

Measures 141-143: Measures 141, 142, and 143 continue the melodic line with various slurs and ties.