



Indiana University of Pennsylvania

JAZZ ENSEMBLES

Needed: Saxophones, trumpets, trombones, piano,
bass, guitar, drums, aux. perc, vocal
Open to all Music Majors and Non-Majors!



AUDITIONS

Wednesday, August 28

12:00-4:00

in room 116

Signup online; link found in audition packet

Audition music is available on the
IUP Music Ensemble auditions web page

<https://www.iup.edu/music/ensembles/music-ensemble-auditions.html>

For more information, contact Dr. Flowers at jflowers@iup.edu

IUP Jazz Audition Materials F2024

Sign up here:

https://iup0-my.sharepoint.com/:x:/g/personal/jflowers_iup_edu/EQcUmZx7KShGgeGVjEvyWEEB_aA3vUJjqQ9mA5pDonmig?e=2bBSjH

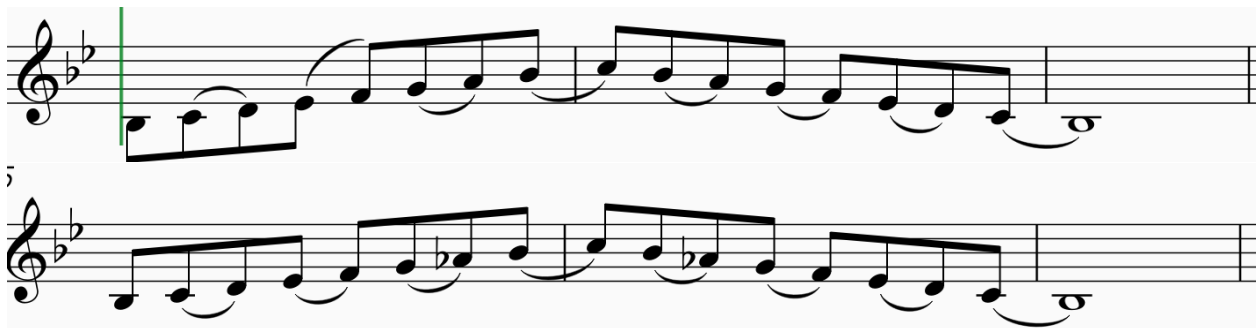
Recordings:

<https://youtu.be/UN8HHmSXjkl?si=UcmHORVoilx39SBY>

https://iup0-my.sharepoint.com/:f:/g/personal/jflowers_iup_edu/EgLzmgd6AsRNlfnRLUVRtwBTDCp7e19mcQ0fGmWQQSLMg?e=9jXfc1

In addition to the music below, please be prepared to perform the following:

Everyone excluding drums: Concert Bb and Bb mixolydian in swing eighths with the articulation found below, vocalists may choose their own syllable (Doo-ba doo-ba works well)



Piano, Guitar, and Bass: If possible, demonstrate the ability to create a stylistic part from just a chord progression. Piano and guitar, please be able to “comp” as you would behind a soloist

1. Medium swing
2. Fast swing
3. Bossa Nova
4. Funk

Please use the following chord progression:

Ami7 | D7(b9) | GMA7 | CMA7 | F#mi7(b5) | B7(#5,#9) | Emi(MA7) | E7(b9)|

Drums: Be prepared to play 16 measures of the following grooves: Medium Swing, Fast Swing, Bossa Nova, Samba, Funk

Flight of the Foo Birds

BASS

♩=186

Words and Music by Neal Hefti
Transcribed and adapted by Myles Collins

The image displays a bass line for the song 'Flight of the Foo Birds'. It consists of nine staves of music, each containing four measures. The key signature is one flat (B-flat), and the time signature is 4/4. The tempo is marked as ♩=186. The music is written in bass clef. The first staff begins with a mezzo-forte (mf) dynamic marking. The measures are numbered 1 through 36. There are three repeat signs at the end of the first, fourth, and seventh staves. A first ending bracket labeled 'A' spans measures 17 to 20. A second ending bracket labeled 'B' spans measures 25 to 28. A third ending bracket labeled 'C' spans measures 33 to 36. The music features a variety of note values, including eighth, quarter, and half notes, as well as rests and accidentals.

DRUMS

Flight of the Foo Birds

♩=186 **DRUMS**

Words and Music by Neal Hefti
Transcribed and adapted by Myles Collins

PLAY 16 BARS TIME

(A) SAXES

17 18 19 20

21 22 23 24

(B) TRUMPETS

PLAY 7 BARS TIME

HAVE STICKS READY

25 32

(C) H.HAT

33 34 35 36

37 38 39 40

(D) ALTO SOLO

LIGHT FILL **(E)** ALTO SOLO

LIGHT FILL

PLAY 3 BARS TIME

PLAY 3 BARS TIME

41 49

(E) TUTTI

57 58 59 60

TRUMPET SOLO BREAK

(F)

PLAY 4 BARS

PLAY 7 BARS TIME

61 65 72

(G) H.HAT

73 74 75 76

77 78 79 80

TENOR SOLO

Flight of the Foo Birds

GUITAR

♩=185

Words and Music by Neal Hefti
Transcribed and adapted by Myles Collins

The guitar sheet music is written in treble clef with a key signature of one flat (Bb) and a common time signature (C). The tempo is marked as ♩=185. The music is divided into eight measures, each containing a series of chords and a rhythmic pattern of eighth notes. The chords are as follows:

- Measure 1: Gm7, C7(b9), F, Dm7, Gm7, C7(b9), Dm7, F13
- Measure 2: Bb, B°, C6, D7, Ab7, G7, Gm7, Ab7(b9)
- Measure 3: Gm7, C7(b9), F, Dm7, Gm7, C7(b9), Dm7, F13
- Measure 4: Bb, B°, C6, D7, Ab7, G7, C7, F, C6, Bb, Bb6 (triplets)
- Measure 5: A6, Bm7, C#m7, Dm F6, Dm7
- Measure 6: G, Am7, Dm7, G, C
- Measure 7: Gm7, C7(b9), F, Dm7, Gm7, C7(b9), Dm7, F13
- Measure 8: Bb, B°, C6, D7, Ab7, G7, C7, F, n.c.

The sheet music includes a 'me' (measure) symbol at the beginning of measures 1, 5, and 7. Measure numbers 1 through 32 are indicated below the staff.

Flight of the Foo Birds

PIANO

Words and Music by Neal Hefti
Transcribed by Myles Collins

♩=185

Measures 1-4 of the piano accompaniment. The key signature has one flat (Bb). Measure 1 starts with a middle C (C4) in the bass clef. The notes are: 1. G4 (quarter), A4 (quarter), Bb4 (quarter), A4 (quarter), G4 (quarter), F4 (half). 2. E4 (quarter), D4 (quarter), C4 (quarter), Bb4 (quarter), A4 (quarter), G4 (half). 3. F4 (quarter), E4 (quarter), D4 (quarter), C4 (quarter), Bb4 (quarter), A4 (half). 4. G4 (quarter), F4 (quarter), E4 (quarter), D4 (quarter), C4 (quarter), Bb4 (half). Chords: 1. Gm7, C7(b9); 2. F, Dm7; 3. Gm7, C7(b9); 4. Dm7, F13.

Measures 5-8 of the piano accompaniment. Measure 5 starts with a Bb4 in the bass clef. The notes are: 5. Bb4 (quarter), A4 (quarter), G4 (quarter), F4 (quarter), E4 (quarter), D4 (half). 6. C4 (quarter), Bb4 (quarter), A4 (quarter), G4 (quarter), F4 (quarter), E4 (half). 7. D4 (quarter), C4 (quarter), Bb4 (quarter), A4 (quarter), G4 (quarter), F4 (half). 8. E4 (quarter), D4 (quarter), C4 (quarter), Bb4 (quarter), A4 (quarter), G4 (half). Chords: 5. Bb, B°; 6. C6, D7, Ab7; 7. G7; 8. Gm7, Ab7(b9).

Measures 9-12 of the piano accompaniment. The notes are: 9. G4 (quarter), A4 (quarter), Bb4 (quarter), A4 (quarter), G4 (quarter), F4 (half). 10. E4 (quarter), D4 (quarter), C4 (quarter), Bb4 (quarter), A4 (quarter), G4 (half). 11. F4 (quarter), E4 (quarter), D4 (quarter), C4 (quarter), Bb4 (quarter), A4 (half). 12. G4 (quarter), F4 (quarter), E4 (quarter), D4 (quarter), C4 (quarter), Bb4 (half). Chords: 9. Gm7, C7(b9); 10. F, Dm7; 11. Gm7, C7(b9); 12. Dm7, F13.

Measures 13-16 of the piano accompaniment. Measure 13 starts with a Bb4 in the bass clef. The notes are: 13. Bb4 (quarter), A4 (quarter), G4 (quarter), F4 (quarter), E4 (quarter), D4 (half). 14. C4 (quarter), Bb4 (quarter), A4 (quarter), G4 (quarter), F4 (quarter), E4 (half). 15. D4 (quarter), C4 (quarter), Bb4 (quarter), A4 (quarter), G4 (quarter), F4 (half). 16. E4 (quarter), D4 (quarter), C4 (quarter), Bb4 (quarter), A4 (quarter), G4 (half). Chords: 13. Bb, B°; 14. C6, D7, Ab7; 15. G7, C7; 16. F, C6, Bb, Bb6.

Measures 17-20 of the piano accompaniment. Measure 17 starts with an A6 in the bass clef. The notes are: 17. A6 (quarter), G4 (quarter), F4 (quarter), E4 (quarter), D4 (quarter), C4 (half). 18. Bb4 (quarter), A4 (quarter), G4 (quarter), F4 (quarter), E4 (quarter), D4 (half). 19. C4 (quarter), Bb4 (quarter), A4 (quarter), G4 (quarter), F4 (quarter), E4 (half). 20. D4 (quarter), C4 (quarter), Bb4 (quarter), A4 (quarter), G4 (quarter), F4 (half). Chords: 17. A6; 18. Bm7; 19. C#m7; 20. Dm, F6, Dm7.

Measures 21-24 of the piano accompaniment. Measure 21 starts with a G4 in the bass clef. The notes are: 21. G4 (quarter), F4 (quarter), E4 (quarter), D4 (quarter), C4 (quarter), Bb4 (half). 22. A4 (quarter), G4 (quarter), F4 (quarter), E4 (quarter), D4 (quarter), C4 (half). 23. Bb4 (quarter), A4 (quarter), G4 (quarter), F4 (quarter), E4 (quarter), D4 (half). 24. C4 (quarter), Bb4 (quarter), A4 (quarter), G4 (quarter), F4 (quarter), E4 (half). Chords: 21. G, Am7; 22. Dm7, G; 23. C, N.C.; 24. SOLO.