

Changes to IUP VPN

IT Services has changed the settings for VPN on our standard laptops and desktops. These systems will now have two VPN connections available to use when connecting from an off-campus IUP network. The change is to allow users to invoke a VPN connection before logging into these systems. Here are the benefits of the change;

- Ability to sign into an IUP IT Standard system on an off-campus network, i.e., Comcast or other service providers for the first time.
- Increased speed in signing into these systems
- All user granted access to network drives will automatically map.
- Instant access to the IUP network offsite.

The two VPN connections;

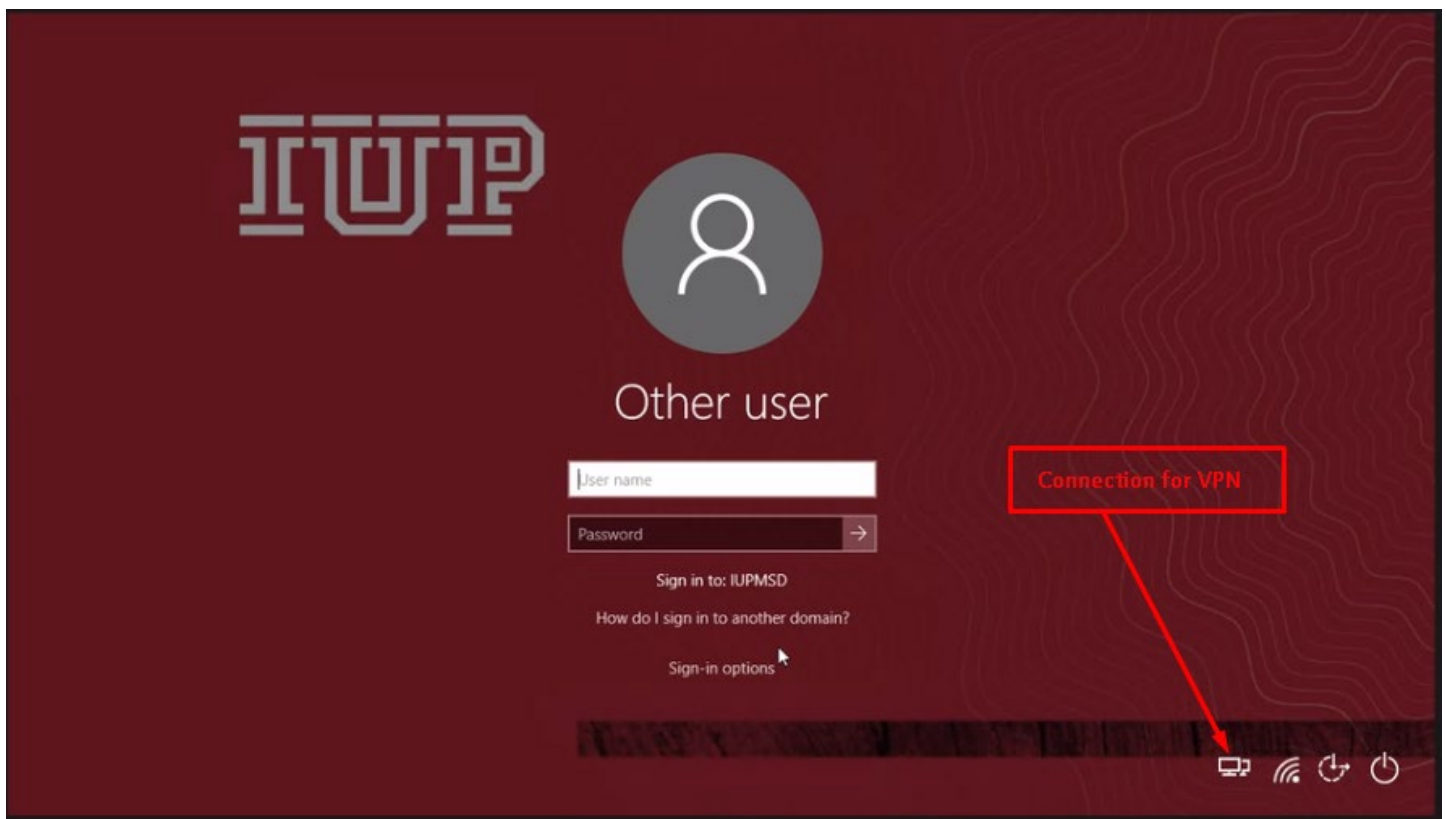
IUP VPN – Provides access to all services and network drives except SAP use

IUP VPN (SAP) – Provides access to all services and network drives, including SAP.

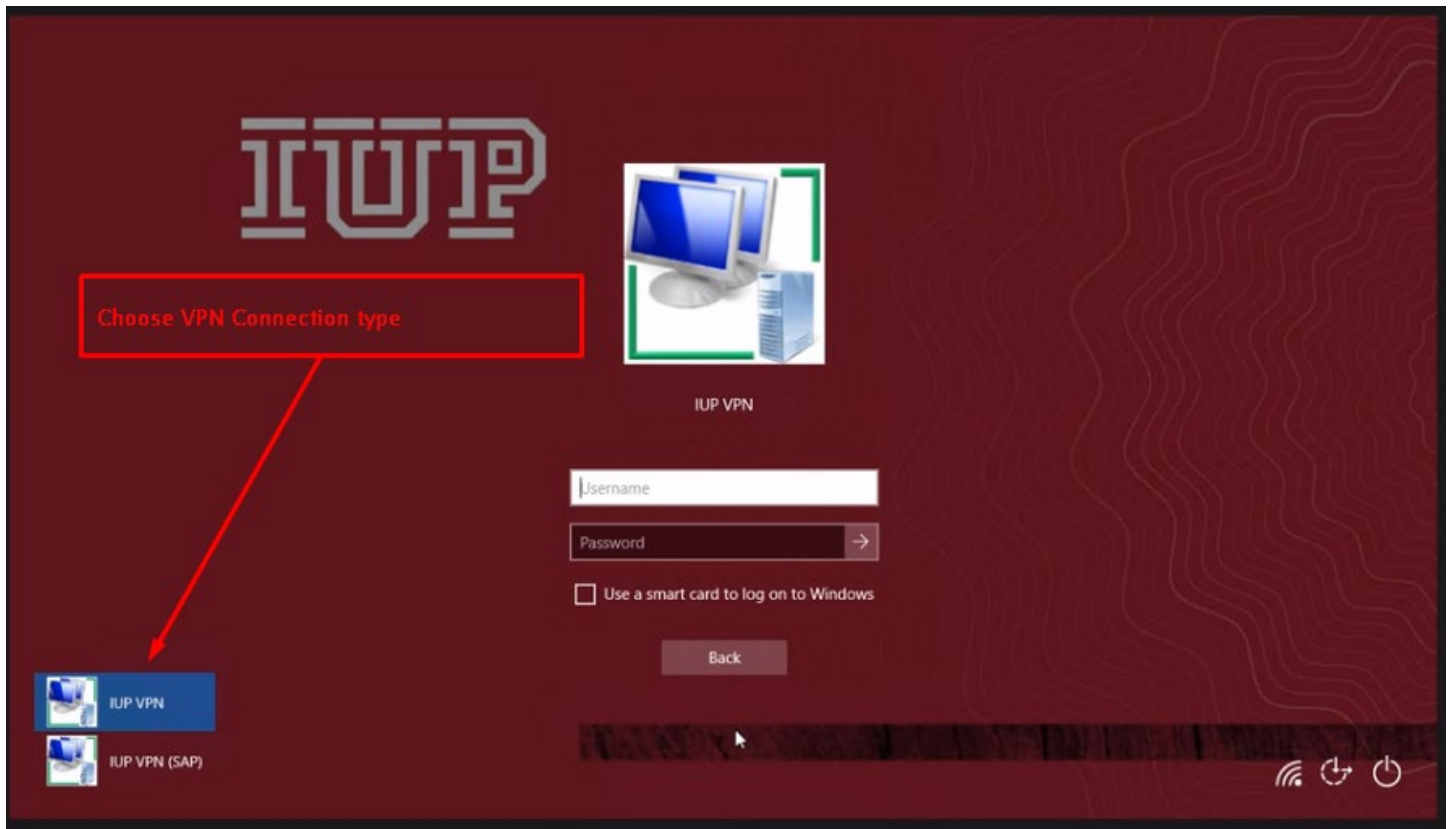
- You must USE this connection if working within SAP.

The change allows users to sign in to the VPN before logging into your system. Please follow the steps below;

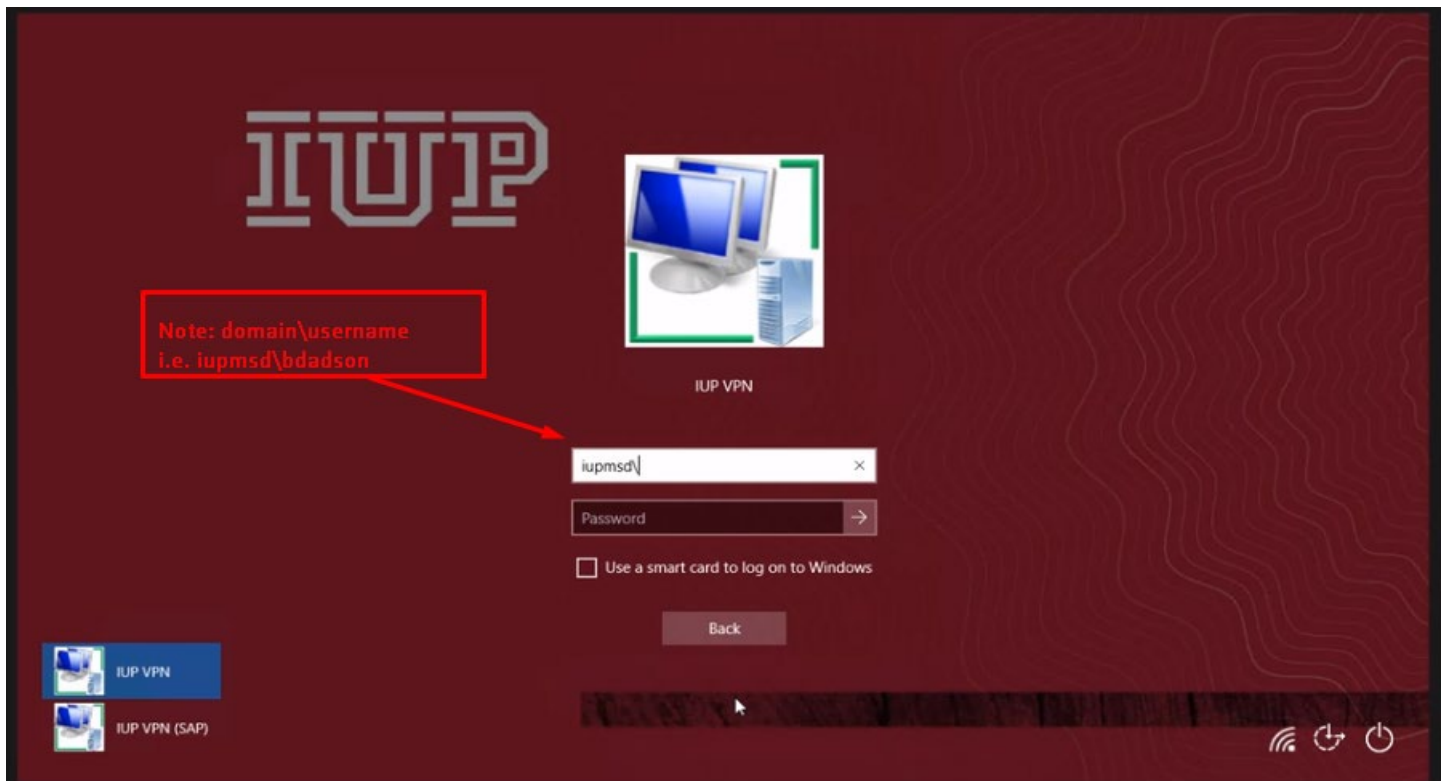
1. Click on the WIFI icon at the bottom right-hand corner of your screen to connect to your home WIFI or a shared WIFI at your current location. (NOT IUP)
2. Click on the two computer icons next to the WIFI icon on the bottom right-hand corner of the screen. This icon will not appear until you hold the following keys at the same time CTRL, ALT, DEL.



3. Now choose the VPN connection you want from the list on the bottom left-hand corner of your screen. **NOTE: Systems with SAP installed will see an additional VPN option.** The differences in connections are explained at the beginning of this document. Computers without SAP installed will default to the IUP VPN.



4. Log into the system as you would by typing your IUP network credentials in the username and password fields as shown below.



Note that signing into the VPN connection of choice will automatically sign you in to the system as well and WILL NOT prompt you with another authentication window.