



“By getting involved in organizations such as the Center for Media Production and Research and IUP-TV, I have gained production experience including working as a camera operator for IUP football and basketball games. These opportunities, outside the classroom, will help prepare me for my internship and future career in media production.”

Hayley Bush, Communications Media Class of 2019



*COMMUNICATIONS MEDIA STUDENTS MARIMAR MELENDEZ (R)
AND KWAME STROMAN ('16) (L)*

Message from the **DEAN**



LARA LUETKEHANS

On behalf of the College of Education and Educational Technology community, it is my pleasure to share with you highlights of what we accomplished as a College in 2015-16. Guided by the IUP Strategic Plan 2015-2020 (<http://www.iup.edu/strategic-planning/>), our faculty, staff, students and alumni have worked to advance the College in each of the four Strategic Plan goal areas:

1. Provide innovative academic programs of high quality and value.
2. Prepare all of IUP's students for success in work and life, in addition to academic success.
3. Secure IUP's financial future.
4. Strengthen IUP's value to our local, state, and global partners.

Faculty have worked extraordinarily hard examining programs, resulting in many program revisions and approval of five new programs with several new programs in the pipeline. Our commitment to preparing future teachers, leaders, scholars and media professionals at both undergraduate and graduate levels continues to grow in response to regional and national needs.

Through partnerships at all levels, IUP's value is strengthened. This year the focus has been on expanding school-university partnerships to include various partner models and locations in our region. Our reach goes far beyond Pennsylvania. In spring 2016, IUP served as a host university to 16 International Leaders in Education (ILEP), to engage teachers from around the world in intercultural exchange and leadership development. These visiting scholars brought a richness to our campus, community, and school partners.

At over 100 strong, the faculty and staff of the COEET are committed to all of our students' success. Through the visioning and strategic planning process, our campus community agreed that the cornerstone of an IUP education is the rich engagement experiences that happen outside of the classroom. In this 2015-16 Annual Report, you'll see a special highlight of the six Centers and Clinics in our College. Through the work of the Centers and Clinics we are committed to serving the community while providing rich learning and scholarship experiences for our faculty and students.

As we look toward our future, we see a systematic growth in grantsmanship, both proposals and awards. We also feel fortunate to welcome a full-time Development Officer, Mr. Dave Maudie, to assist in advancing the College through alumni and donor relations. Our efforts are further supported in this area with the establishment of a College Advancement Council. Our inaugural members are a group of folks truly committed to seeing a secure financial future for the College. *We are in good hands!*

I hope you enjoy this report of our 2015-16 year in review.

TABLE OF CONTENTS

Message from the Dean	3
College Leadership	4
Labyrinth Center	5
New Colleagues	6
Awards and Scholarship	7
Technology Innovations	8
Alumni	9
Partnerships	10
New Programs	11
Centers	12
Diversity	14
Advancement.....	15
Scholarship	16

ANNUAL REPORT PRODUCTION TEAM

JEFF FRATANGELI, Editor in Chief
 BRANDON BOUDREAUX, Copy Editor
 NICOLLETE DEYARMIN, Asst. Copy Editor
 DAVID RAYMOND, Cover Design
 LYNNETTE COLTON, Proofreader

COLLEGE LEADERSHIP

LARA LUETKEHANS, Dean

LYNANNE BLACK, Dean's Associate for Academic Affairs

SUE RIEG, Dean's Associate for Educator Preparation

THERESA HENDERSON, Field Placement Support

FELICIA DANIEL, Administrative Assistant to the Dean

MARCEY BARNA, Administrative Assistant to the Dean's Associate

JUDY GEESEY, Administrative Assistant to the Dean's Associate

DAVE MAUDIE, Development Officer

COLLEGE TECHNOLOGY

LLOYD ONYETT, Assistant Dean for Technology and Facilities

CHRIS BARBER, Broadcast Systems Specialist

BRIAN CAROTHERS, Instructional Design Specialist

NANCY EVANS, Instructional Design Specialist

COLLEGE COMMUNICATIONS

JEFF FRATANGELI, Director

LYNNETTE COLTON, Assistant to the Director

DEPARTMENT LEADERSHIP

GARY DEAN, Chair, Adult and Community Education

JAN BAKER, Chair, Communication Disorders, Special Education,
and Disability Services

DAVID STEIN, Assistant Chair, Communication Disorders, Special Education,
and Disability Services

B. GAIL WILSON, Chair, Communications Media

VICKI ORTIZ, Assistant Chair, Communications Media

CLAIRE DANDENEAU, Chair, Counseling

MEL JENKINS, Chair, Developmental Studies

TIM RUNGE, Chair, Educational and School Psychology

KELLI PAQUETTE, Chair, Professional Studies in Education

DEANNA LAVERICK, Assistant Chair, Professional Studies in Education

JOHN LOWERY, Chair, Student Affairs in Higher Education

KAREN RIVOSECCHI, Director, Career and Technical Personnel Preparation

IUP created the Labyrinth Center in spring of 2016 to help students with an autism spectrum disorder (ASD) to realize their potential and find fulfilling careers after their college graduation by offering students with autism a one-credit course each semester to help them address the challenges they face in college. It is co-directed by special education faculty members Joann Migyanka and Becky Knickelbein.

In the fall of 2016, the pilot will also implement a peer-mentoring and peer coaching program in which interested students will take a one-credit course on effectively mentoring students with autism and then put what they learn into practice.

"We want to draw students from all over campus," Migyanka said. "Lots of Labyrinth students are in STEM [science, technology, engineering, and math] fields, so it would be nice to have peer mentors from biology or computer science, because that's what our students will need to know."

The Labyrinth Center started through an initiative of Pennsylvania's State System of Higher Education and the Pennsylvania Department of Education to provide students with ASD entering college, a growing population, the support they need.

Through donor support of the Dean's Innovation fund, the College of Education and Educational Technology invested additional funding to convert a classroom in Stouffer Hall to a space that would meet the center's needs and set out to help the Center build more resources. This investment supported Migyanka's participation in the Principal Investigators' Mentorship Academy, aimed at helping researchers obtain more grants. Dean Luetkehans supported pursuit of a National Science Foundation grant that targeted building up populations that are underrepresented in STEM fields.

Dean Luetkehans pulled together a cross-divisional research team, led by Migyanka, to explore ways to recruit students with autism into STEM fields and to provide them with the support to be successful.

One of the Labyrinth Center's goals is helping students with autism find fulfilling employment, and so the research team began working with industry partners. Dean Luetkehans calls it "embracing diversity of mind—seeing how their diverse ways of seeing and thinking about the world can be harnessed to solve some pretty big problems."



(Adapted from "Navigating the Maze" by Elaine Jacobs Smith, in the Summer 2016 issue of *IUP Magazine*)

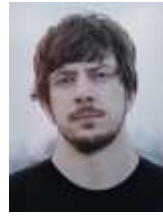
FACULTY



JACQUELINE MCGINTY
Adult and Community Education



RACHEL PORTER
Communications Media—Photography



JEREMY WALTMAN
Communications Media—Film & Video



ALICIA PENCE
Communication Disorders, Special Education, and Disability Services



AMBER RACCHINI
Developmental Studies



LUKE FAUST
Developmental Studies



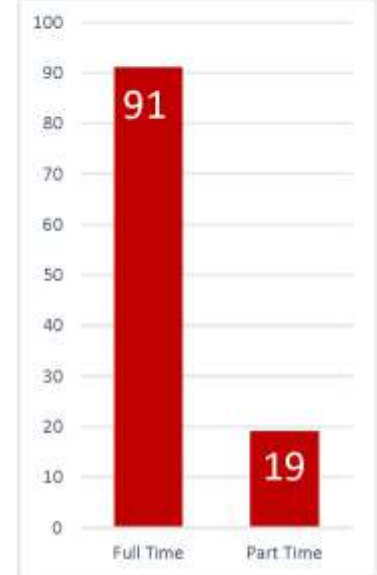
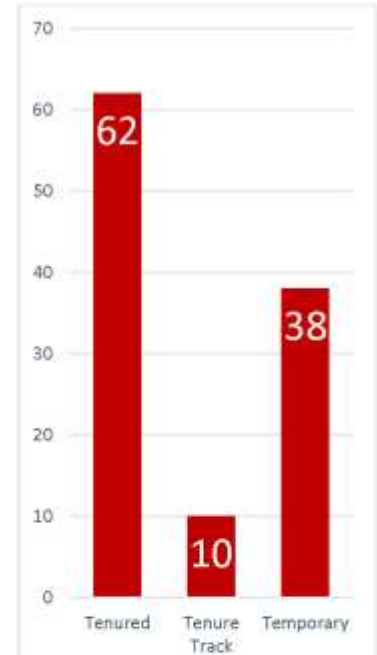
JENNA HENNESSEY
Educational and School Psychology



JULIE ANKRUM
Professional Studies in Education



KAYLEE WYNKOOP
Communication Disorders, Special Education, and Disability Services



STAFF



THERESA HENDERSON
Field Placement Support Educator Preparation



FELICIA DANIEL
Administrative Assistant to the Dean



NANCY EVANS
Instructional Design Specialist



BRIAN CAROTHERS
Instructional Design Specialist

COLLEGE AND UNIVERSITY AWARDS

2015 COEET
TEACHER-LEADER



SUE RIEG
Professor
Professional
Studies in
Education

2015 COEET
TEACHER-SCHOLAR
AND
2015 UNIVERSITY
DISTINGUISHED
FACULTY



**DEANNA
LAVERICK**
Professor
Professional
Studies in
Education

2016 UNIVERSITY
DISTINGUISHED
FACULTY



JOANN MIGYANKA
Associate Professor
Communication Disorders,
Special Education, and
Disability Services

2016 UNIVERSITY
DISTINGUISHED
FACULTY



**MARY BETH
LEIDMAN**
Professor
Communications
Media

GRANTS

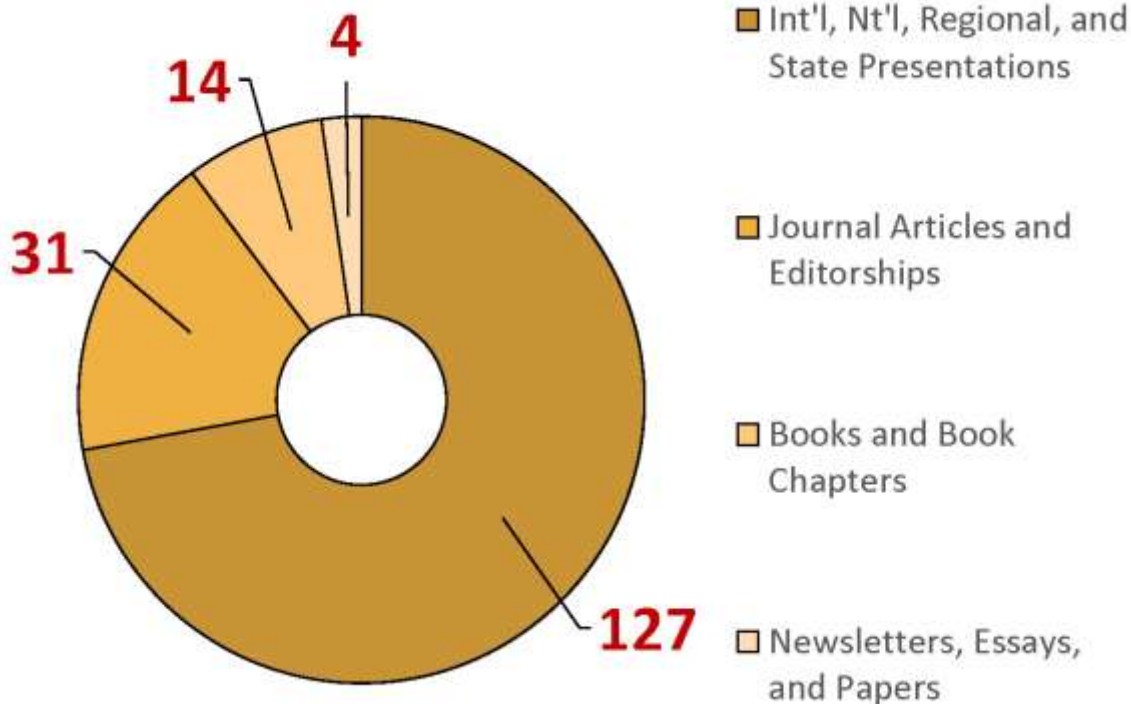
14 Proposals

= \$3,445,481

12 Awards

= \$2,821,935

SCHOLARSHIP



College Technology Day

60+ Workshops
August 2015 and
January 2016

Attendees from
nearly 30
regional colleges
and school
districts

Sessions
presented by: IUP
faculty and staff,
IUP students, and
visiting
presenters

Computer Labs

- 19 Student Labs throughout Davis, Stouffer, and Pratt Halls
- New computers in Photography & Graphics Lab
- New Computers in Multi-Media Lab

Technology Demonstration Lab

- Contains a variety of teaching hardware and software
- Allows teacher education students to explore current technologies

Interactive Table

- Projects images onto table surface
- Allows interactive educational tools, activities, and resources
- Accommodates up to 6 students simultaneously

3D Printing

- 3D Scanner and Printer installed
- Connected to HP Sprout
- Cutting edge interactive design and manipulation capabilities

MEGAN POMPUTIUS '05, M'09



Mrs. Megan Pomputius authored the children's book *Still My Mommy*, published by Mascot Books, in May 2016. Megan received her M.A. in 2005. In 2013, Megan was diagnosed with ovarian cancer and at the time, her daughter was only two years old. After beating cancer, she decided to write *Still My Mommy* about the ordeal through the eyes of her daughter. Megan says the book is about "what she thought and how she interpreted what was going on with me." She maintains a blog where she writes about her experiences, family, and life in western PA. She writes, "This page is dedicated to not only my journey that I can hopefully provide some support of those undergoing chemotherapy, surgery, working and raising kids... that through all the pain, hair loss, and changes, we can still be the same mommy that our kids know, maybe even a better version."

KEVIN BAILEY M'90



Kevin Bailey (SAHE '90) received the 2015 Alumni Scholar Award from the COEET on October 27. Bailey, who also received his bachelor's degree from IUP, currently works at the University of West Florida as the Vice President of Student Affairs. Recognized for his numerous leadership roles in student affairs by professional organizations, Bailey received the Ronald Lunardini Distinguished Alumni Award in 2009 from the SAHE department, and was honored by the National Association of Student Personnel Administrators (NASPA) as a member of the 2015 Pillars of the Profession Class. As a presenter, author, consultant, and educator, he speaks passionately about his experiences, particularly working with crisis management. While visiting campus to receive his award, Bailey spoke with current graduate students of the SAHE program. In the Management of Organizational Behaviors course, he shared his experience at Tulane University during the time of Hurricane Katrina. In addition, Bailey offered his professional advice about entering the field of student affairs.

P-12 PARTNERS

Our Professional Development School motto is Building the BRIDGE: Building Relationships for Innovation, Development, and Growth in Education. The College of Education and Educational



Technology is committed to the preparation of the highest quality professional educators by providing a challenging, research-based curriculum focused on theory and best educational practices, and through strong and rich clinical partnerships.

Strong collaborative partnerships with P-12 schools and high quality

clinical partners are central to the preparation of teacher candidates at IUP. The College of Education and Educational Technology deeply values our partnerships that share a commitment to innovative practices and which result in high quality teacher candidates and student achievement. The sustainability of dynamic relationships requires participation across institutional settings. Our formal partner districts are a diverse representation of excellent educational institutions in Allegheny, Cambria, and Indiana Counties.

In 2014, the Professional Development School Model expanded to the Indiana Area School District and has now expanded to the Blairsville-Saltsburg School District and Central Cambria School District. Along with opening their classrooms to undergraduates, these three partner districts have also hired Literacy Graduate Assistants for the 2016-17 year. The Graduate Assistants will work in the schools under the mentorship of Title I Teachers and Reading Specialists, providing additional literacy support to students.

Secondary English Education has just formed a new partnership with the Indiana Area School District for the 2016-17 academic year. Under the leadership of Dr. Jo-Anne Kerr, English Education majors will be immersed in classrooms their entire senior year.

A rich partnership has existed with the Pittsburgh Public School District since 2008. Teacher candidates in IUP's Early Childhood / Special Education Program (formerly Elementary Education Program) spend their senior year in schools balancing classes, working with small groups of children, and working alongside high-quality urban educators. Teacher candidates learn best practices in culturally responsive teaching, making a difference in student achievement and in the students' lives.

COMMUNITY COLLEGE PARTNERS

Butler County Community College (BC3)

- Partnership for Early Childhood Special Education
- Provides cost-effective way for students to earn Early Childhood and Special Education teaching certificates

Community College of Allegheny County (CCAC)

- Partnership for Middle Level Education
- Students can obtain an associate's degree through CCAC and bachelor of science degree through IUP



25 Programs

5 New Programs

School Psychology

- New Ph.D approved
- Replaces D.Ed. in School Psychology
- Provides greater employment opportunities in Pre K-12 and higher education

Pre-Audiology

- Offered in collaboration with the College of Natural Sciences and Mathematics
- Students can count first year of professional school toward bachelor's degree
- Students can transfer 30 credits of graduate-level audiology to complete IUP bachelor's degree

Autism Endorsement

- Certificate of Recognition awarded for working with students with Autism Spectrum Disorder
- Allows individuals holding PDE certification to complete 12 hours of coursework
- Provides student eligibility for the PDE Endorsement Certification in Autism Spectrum Disorder

Special Education/Reading Specialist

- The Special Education with Reading Specialist Certificate is new this year to the Bachelor of Science in Education
- 5-year program leads to three certifications:
 - Special Education Pre K-8
 - Special Education 7-12
 - Reading Specialist PreK-12
- Students will focus on special education preparation during the first four years and complete the reading coursework during the fifth year

Speech-Language Pathology and Audiology

- The B.S.Ed. in Speech-Language Pathology and Audiology has been converted to a B.S. degree
- Curriculum revised to provide pre-professional preparation for the new Education Specialist Certification in School Speech-Language Pathology for which our M.S. graduates qualify



BECKY KNICKELBEIN AND JOANN
MIGYANKA
CO-DIRECTORS

IUP Labyrinth

The Labyrinth Center, co-directed by Joann Migyanka and Becky Knickelbein, is a specially-designed facility that assists IUP students with Autism Spectrum Diagnosis. This facility contains study areas and discussion/relaxation areas that provide a comprehensive and holistic approach to support IUP students with autism. Programming exists to assist students with building relationships, gaining independence, experiencing academic success, and graduating from IUP with the professional and personal skills needed to embark on fulfilling a life and career.

Literacy Center

The Literacy Center, directed by DeAnna Laverick, allows undergraduate and graduate students to preview reading materials for students of all grade levels. Located in Davis Hall B5, it provides a variety of books used by teacher education majors and faculty. During the academic year, the center offers tutoring services conducted by undergraduate education majors. In the summer, graduate students who are certified teachers earning their M.Ed. in Literacy use the center as a resource for children who attend the Summer Reading Program. This program provides intensive individualized assessment, diagnosis, and instruction for children experiencing difficulty with literacy.



LITERACY CENTER MURAL CREATED BY
BETHANY ELLIOTT, RESIDENT ARTIST



SAM GLADDING, PROFESSOR OF
COUNSELING AT WAKE FOREST
UNIVERSITY (L) AND JONN
MCCARTHY (R)

Center for Creativity and Change

The Center for Creativity and Change, directed by John McCarthy, held two workshops for counselling professionals. Dr. Robert Wubbolding presented *Individual Counseling and Group Work in Reality Therapy* and discussed reality therapy, working with difficult clients, techniques for increasing group cohesion, and self-evaluation with clients. On February 26, Dr. Sam Gladding presented *Creativity and the Creative Arts Counseling* and discussed how creativity and the creative arts have been used in counselling and counselling related activities. Dr. Gladding demonstrated how the visual arts and music can be used in counseling and the promotion of mental health throughout the life span.

The Child Study Center

The Child Study Center, directed by Mark McGowan, serves as a training facility for graduate students in the School Psychology Program and provides a service to children, families, and schools. The primary role of the center is to provide pre-service practicum experience and training in psycho-educational assessment and intervention to school psychology graduate students. The center provides direct service from mid-January to mid-August each year and takes referrals at any time during the year.



IUP STUDENT WORKING WITH CHILDREN IN CHILD STUDY CENTER



IUP STUDENT WORKING WITH CHILDREN IN SPEECH AND HEARING CLINIC

Speech & Hearing Clinic

The Speech and Hearing Clinic, directed by Karen Stein, provides evaluation and treatment services for several different communication disorders. They also provide services to English language learners and hearing screenings for both the university and the regional community of more than 1,000 people of all ages each year. The center also provides closely supervised practical experience for 125 graduate and undergraduate students.

Center for Media Production and Research

The Center for Media Production and Research, directed by Stephanie Keppich, sets the standard for committed communications media students who are dedicated to producing quality media products. By providing access to professional quality equipment and software, students are taught essential tools sought after by industry professionals working in the competitive field of communications media.



COMMUNICATIONS MEDIA STUDENTS WORKING ON LIVE SPORTS BROADCAST

COEET DIVERSITY AND INCLUSION TASK FORCE

Preparing students to interact and communicate in an increasingly diverse world.

In the College of Education and Educational Technology, we recognize that one of our primary purposes as educators and media professionals is to prepare students to interact and communicate effectively in an increasingly diverse and multicultural world as practitioners, scholars, and teachers.

To that end, the COEET and Office of Social Equity is collaborating on the development of a *Diversity and Inclusion Action Plan*. In 2014, a team of COEET faculty, Roger Briscoe (EDSP), Stephan Shaffrath (DVST), and Sibyl West (COUN) and Pablo Mendoza (Social Equity) adapted an instrument (Grieger's Multicultural Organizational Development Checklist) in order to develop a deeper understanding of the current environmental factors that either enhance or deter full participation and to begin a dialogue in the COEET around issues of diversity and inclusion. To extend that initial work, the team grew to include Paula Andrei (CCTPP), Crystal Machado (PSE), Aya Muchtar (COMM), John Mueller (SAHE), and Lisa Price (CSD).

Throughout the coming year, the Diversity and Inclusion Taskforce will engage the COEET Community in conversations in order to expand on the outlines of this plan.

INTERNATIONAL LEADERS IN EDUCATION PROGRAM

The COEET together with the Office of International Education secured a \$185,000 grant from the Department of State's Bureau of Educational and Cultural Affairs for the International Leaders in Education Program (ILEP). Dr. Lara Luetkehans, Dean of College of Education and Educational Technology, and Dr. Michele Petrucci, Associate Vice President for the Office of International Education, co-authored the proposal.

IUP hosted 16 international educational leaders (Fellows) for an immersive professional development experience. The ILEP Fellows came from Bangladesh, India, Kenya, Malaysia, Morocco, Philippines, Tanzania and Uganda.

The ILEP Fellows participated in two academic courses as well as two semester-long workshops delivered by faculty members in the IUP College of Education and Educational Technology; Educational Seminar (taught by Dr. Sue Reig and Dr. Shirley Johnson) and Technology Workshop (led by Dr. George Beiger and Dr. Susan Sibert). The Fellows

engaged in field experiences at Indiana Area High School and Brashear High School in Pittsburgh to gain different perspectives on the American educational system.

The ILEP Fellows program provided a unique opportunity for the Fellows as well as the university and partner high school communities. Students, parents, teachers, professors, staff, and administrators learned from each other and shared different aspects of our countries, including language, culture, politics, education, gender roles and more. Not only did the ILEP Fellows benefit; the ripple effects were extensive. It was a rich experience for the high school students and, of course, the faculty and students at IUP have been enriched through having the ILEP Fellows in their courses and through sharing their perspectives.

It truly was an honor to host the ILEP Fellows through this people-to-people diplomacy effort; it is a step towards increasing awareness and making the world more tolerant.

NEW ADVANCEMENT OFFICER



DAVE MAUDIE

Dave Maudie joined the University Advancement's development team in fall 2015. He is assigned to support the College of Education and Educational Technology full-time. Dave comes to us following a two-decade tenure with the Boy Scouts leading efforts in fund-raising, friend-raising, and volunteer management. A 1987 IUP graduate, he and his wife, Carol, live in Indiana and have five adult children.

Dave spent much of his first year back at IUP assisting the college in defining funding priorities, reengaging friends and alumni of the college, and helping to build the College Advancement Council. You can contact Dave Maudie at 724-357-2243 or dmaudie@iup.edu.

COLLEGE ADVANCEMENT COUNCIL

This year, the college established its first ever, College Advancement Council. The Advancement Council recognizes an individual's commitment to and support of the College and its educational mission. Members of the Advancement Council serve as advisors to the Dean and as advocates and ambassadors for the College. Through attendance and participation at Advancement Council meetings, selected activities throughout the year, and philanthropic support, Advancement Council members demonstrate their volunteer leadership on behalf of the College.



KEVIN BAILEY '86



DONNA GRIFFITH '74



BILL SCHEEREN '68



JEFF WALLER '85



Bonnie Brose '67



Megan Baker '96

MEMBERS NOT PICTURED

Suzanne Lewis '71

Mary Lou Leipheimer '66

We also wish to thank Dr. Donna Micheaux '75 for her service to the College Advancement Council.

PRESENTATIONS

International, National, Regional, and State

- Baker, J. M., Hill, A. L., & Kappel, A.** (2015). Mindfulness Practices in School: How Professionals Reduce Stress, Eastern Educational Research Association Conference: Sarasota, FL
- Bellis, T.J., McCarty, J., Lynch, G., & **Richburg, C.M.** (2015, Nov.). *A new era in CAPD service delivery: Changes in IDEA eligibility, ICD--10, coverage and payment.* Invited presentation by the Auditory/Central Auditory Processing Disorders Convention Committee for the American Speech-Language-Hearing Association's annual conference, Denver, CO.
- Benjamin, M., & Belch, H.** (2016, March). *Learning communities and the success of students with psychiatric disabilities.* Presented at the annual meeting of NASPA: Student Affairs Administrators in Higher Education, Indianapolis, IN.
- Biss, J., & **McGowan, M. R.** (2015, February). *The SB5 composite score in assessment.* A poster presentation at the annual meeting of the National Association of School Psychologists, Orlando, FL.
- Black, L.** & Klock, K. (2015). *Impact of early childhood education on kindergarteners' early literacy skills.* Council for Exceptional Children Division for Early Childhood International Conference, Atlanta, GA.
- Boyer, A., Egan, L. Bicking, M., & **Lowery, J. W.** (2016, May). *Jeanne Clery Act training seminar.* Clery Center for Security on Campus Training Seminar, Philadelphia, PA.
- Boyer, A., **Lowery, J. W.**, & Nickeson, B. (2015, June). *Jeanne Clery Act training seminar.* Clery Center for Security on Campus Training Seminar, Jersey City, NJ.
- Brady, J.** & Potash, J. (2015). The use of mock staffing to teach clinical skills at the undergraduate level. Poster presented at the annual conference of the American-Speech Language Hearing Association: Denver, CO.
- Brady, J. & Price, L.** (2016). *The use of language sample data in clinical decision-making.* Paper presented at the annual conference of the Pennsylvania Speech-Language Hearing Association: Pittsburgh, PA.
- Brady, J.** (2016). *Addressing phonology with English as a second language learners.* Paper presented at the annual conference of the Pennsylvania Speech-Language Hearing Association: Pittsburgh, PA.
- Brady, J.** & Potash, J. (2016). *Teaching clinical problem solving using mock staffings.* Poster presented at the annual conference of the Pennsylvania Speech-Language Hearing Association: Pittsburgh, PA.
- Brady, J.** & Nuske, T. (2016). *Writing skills in two groups of Japanese students.* Poster presented at the annual conference of the Pennsylvania Speech-Language Hearing Association: Pittsburgh, PA
- Brooks, T. P., **Pollard, B. L.**, & Stephens, A. F. (2015, November). *Introducing the mirror: Utilizing reflective practices in clinical supervision.* Presented at the state conference for The Tennessee Counseling Association, Murfreesboro, TN.
- Chambers, D., Fiddner, M., **Pavolik, B.**, & Sternfeld, R. (2016). The birth of a bright idea, part i: The first in a series of video modules for use in teaching undergraduate research methods. Presentation at the 2015 American Political Science Association Teaching and Learning Conference, February 11-14, Portland, OR.
- Chen, Y., **Luetkehans, L.**, & Hsu, P. (2015). Re-envisioning the future: Destination imagination in China, presented at the Association for Educational Communications and Technology Annual Meeting, Indianapolis, IN.
- Colen J.** & McCloskey, A. (2016, April). *Is STEM education a "thing"? The integration of mathematics with other subjects in teacher journals.* Paper presented at the annual meeting of American Educational Research Association, Washington D.C.
- Colen, Y., Navaratna, C, & **Colen, J.** (2015, October). *Power indices and presidential election.* Paper presented at the annual meeting of National Council of Teachers of Mathematics Research Regional Conferences and Exposition in Atlantic City, NJ.
- Dean, G. J.** (2015, Nov.). *Institutional Support for Distance Education Graduate Programs in Adult Education.* Presented at the National Adult Education Conference, American Association for Adult and Continuing Education, Oklahoma City, OK.
- Desmond, K.J.** (2015). ACES Supervision Task Force Initiative. Presented at the Association for Counselor Education and Supervision Conference, Philadelphia, PA.
- Desmond, K.J.** (2015). Building and managing a successful private practice: How to be sustaining in less than one year. Presented at the American Counseling Association Conference, Orlando, FL.
- Dooley, J., **Benjamin, M.**, & Stratton, J. (2016, March). *Future agenda for residential colleges, living learning communities, and other academic-residential partnerships: Recommendations from a national think tank.* Presented at the annual meeting of NASPA: Student Affairs Administrators in Higher Education, Indianapolis, IN.

- Driscoll, M., Donaldson, A., Smaldino, S., Herring, M., **Luetkehans, L.** Persichitte, K., Dousay, T., & Mellish, L. (2015). Walking in their footsteps (or high heels): AECT women discuss the influence of women who have paved the way, a presidential session presented at the Association for Educational Communications and Technology Annual Meeting, Indianapolis, IN.
- Egan, L., **Lowery, J. W.**, & Miller, S. (2016, January). *Jeanne Clery Act training seminar*. Clery Center for Security on Campus Training Seminar, San Diego, CA.
- Eisenhower, T., & **Luetkehans, L.** (2016). Positioning faculty at predominantly undergraduate institutions for success with building a funded research program. Presented at Conference on Undergraduate Research, Tampa, FL.
- Fello, S., & Sibert, S.M.** (2015, October). *Effective communication: Meeting the needs of all stakeholders*. Presentation at the Association of Middle Level Education (AMLE) Annual Conference, Columbus, Ohio.
- Fennimore, B.S.** (2016, April). "A social justice approach to diverse families." Presented at the American Educational Research association annual meeting, Washington DC.
- Flash, L., Pope, R.L., Reynolds, A.L., & **Mueller, J.A.** (2016, March). Initiating and sustaining multicultural change: Lesson and strategies. Presentation at national convention of the American College Personnel Association, Montreal, Quebec.
- Fu, Y., Sibert, S. M., & Wang, J.** (2016, April). Uncovering the factor structure of the ELL Education Self-Efficacy Scale: A preliminary development. Paper presented at the meeting of American Educational Research Association, Washington DC.
- Fu, Y., & Bieger, G.** (2016, April). Nurturing pre-service teachers' multicultural teaching competence: The impact of a cultural immersion program. Paper presented at the meeting of European Teacher Education Network, Portugal.
- Guth, L. J.** (2016). Journey of utilizing group work for a better world: ASGW Fellows presentation. Presentation at the American Counseling Association Annual Convention. Montreal, Quebec, Canada.
- Guth, L. J., & Hoover, S.** (2016). Enhancing group work practice in Malawi: The warm heart of Africa. Presentation at the Association for Specialists in Group Work Conference. Washington, DC.
- Guth, L. J., Asner-Self, K. K., & Clarke, L. K.** (2015). The journey of developing culturally relevant counselling practice in Malawi. Presentation at the Association for Counselor Education and Supervision Convention, Philadelphia, PA.
- Guth, L. J., Asner-Self, K. K., & Chazema, J.** (2015). Progression and prospects of counselling in Africa. Keynote presentation at the Second International Counselling Conference, Malawi, Africa.
- Hill, A. L.** (2015). Supporting Emergent Readers, Archdiocese Learning Differences Professional Development Workshop: Loretto, PA
- Hill, A. L.** (2015). Students with Specific Learning Disabilities: Taking the Transit to Transition, Eastern Educational Research Association Conference: Sarasota, FL
- Hill, A. L., Domaracki, J., Cheskiewicz R.** (2015). Discovery: An Alternative to Traditional School-to-Work Transition Assessments, **Pennsylvania Association of Colleges and Teacher Educators (PACTE)**: Harrisburg, PA
- Hill, A. L. & Shields, M.** (2015). Differentiated Instruction through Technology, Pennsylvania Council of Exceptional Children (PACEC) Conference, PA
- Kappel, A., Colbert, K., Pampena, M., Potts, A., Rush, A., & VanEmburg, W.** (November, 2015). "Peer mentoring programs for university students on the autism spectrum" TED National Conference, Phoenix, Arizona.
- Kappel, A., & Kerry-Moran, K.** (April, 2016). "Is art-making enough? Changing perceptions of art and learning through an artist residency" American Educational Research Association Conference, Washington, DC.
- Kerry-Moran, K. J., McDevitt, T., & Taylor-Davis, S.** (2016, June). *Investing in what faculty want: Funding teaching circle innovation*. at the Teaching Professor Conference in Washington, D.C.
- Kerry-Moran, K. J. & Kappel, A. L.** (2016, April). *Is art making enough? Changing perceptions of art and learning through an artist residency*. Paper presented in the No Easy Road: Preparing Early Childhood Teachers for an Arts Pathway to Educating Diverse Democracies Symposium at the American Educational Research Association Annual Meeting in Washington, D. C.
- Kerry-Moran, K. J.** (2016, April). *No easy road: Preparing early childhood teachers for an arts pathway to educating diverse democracies*. Symposium presented at the American Educational Research Association Annual Meeting in Washington, D. C.
- Kerry-Moran, K. J.** (2016, April). *What happens when the artist leaves? A teacher educator's self-study following an artist residency*. Paper presented at the American Educational Research Association Annual Meeting in Washington, D. C.
- Kleinman, S. B., & Eveland, W. P. Jr.,** (2015, November). Communicating politics without talking: How people infer political preferences using limited visual information. Paper presented to the annual meeting of the National Communication Association in Las Vegas.
- Knickelbein, B. & Black, L.** (2016). *Identification of Early Learning Difficulties*. Council for Exceptional Children Convention and Expo, St. Louis, MO.

- Knickelbein, B., Black, L., Riviello, E., & Walters, A.** (2016). *Identification of Early Learning Difficulties*. National Association of School Psychologists Conference, New Orleans, LA.
- Knickelbein, B.** *Current Issues in Special Education*. Penn State University, Altoona Campus, October 9, 2015.
- Knickelbein, B.** *Gender and Special Education*. Penn State University, Altoona Campus, October 9, 2015.
- Knies, D., **Benjamin, M.**, & Boettcher, M. (2016, March). *Administrator-faculty transitions: Same goal, different paths*. Presented at the annual meeting of NASPA: Student Affairs Administrators in Higher Education, Indianapolis, IN.
- Kovaleski, J. F., Costello, R., & Olson, M.** (2016, February). *Implementing Data Analysis Teams to Evaluate Behavior Infractions in Alternative Education*. Paper presented at the National Association of School Psychologists Convention, New Orleans, LA.
- Kovaleski, J. F., Ragno, O., Rogers, J., & Olson, M.** (2016, February). *Evaluating the Treatment Integrity of Data Analysis Teams*. Poster presented at the National Association of School Psychologists Convention, New Orleans, LA.
- Leidman, M. B., Kleinman, S. B., & Brown, T. J.** (2016, April). Examining changing patterns of grading in American higher education. Paper accepted for presentation at the annual meeting of the European Teacher Education Network in Setubal, Portugal.
- Leidman, MB., Brown, TJ,** Wilson, L. "The Impact of the Growing Digital Divide and Changing the Traditional Communications Model" April, 2016, European Teacher Education Network Annual Conference, Setubal, Portugal
- Leidman, M.B., Brown, T.,** Wilson, L. "*The Digital Division Among Generations: How Communications Models Affect Digital Immigrants, Natives and Transitionals*" November, 2015, National Communications Association Convention, Las Vegas, NV
- Leidman, M.B., Brown, T.,** Wilson, L. "At the Crossroads: Redefining Message Design in the 21st Century" October, 2015 Partnership for Progress on the Digital Divide 2015 International Conference Phoenix, AZ
- Lombard, L., Howse, A., Laughlin, A., Azeles, L., Bodenlos, Grahek, K., Gratzmiller, H., M., Hynson, J., Mack, M., Yates, L.** (2015). Strength of LDDK productions in adults. Poster presented at the American Speech-Language Hearing Association Convention. Denver, CO.
- Longwill, D. A., **Runge, T. J.,** Staszkiwicz, M. J., & Streyle, K. (2016, February). *Early adoption of SWPBIS*. Poster presented at the annual meeting of the National Association of School Psychologists, New Orleans, LA
- Lowery, J. W.** (2016, April). *Congress, the U.S. Department of Education, and statehouses: Legislative update for student affairs professionals*. Mississippi State University Legal Issues Conference, Starkville, MS.
- Lowery, J. W.** (2016, April). *Guns on campus: Campus policies, state laws, and the courts*. Mississippi State University Legal Issues Conference, Starkville, MS.
- Lowery, J. W.** (2016, March). *Freedom of (and from) speech on campus in the social media age*. NASPA Conference, Indianapolis, IN.
- Lowery, J. W., & Lewis, W. S.** (2016, March). *Sexual assault and student affairs: Balancing competing demands*. NASPA Conference, Indianapolis, IN.
- Lowery, J. W.** (2016, February). *Legislative update*. ASCA Annual Conference, St. Pete Beach, FL.
- Lowery, J. W.** (2015, October). *Making sense of the Fair Campus and Safe Campus Acts*. AFA AdvanceU Webinar.
- Lowery, J. W.** (2015, July). *Federal mandates and the administration of student conduct*. A Foundation for Professional Practice in Student Conduct Administration, ASCA Donald D. Gehring Academy for Student Conduct Administration, Indianapolis, IN.
- Lowery, J. W.** (2015, June). *Federal mandates and the administration of student conduct*. A Foundation for Professional Practice in Student Conduct Administration, ASCA Donald D. Gehring Academy for Student Conduct Administration, Berkeley, CA.
- Luetkehans, L., & Yamagata-Lynch, L.** (2015). Teacher education panel: Inquiry in teacher education world café, presented at the Association for Educational Communications and Technology Annual Meeting, Jacksonville, FL.
- Marcoline, J.F., & Lehman, D.** (2016, February). A Case Study Describing How Servant Leadership Attributes Impact Superintendent Longevity and Leadership Styles, Paper Presentation, Eastern Education Research Association Conferences, Hilton Head, SC.
- Marshak, L.** and Williams, C. (2015, August 20). Helping Fathers: Initial impact and adaptation over time. 12th World Down Syndrome Congress. Chennai, India.
- Marshak, L. E.** and Prezant, F. (2016, January 16). Making it work in your family. Skills of Central PA/ State College, PA
- Marshak, L. E.** (2015, November, 13). Keynote address. Married with Special Needs Children. Marriage Matters Jackson. Jackson, FL.
- McCarthy, J.** (October, 2015). Water the seeds, not the weeds: Solution-focused creativity and creative problem-solving. Presented at the Symposium of the Singapore Association of Counselling, Singapore.

- McCloskey, A. & **Colen, J.** (2016, April). *How do teacher journals integrate mathematics with other subjects?* Poster session presented at the annual meeting of National Council of Teachers of Mathematics Research Conference, San Francisco.
- McGowan, M. R.** (2015, February). *School violence: Assessing threats and managing risk.* A mini-skills workshop presented at the annual convention of the National Association of School Psychologists, Orlando, FL.
- McLeod, K., Levert, B., Smith, C., Parks, L. & **Lenze, J.S.** (2016, April 29). Student perceptions of online political media. Paper presented at the Laurel Highlands Communications Conference, Indiana, Pennsylvania.
- Migyanka, J.** & Venkat, A. *Care of Individuals with Autism Spectrum Disorder During Disasters and Times of Crisis.* Lancaster County Public Safety Training, April 20, 2016, Manheim, Pennsylvania.
- Migyanka, J.** & Venkat, A. *Care of Individuals with Autism Spectrum Disorder During Disasters and Times of Crisis.* Autism Services, Education, Resources and Training Webinar, Pittsburgh, PA, March 14, 2016
- Migyanka, J.** & Laverick, D. *Sparking Creativity and Literacy through Children's Literature.* 50th Convocation of Kappa Delta Pi, Orlando, FL. October 22-24, 2015.
- Migyanka, J.** & Venkat, A. *Autism Awareness for the First Responder Training.* Sullivan County ERCC, September 30, 2015 Laporte, Pennsylvania.
- Migyanka, J.** & Venkat, A. *Care of Individuals with Autism Spectrum Disorder During Disasters and Times of Crisis.* 2015 Disaster Human Services Training Conference, August 12-13, 2015, West Chester, Pennsylvania.
- Migyanka, J.** (2015, August) *Student Populations.* Penn Highlands Community College Adjunct Faculty Institute.
- Morey, A.C., **Kleinman, S. B.**, & Boukes, M. (2016, August). Talking Politics: Discussion Partner and Group Preferences. Under Review at *AEJMC*. Paper accepted to the annual meeting of the National Communication Association in Philadelphia.
- Ortiz, A.V.** (2015). Undocumented identity storytelling: (Re)framing public relations. Paper competitively selected by the La Raza Caucus, National Communication Association Annual Convention, Las Vegas.
- Paquette, K., & Sibert, S.M.** (2015, October). *Flexible grouping*, Poster presentation, Biannual Convocation of Kappa Delta Pi (KDP), Orlando, FL.
- Parks, C., Lux, D., Owoc, S., Sanders, L., & **Lenze, J.S.** (2016, April 29). Student perceptions of the effects of video games on health. Paper presented at the Laurel Highlands Communications Conference, Indiana, Pennsylvania.
- Peace, H. S., & **Runge, T. J.** (2016, May). *Relationship between high fidelity school-wide positive behavioral interventions and supports and out-of-school placements.* Poster presented at the annual meeting of the Pennsylvania Positive Behavioral Supports Implementers' Forum, Hershey, PA.
- Piwinsky, M., Pavolik, B.,** Fulton, L., and **Leidman, M.B.** (2016). Perpetual Professor Revisited: Faculty-Student Communication outside the Classroom Space. *Annual Proceedings for the Society of Information Technology and Teacher Education Conference.* Savannah, Georgia.
- Pollard, B. L.,** & Stephens, A.F. (2015, October). *Grief has many faces: A case study on fusing culture and service learning within counselor education.* Presented at the national conference for the Association for Counselor Education and Supervision, Philadelphia, PA.
- Pollard, B. L.** (2015, November). *The influence of experiential small groups on counseling students' group work training.* Presented at the state conference for the Pennsylvania Counseling Association, State College, PA.
- Pollard, B. L.,** Diambra, J. F., & Stephens, A. F. (2015, November). *The influence of experiential small groups on counselors' group work training.* Presented at the state conference for the Tennessee Counseling Association, Murfreesboro, TN.
- Price, L.H.** (2016, April). Social interactionist treatments for students with autism: Core principles and treatment strategies. Invited presentation for speech-language pathologists in southern South Dakota, Mitchell, SD.
- Price, L.H.** (2016, April). Using interactive talk about books to achieve language treatment goals. Invited presentation for speech-language pathologists in southern South Dakota, Mitchell, SD.
- Price, L.H.** (2016, April). Social interactionist treatments for students with autism. Invited presentation for the DaFeat Autism group, DuBois, PA
- Puig, A., Hutchins, A. M., Monteiro-Leitner, J., Skudrzyk, B., Bemak, F., Chung, R. C., **Guth, L. J.,** Ibrahim, F., Macuch, R., Majuta, A., & Rybak, C. (2016). International perspectives on group work: Practice, teaching, and research. Presentation at the Association for Specialists in Group Work Conference. Washington, DC.
- Rescinito, M. E., Walters, A., & **Runge, T. J.** (2016, February). *Improving school climate: Using SWPBIS to improve student behavior.* Poster presented at the annual meeting of the National Association of School Psychologists, New Orleans, LA.
- Richburg, C.M.** (2016, June). Fracking noise and lights: Impacts on local residents. Oral presentation for the "Health and Shale Gas Development: State of the Science Conference" hosted by the Southwest Pennsylvania Environmental Health Project, Pittsburgh, PA

- Richburg, C.M.** (2016, March). Environmental noise and its effects on health and well-being. Oral presentation for the Moms Clean Air Force at the Mars, PA Public Library, Mars, PA.
- Richburg, C.M.** (2015, November). *Public health concerns caused by “fracking” noise*. Oral presentation at the “Shale and Public Health Conference” at the University of Pittsburgh, hosted by the League of Women Voters and the Pitt Graduate School of Public Health, Pittsburgh, PA.
- Richburg, C.M.** (2015, Mar.). Invited panelist in the Grand Rounds: CAPD at the 2015 AudiologyNOW! convention of the American Academy of Audiology, San Antonio, TX.
- Richburg, C.M.** (2015, Mar.). *Noisy rooms: Why audiologists must ask, “Can you hear me now?”* Student Educational Session at the 2015 AudiologyNOW! convention of the American Academy of Audiology, San Antonio, TX.
- Robertson, S.** (2016). *Meeting the Literacy Challenge*. Invited Speaker. Kentucky Speech-Language-Hearing Association. Lexington, KY
- Robertson, S.** (2016). *Read with Me! Collaborative Strategies for Facilitating Early Language and Literacy*. Invited Speaker. Kentucky Speech-Language-Hearing Association. Lexington, KY
- Robertson, S.** (2016). *Optimizing Work Environments for SLPs*. Invited Speaker, Long Island Speech-Language-Hearing Association. Long Island, NY.
- Robertson, S.** (2016). *Raising Readers. Building Language and Emergent Literacy Skills*. Invited Speaker for the Colorado Department of Education. Anschutz Medical Center, University of Colorado, Denver, CO.
- Robertson, S.** (2016). *Dealing with Difficult People*. Key Note Speaker. Indiana Speech-Language-Hearing Association, Indianapolis, IN.
- Robertson, S.** (2016). *Stress Free Strategies Building Better Readers*. Invited Speaker. Indiana Speech-Language-Hearing Association, Indianapolis, IN.
- Robertson, S.** (2016). *Read with Me!* Invited Speaker. Speech and Hearing Association of Virginia. Chantilly, VA.
- Robertson, S.** (2015) *Read with Me! Stress-Free Strategies for Raising Readers*. Invited Speaker. Speech and Hearing Association of Virginia. Chantilly, VA.
- Robertson, S.** (2016). *Language and Literacy: Building Better Readers*. Invited Speaker. Bucks County Intermediate Unit. Doylestown, PA.
- Robertson, S.** (2016). *Smart Start: Business Planning for Success*. Pennsylvania Speech-Language-Hearing Association
- Robertson, S.** (2015). *Developing Language and Literacy: Strategies for the SLP*. 2 Day Invited Seminar. Stuttgart, Germany. US Department of Defense.
- Robertson, S.** (2015). *Becoming a Change Agent: Collaborative Partnerships*. Presence Learning SPED AHEAD webinar series.
- Robertson, S.** (2015). *Reading Across the Curriculum: Building Strong Readers*. Invited Speaker. Georgia Speech Language Pathologists in the Schools Best Practices Conferences, Atlanta, GA
- Schaffrath, S.** (2016). What can developmental educators learn from chaos theory? *Annual Conference of the Pennsylvania Association of Developmental Educators*. http://www.pade-pa.org/wp-content/uploads/2011/04/PADE_2016_Conference_Program_Final_3_25.pdf.
- Sibert, S. M.** (2016, April). *A Transition from paper to paperless supervision*. Presentation at the National Student Teacher and Supervision Conference (NSTSC), West Chester, PA.
- Sibert, S. M.** (2016, April). *Bilingual language acquisition*. Invited lecturer in ECED 250 Language Development at Indiana University of Pennsylvania, Indiana, PA.
- Sibert, S. M.** (February, 2016). *Use of tablets in student teacher supervision: Modeling the effective use of technology*. Poster Session at the Eastern Educational Research Association (EERA) Annual Conference, Hilton Head Island, SC.
- Sibert, S.M., & Fello, S.** (2015, October). *Book talks to ignite the love of reading*. Presentation at the Association of Middle Level Education (AMLE) Annual Conference, Columbus, Ohio.
- Sibert, S.M.** (2015, October). *Is taking a student teacher right for me?* Presentation at the Association of Middle Level Education (AMLE) Annual Conference, Columbus, Ohio.
- Sibert, S.M., & Henderson, T.** (2015, October). *Using wikis to enhance instruction in higher education*. Presentation at Indiana University of Pennsylvania, Center for Teaching Excellence, Reflective Practice, Indiana, PA.
- Stephens, A. F., & Pollard, B. L.** (2016, April). *Counselor wellness: Promoting mental health career sustainability*. Presented at the international conference for the American Counseling Association, Montreal, Quebec.
- Stiegler, Z.** (2015, November). Demonstration and disavowal: Ecological tensions in the #BlackLivesMatter movement. Paper presented at the meeting of the National Communication Association, Las Vegas, NV.

- Streyle, K. R., **Runge, T. J.**, Staszkiwicz, M. J., & Longwill, D. A. (2016, May). *SWPBIS: Office discipline referral triangle data*. Poster presented at the annual meeting of the Pennsylvania Positive Behavioral Supports Implementers' Forum, Hershey, PA.
- Streyle, K. R., **Runge, T. J.**, Staszkiwicz, M. J., & Longwill, D. A. (2016, February). *SWPBIS: Implementation level and office discipline referrals*. Poster presented at the annual meeting of the National Association of School Psychologists, New Orleans, LA.
- Terng, E.M., Boldy, J., Chevalier, M., Little, J., Nicholson, S. & **Lenze, J.S.** (2016, April 29). Student perceptions on usability of user-centered web design. Paper presented at the Laurel Highlands Communications Conference, Indiana, Pennsylvania.
- Walters, A. M., Rescinito, M. E., & **Runge, T. J.** (2015, October). *Improving school climate: Using SWPBIS to improve student behavior*. Poster presented at the annual Association of School Psychologists of Pennsylvania Conference, State College, PA.
- Watt, S.K., Dugan, J., Erkel, S. Kilgo, C.A., **Mueller, J.A.**, & Turner Kelly, B. (2016, March). Designing transformative multicultural initiatives: Theoretical foundations, practice, and facilitator considerations. Presentation at national convention of the American College Personnel Association, Montreal, Quebec.
- Wilson, B.G. and Piraino, A.B.** (2015). Social Exchange Theory, Feminine Behavior and the Upstairs Tradition on *Downton Abbey*. Paper Presentation. Popular Culture Association & American Cultural Association Annual Convention, New Orleans, LA.

PUBLICATIONS

Books

- Jalongo, M. R. & **Machado, C.** (2016). *Making Effective Presentations at Professional Conferences: A Guide for Teachers, Graduate Students, and Professors*, New York, NY: Springer.
- Leidman, MB.**, Binder, S. (2016) "26" *THE MOVERS AND SHAKERS OF VARIETY TELEVISION*. Dubuque, Iowa. Kendall-Hunt Publishing.
- Pollard, B. L.** (2016). Peer-to-peer dialogue: Tamika. In Woodside, M., *Empowering human service students in their field experiences: Helping students find their way*. Thousand Oaks, CA: Sage Publications, Inc.
- Price, L.H.** & Bradley, B.A. (2016). *Revitalizing read alouds: Interactive talk about books with young children, PreK-2*. New York, NY: Teachers College Press.
- Robertson, S.** (2015) *Read with Me! (2nd Edition)*. *Stress-Free Strategies for Building Language and Literacy*. Dynamic Resources: Indiana, PA.
- Robertson, S.** (2015) My Cow Can Bow (therapy materials). Dynamic Resources, Indiana, PA.

E-Books

- Leidman, M.B.**, **Brown, T.**, Wilson, L. "Traversing the Digital Divide: Analyzing Technology's Effect on the Generation Gap through Message Design and Processing" October, 2015 *Partnership for Progress on the Digital Divide 2015 E-Book*.
- McCarthy, J.** (along with Lake, M.). (2016). *Driving Forward in Reverse*. Greensboro, NC: NBCC Foundation.

Book Chapters

- Colen, Y., **Colen, J.**, & Kim, J. (2015). The common core mathematics standards and implications for the South Korean curriculum. In J. Kim, I. Han, M. Park, & J. Lee (Eds.), *Mathematics Education in Korea: Contemporary Trends in Researches in Korea* (pp. 191-232). Hackensack, NJ: World Scientific Publishing Company.
- Ellis Weismer, S. Venker, C.E. & **Robertson, S.** (2015) Focused Stimulation. Focused stimulation. In R. McCauley and M. Fey (Eds.) *Treatment of language disorders in children: Conventional and controversial approaches*. Baltimore: Paul H. Brookes.
- Laverick, D. M.** (2015). Teaching with technology and interactive media to promote creativity and arts-based learning in young children. In K. L. Heider & M. R. Jalongo (Eds.), *Young children and families in the information age* (pp. 61-75). Dordrecht, Netherlands: Springer.
- Lowery, J. W.** (2016). Addressing legal and risk management issues. In G. McClellan & J. Stringer (Eds.), *The handbook of student affairs administration* (4th ed., pp. 535-560). San Francisco, CA: Jossey-Bass.
- Machado, C** & Smith, J. A. (2015). The American educational experiences in a predominantly white community: Perspectives of international students. In J. A. Aiken, L. Flash, W. Heading Grant, F. Miller (Eds.), *Theory to Practice: Fostering Diverse and Inclusive Campus Environments*, (pp. 149-164). Radford, VA: NCEA Publications.
- Runge, T. J.**, Lillenstein, D. J., & **Kovaleski, J. F.** (2016). Response to intervention and accountability systems. In S. R. Jimerson, M. K. Burns, & A. M. VanDerHeyden (Eds.), *Handbook of response to intervention: The science and practice of multi-tiered systems of support* (2nd ed., pp. 103-120). New York, NY: Springer Science.

Journal Articles

- Benjamin, M.**, & Davis, L. (2016). "What haven't I learned?" Learning resulting from the resident advisor role. *Journal of College and University Student Housing*, 42(3), 12-25.
- Bruno, M.**, **McCarthy, J.**, & Kramer, C. (2015). Mental health literacy and depression among older adolescent males. *Journal of Asia Pacific Counseling*, 5 (2), 53-64.

- Dean, G. J.** (2015). Review of: Yoncheva, Yuliya, Wise, Jessica, & McCandliss, Bruce. (2015, June-July). Hemispheric specialization for visual words is shaped by attention to sublexical units during initial learning. *Brain and Learning*. Vol. 145-146, 23-33. Published in the Research Digest column for the *Commission on Adult Basic Education (COABE) Journal of Research and Practice in Adult Literacy, Secondary, and Basic Education*. (2015, Winter). 4(3), pp. 65-68.
- Desmond, K.J.**, Kindsvatter, A., Stahl, S., & Smith, H. (2015). Using creative techniques with children who have experienced trauma. *Journal of Creativity in Mental Health*, 10(4), 439-455.
- Diambra, J., Pollard, B. L., Gamble, R. M., & Banks, B. P. (2016). Teaching a human sexuality course: What are counseling students thinking? *American Journal of Sexuality Education*, 11(1), 76-91. doi: 10.1080/15546128.2016.1141737
- Dirsmith, J. K., & **Runge, T. J.** (2015). A matched comparison study of the impact of school-wide positive behavioral interventions and supports on academic growth. *Pennsylvania Educational Leadership*, 34(2), 6-24.
- Fowler, A.I., & **Mueller, J.A.** (2015). The correlation between feminist identity development and psychological maltreatment in intimate relationships among college students. *Journal of Student Affairs Research and Practice*, 52(3), 327-340.
- Guth, L. J.**, Lorelle, S., Hinkle, J. S., & Remley, T. (2015). Development and implementation of an international counseling outreach effort in Bhutan: A group stage conceptualization. *Journal for Specialists in Group Work*, 40, 22-37.
- Kerry-Moran, K.J.** (2015). Improving preservice teachers' expression in read-alouds. *Early Childhood Education Journal*. Advance online publication. Doi: 10.1007/s10643-015-0742-1
- Kleinman, S. B.**, (2016). Willingness to Communicate About Politics (WTCAP): A novel measure of interpersonal political discussion. Accepted for publication at *Studies in Communication Sciences*.
- Kleinman, S. B., Kleinman, E. M.**, (2016). Is that a hand up or is it a new post? Examining differences in motivations to participate in online and offline classroom discussion. *Journal of Communication Media Studies*.
- Leidman, MB.** "**Variety Television Unveiled**" (2015) The Caucus Journal ,6-1. http://www.caucus.org/news/vol6no1/15spr_variety.html
- Machado, C., & Laverick, D. M.** (2015). Technology integration in K-12 classrooms: The impact of graduate coursework on teachers' knowledge and practice. *The Journal of Technology and Teacher Education*, 23(1), 79-106.
- Marshak, L.** (2015). Going solo: Shaping your life as a single parent of a child on the spectrum. *The Autism File*, 10/11(64), 26-29.
- Marshak, L.**, Williams, C. (2016). Väders zuhören. *Leben mit Down-Syndrom*, 1(81), 20-21. Translation: Listening to fathers. *Living with Down Syndrome*. 1(81), 20-21.
- McGowan, M. R.**, & Guyett, I. P. R. (2016). Assessing violence risk. *The Pennsylvania Psychologist*, 76(3), 32-33.
- McGowan, M. R.** (2016). The importance of adopting an ecological framework for addressing school violence. *The Pennsylvania Psychologist*, 76(3), 37-38.
- McGowan, M. R., Runge, T. J.**, & Pederson, J. A. (2016). Using curriculum based measures for identifying gifted learners. *Roeper Review*, 38, 93-106. doi: <http://dx.doi.org/10.1080/02783193.2016.1150376>
- McGowan, M. R., Holtzman, D. R., Coyne, T. B., & Miles, K. L.** (2016). Comparing The Gifted Composite and Full Scale IQ score for evaluating gifted students. *Roeper Review*, 38, 40-49. doi:10.1080/02783193.2015.1112864
- Millward, R.** (2016). Why retain a supervision model form the 1860s?. *The School Administrator*. April. pp. 15-15.
- Murray, K., **Desmond, K. J.**, & Parmanand, S.P. (2015). The impact of counselor education training on student-parents. *Journal of the Pennsylvania Counseling Association*, 14(2), 71-78.
- Pavolik, B., Piwinsky, M.** and Fulton L. (2015). News Crawls in Local TV News: Do They Help or Hinder Information Recall and Retention? *Advances in Journalism and Communication*, Volume 3, Number 4, December.
- Schaffrath, S.** (2016). Obsession and metamorphosis in two first-person infantryman narratives. *The Midwest Quarterly*, 57, 288-305.
- Schaffrath, S.** (2016). William Golding's *The Spire* as an architectonic novel. *Clcweb: Comparative Literature & Culture: A Wwweb Journal*, 18(1). <http://docs.lib.purdue.edu/clcweb/vol18/iss1/>.
- Stewart, M. and **Wilson, B.G.** (2016). The Dynamic Role of Social Media during Hurricane #Sandy: an introduction of the STREMI model to weather the storm of the crisis lifecycle. *Computers in Human Behavior*, 54, 639-646.
- Venkat, A., **Migyanka, J. M.**, Cramer, R. & McGonigle, J. J. (2016). An instrument to prepare for acute care of the individual with Autism Spectrum Disorder in the emergency department. . *Journal of Autism and Developmental Disorders*, online first. NY: Springer. DOI 10.1007/s10803-016-2778-5
- Wang, D.** (2016). Reflective practice: Two essentials and three applications. *Journal of European Teacher Education Network*. 11 133-141.

Wang, P., & Machado, C. (2015). Meeting the needs of Chinese English language learners at writing centers in America: A proposed culturally responsive model. *Journal of International Students*. 5(2), 143-160

Wissinger, C. and Wilson B.G. (2015). Student Perceptions of Facebook's Privacy Policies & Rights. *Journal of Social Media Studies*, 2 15-26.

Wissinger, D. & Knickelbein, B. (2016) . Historical Literacy Instruction for Struggling Readers and Writers: A Review of the Research. *Reading and Writing Quarterly*. Manuscript submitted for publication.

Newsletters

Kovaleski, J. F., Lichtenstein, R., Naglieri, J., Ortiz, S. O., Klotz, M. B., & Rossen, E. (2015). Current perspectives in the identification of specific learning disabilities. *Communicative*, 44(4), 4-6.

Streyle, K. R., Runge, T. J., Staszkievicz, M. J., & Longwill, D. A. (2015, November). Can we sustain encouraging discipline data? *PAPBS Network Newsletter*, 1-2.

Paper

Fennimore, B. (2016). Say that the river turns: social justice intentions in progressive public school classrooms. *Bank Street Occasional Paper Series 35*. Retrieved from: bankstreet.edu/occasional-paper-series/35/

Editorships

Dean, G. J. (Ed.). (2016, Feb.). *PAACE Journal of Lifelong Learning*. Pennsylvania Association for Adult Continuing Education.

Grants

Pilot Project for Degree Completion of ASD Students. \$5,000 award from the Lancaster Lebanon Intermediate Unit 13/PASSHE, July 1, 2015- June 30, 2016 **Joann Migyanka**, Co-Project Director with **Dr. Becky Knickelbein**.

Focus of project: The establishment of an enhanced support center for college age students with high functioning autism.

Autism, Services, Education, Resources and Training (ASERT) Collaborative. \$5,000 award from the Pennsylvania Bureau of Autism, ASERT April 30, 2015- June 30, 2016 **Joann Migyanka**, Project Director.

Focus of project: Dissemination and training sessions for the ACT Training DVD and Manual for emergency department physicians and personnel and first responders when treating people with autism in the Emergency Department.

IREX International Leaders in Education Program (ILEP). 2015 Monetary Award: \$185,000. **Lara Luetkehans**, Principal Investigator, Michele Petrucci, Co-Principal Investigator.

Black, L. (2015). Evergreen Boys & Girls Clubs and ARIN Intermediate Unit; *Evaluation of the Evergreen Boys & Girls Clubs of Indiana County (Homer Center, Purchase Line, United, and Penns Manor)* (\$10,000)

Black, L. (September 2015-May 2016). Indiana County Head Start; *Indiana County Mental Health Consultation Service* (\$3500)

Knickelbein, B. *Identifying Early Signs of Learning Difficulties*, \$693 award from the University Senate Research Committee, April, 2016.

Sibert, S.M., (2015-2016). *From Paper to Paperless Student Teaching Supervision: It's Time* Academic Computing Policy and Advisory Committee (ACPAC) Grant. Indiana University of Pennsylvania, \$2685

Sibert, S.M., (2015-16). *Little Free Libraries: Promoting Community Literacy*. Highlander Foundation Teacher Grant. Cambria Heights School District, Patton, PA, \$500

Technical Reports

Runge, T. J., Staszkievicz, M. J., Longwill, D. A., & Streyle, K. R. (2015). *Pennsylvania school-wide positive behavioral interventions & supports: 2014-2015 executive summary*. Unpublished technical report, Department of Educational and School Psychology, Indiana University of Pennsylvania, Indiana, PA.

Runge, T. J., Staszkievicz, M. J., Longwill, D. A., & Streyle, K. R. (2015). *Pennsylvania school-wide positive behavioral interventions & supports: 7th annual summary of implementation and effects on PAPBS network schools in years 2006-2015*. Unpublished technical report, Department of Educational and School Psychology, Indiana University of Pennsylvania, Indiana, PA.

Essays

Lowery, J. W. (2015). Law and policy issues. In A. Tull, L. Kuk & P. Dalpes (Eds.), *The handbook for student affairs in the community college* (pp. 120-140). Sterling, VA: Stylus.

Annual gifts impact every life at IUP, sustaining the quality of our academic programs, supporting our faculty, and ensuring adequate financial aid for all students.

Endowed and capital gifts create a legacy of ongoing support for IUP. They provide for the construction and renovation of buildings, and fund endowments for students and academic needs.

Planned gifts allow you to maximize your assets, make larger gifts than you may otherwise have thought possible, and ensure a strong future for IUP.

For more information, please visit,

<http://www.iup.edu/supportiup>, or contact us at:

IUP College of Education and Educational Technology

Office of the Dean

724-357-2480

coeet-info@iup.edu

