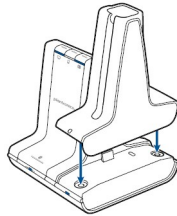
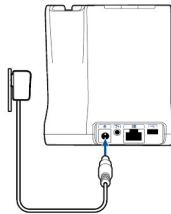


Charge Your Headset

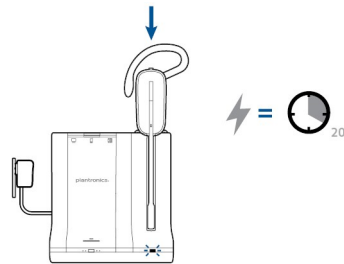
- 1 Align the charging cradle pins with the base and press firmly until the cradle rests evenly on the base.



- 2 Plug one end of power supply into power jack on back of the base and other end into working power outlet.



- 3 Place the headset in the charge cradle. The charging LED will flash green when charging the headset and turn solid green when the headset is fully charged. Charge for at least 20 minutes prior to the first use. A full charge takes 3 hours.



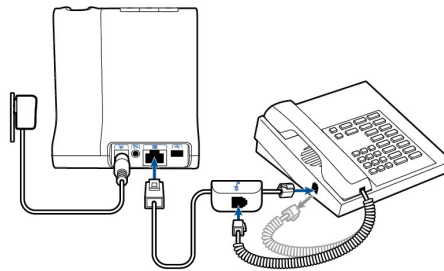
NOTE This product has a replaceable battery. Use only the battery type supplied by Plantronics.

Desk Phone: Connect and Call

Choose Desk Phone Setup

Choose a desk phone setup **A**, **B** or **C** and connect cables.

A Desk phone (standard)

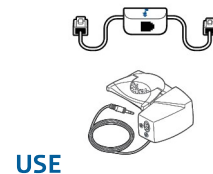
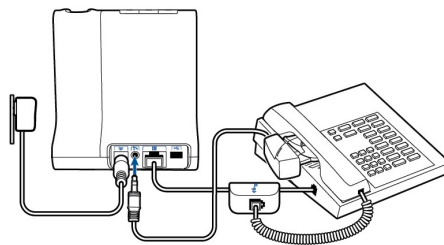


- Connect one end of the telephone interface cable to the back of the base
- Disconnect the handset coil cord from the base of the desk phone and re-connect it to the telephone interface cable junction box.
- Finally connect the remaining end of the telephone interface cable into the open handset port on the desk phone.

NOTE If your phone has a built-in headset port, you should only use the headset port if you will not be using the HL10 lifter. In this configuration, you must press both the headset button on your phone and the call control button on the headset to answer or end calls.

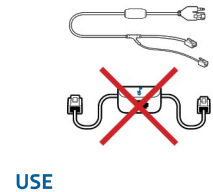
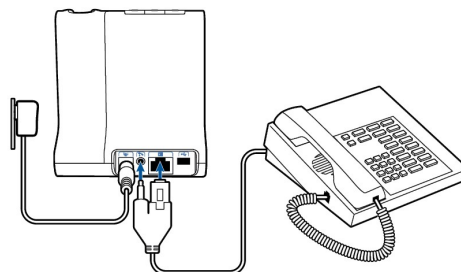
B Desk phone + HL10 lifter (sold separately)

See the user guide at plantronics.com/accessories for details.

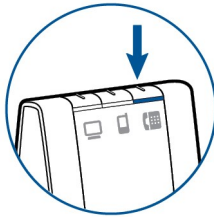


C Desk phone + EHS cable (sold separately)

See the user guide at plantronics.com/accessories for details.

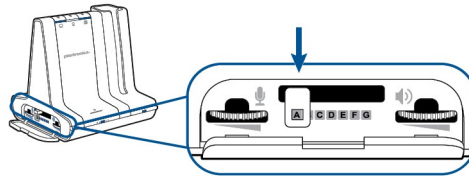


- Make a Desk Phone Call** 1 While wearing headset, short press base desk phone button.



NOTE If you don't have remote call control through a lifter (HL10) or cable (EHS), manually remove desk phone handset before each call.

- 2 If you do not hear a dial tone, open side panel and adjust middle configuration switch **A-G** until you do. Default setting **A** works for majority of desk phones.



- 3 Dial test call from desk phone.
4 End call by pressing headset call control button.

