

Configuring Mac OSX for an Ethernet Connection



Note: *These instructions assume you already have an Ethernet Adapter of some type installed and tested for your Macintosh. IUP Staff are not allowed inside student Machines so we cannot install the card for you.*

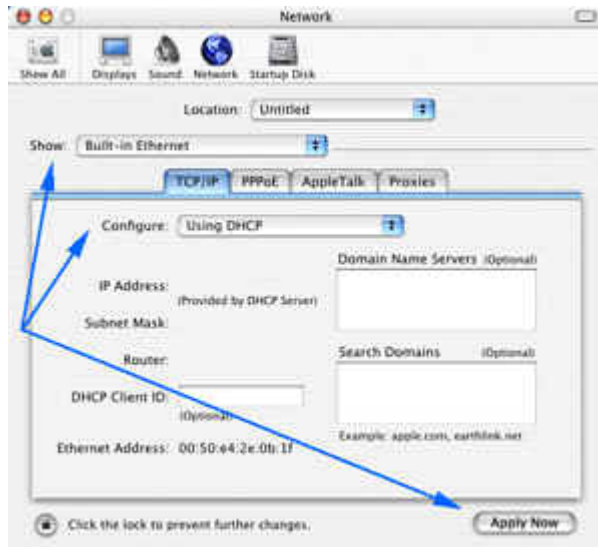
1. Select the **System Preferences** button on the dock:



2. Select the **Network** button:



3. Under **Configure**, select **Built-in Ethernet**.



- In the **Configure** field inside the **TCP/IP** window, select **Using DHCP**
- The **IP Address** field will be automatically configured
- Leave the **DHCP Client ID** field blank
- In the **Search Domains** field, enter **iup.edu**
- Click **Proxies** and then select the **Automatic Proxy Configuration** checkbox.
- Enter **http://web-proxy.iup.edu/config.pac** the address in the URL field.

4. Click **Save** to finish the configuration.

Note: Often Mac OSX computers cannot access the registration page. If you need your Mac OSX computer registered and cannot get to the registration page via your web browser, please call the RESNET helpdesk at 357-2596.