



# ResNet Setup Guide

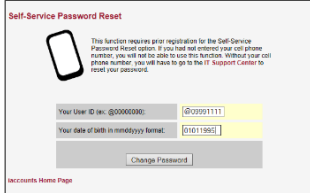
**We ask that you use the wired network when you are in your room/suite and setup near a network jack to free up the wireless network for non-wired devices such as tablets and smart phones.**

IUP requires you to authenticate using 802.1x to get online. You will need to know your 4 letter IUP network username and network password to proceed with setting up your wired connection. This is the same information that you use to access the MyIUP website. If you don't know your IUP network username and network password, you can look them at <http://iaccounts.iup.edu>. If you have a smart phone you can look this information through its browser. This service does require a pre-registration of your cell phone which you should have setup when you first looked up your information or at orientation.

If you don't remember your account information or your network password has expired browse to <http://iaccounts.iup.edu> and choose **Forgot your IUP network password/Reset your IUP network password**. Enter your Banner id (with the "@" sign) as your USER ID, your birthday in mmdyyy format (no dashes or slashes) and click **Change**



**Password.** You will be prompted to verify the last 4 digits of your cellphone number. Once you confirm your number you will be sent a text message with a code. You will be prompted for that code on the website to continue. Once you enter your code your account information will be listed and you will have the option to set your



network password.

If you did not setup a cellphone in the system and you need to change your network password you will need to contact the IT Support Center to get your network password changed. The IT Support Center is located in Delaney Hall and you can enter via the courtyard.

## IT Support Center Hours Fall 2015 Opening

Normal hours 17<sup>th</sup> through the 21<sup>nd</sup>, 8am to 4:30pm  
Saturday the 22<sup>nd</sup> and Sunday the 23<sup>th</sup>, 10am to 4pm  
Monday the 24<sup>th</sup> through Friday the 28<sup>th</sup>, 8am to 5:30pm

## For Wireless Network Setup (first step)

Choose the **iconnect** wireless network. Follow the steps in the Right column to finish your wireless setup. ->

## For Wired Network Setup (first step)

- Locate the **Network Interface Controller (or NIC)** on your machine
- Get a category 5e or 6 network cable (**NOT A PHONE CABLE**)
- Plug into a network port

## Where to plug in your network cable:

If you live in one of the **Suites** any port that ends with and "A" (ex: 123-AA, 124A-BA, 125D-AA etc...) will be active for Ethernet. Plug your



network cable into the port closest to where your computer is and the other end into the computer.

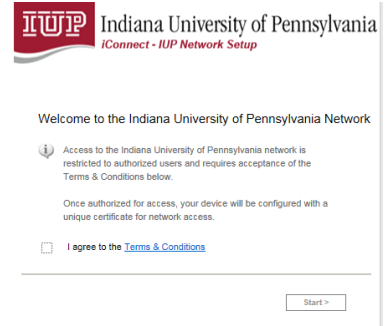
If you are in a **Traditional Residence Hall** (University Towers, and Whitmyre) there will be a data drop box with two Ethernet ports, a phone port (not active) and a cable port. If you are the only one in the room plug one end of your network cable into the AD port and the other end into your computer's network adapter port. If there are two people in the room the second person plugs into the BD port.



## iConnect

Once you connected to the iconnect wireless network or plugged into a network port, open a web browser (Internet Explorer, Chrome, Safari, Firefox, etc...)

The following screen should appear ->

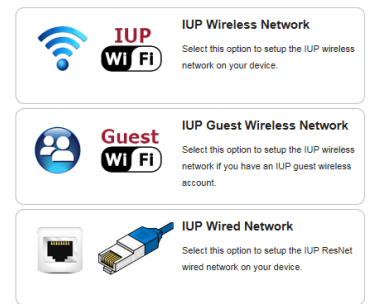


Click on the checkbox next to *I agree to the Terms & Conditions* and then **Next** to continue.

A window that looks like this should appear ->



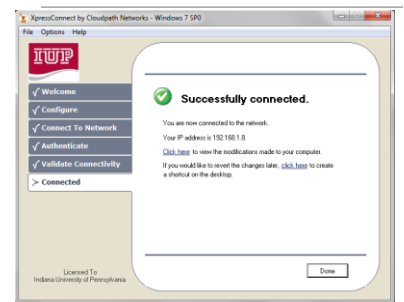
Choose the **IUP Wireless Network** option if you are connecting wirelessly and **IUP Wired Network** if you are connecting through a wired network port. Follow the directions as they appear. You may be asked to download and run a program. Do this to continue with the setup.



You will be asked to enter your IUP username and network password. If you have entered them correctly you should get

to the following screen to showing the setup was successful ->

*You may need to reset your machine after the setup to get on the network and may also be asked to run through the process once more and re-enter your information again. **Please attempt to set this up at least twice before contacting anyone for assistance.** You may setup both wireless and wired on your laptop so you can use the wired connect while you are at your desk.*



**Virus Protection:** Once you are online if you have not already done so you should download and install **Sophos antivirus** to make sure your PC is protected:

- Go to <http://www.iup.edu/itsupportcenter>
- Click on the **Security** icon
- Click on **Virus and Spam** (Read the instructions on the page)
- Click on **Virus Support**
- Click on **Download Sophos** (when prompted for username and password make sure you enter **iupmsd\xxxx** in the username field)



where xxxx is your 4 letter IUP network username and then the network password you created in the password field.)

**Game Machine Registration:** Games Machines and wired media players are allowed on the **wired network**. Go to <http://www.iup.edu/resnet> and click on **How Do I Connect My Computer or Device to the Internet?** for information on setting up other devices such as **game machines**.



**Accessing your IUP Email:** Go to <https://imail.iup.edu/> to access your IUP email. Enter your IUP email username and password. Click on the Settings button to change your password. **Remember to never give out your IUP username and password to anyone, especially via email. IUP will never ask you this information via email.**

#### Logging a call in ihelp

ihelp is an online call logging system students can use when they are having technology issues. You can access ihelp either through the MyIUP portal by clicking on the ihelp quicklink on the home page or by going to [ihelp.iup.edu](http://ihelp.iup.edu).

#### Mapping Network Drives

Browse to <http://www.iup.edu/itsupportcenter/student/> and click on the **How to Map the Standard IUP Network Drives** for information on how to map the P and H drives.

#### Accessing Virtual Computer Lab (VCL)

Browse to [www.iup.edu/itsupportcenter/vcl/](http://www.iup.edu/itsupportcenter/vcl/) and click on **Getting Started with Virtual Computer Lab** for more information on how to connect to a virtual PC.

#### For additional Information/help

If you have problems with your residence hall connection call 724-357-2596 or email us at [iup-resnet@iup.edu](mailto:iup-resnet@iup.edu). For email setup problems, password problems, or other software problems contact the IT Support Center at 724-357-4000 or log a call at [ihelp.iup.edu](http://ihelp.iup.edu)

#### De-activation of Data Ports

IUP reserves the right to disable any Ethernet port without prior notice because of violation of the **ResNet Acceptable Use Policy** (which is listed in the next column). If a port is de-activated because of a violation of this policy there may be a fee to re-activate it. **FILE SHARING IS NOT ALLOWED ON IUP's network!** If an entity holds a copyright on something you are illegally sharing they can sue you.

#### Residential Computing Centers

The office of Housing, Residential Living, and Dining maintains computer labs known as Residential Computing Center's in all on campus housing locations. These labs can be accessed by residents of the buildings they are located in 24 hours a day 7 days a week. Print stations are also available in each of these labs.

#### Residential Computing Center Locations:

Wallwork Hall – Ground Floor North Side, Room G88  
Suites on Pratt – Ground Floor East Side, Room G10  
Stephenson Hall –Ground Floor East Side, Room G40  
University Towers – Use Suites on Pratt RCC  
Whitmyre Hall – First Floor student rooms side, Room 124  
Putt Hall – Ground Floor Center, Room G4  
Delaney Hall – Ground Floor East Side, Room G2  
Suites on Maple East – 2nd Floor Center, Room 204  
Ruddock Hall – Ground Floor Center, Room G2  
Northern Suites – First Floor East Side, Room 111  
Punxsutawney Learning Center – 2<sup>nd</sup> Floor B wing Room B205

#### By connecting to IUP's network you are agreeing to the following Acceptable Use Policy:

#### ResNet Acceptable Use Policy:

In support of the academic mission of the University, Indiana University of Pennsylvania provides students with in-room network connections through the Residential Network (ResNet). To ensure that all university members have access to these computing resources, it is the responsibility of every residential student to use the ResNet network and associated resources responsibly and in compliance with all federal, state, local, IUP, and Housing and Residence Life laws, regulations and policies.

In order to facilitate the administration of the ResNet program and to maintain equitable use of information technology resources, the following policies apply to the use of this service:

- ResNet services and wiring may not be modified or extended beyond the area of their intended use. This applies to all network wiring, hardware, and data ports.
- The use of hubs, switches, routers and wireless access points are prohibited in all residential buildings. No more than one PC can be attached to each data port.
- Attempts to compromise security of another computing resource including but not limited to port scanning is prohibited.
- Setting your PC to use a static IP address is not allowed. You must use the IP address assigned to your PC by IUP's DHCP server.
- No server software of any type is allowed to be run on PCs connected to the Residential Network. This includes but is not limited to peer to peer file server software such as Kazaa, Ares, BitTorrent and Blubster, Web servers, email servers, ftp servers, database servers, DHCP servers, domain servers and gamers servers.
- All PCs on the residential network must have updated virus protection installed.
- All PCs on the residential network must have operating systems with the latest updates installed.
- Once you have plugged into a data port in your assigned housing assignment it becomes your data port. Residents are prohibited from plugging into another port unless a room change has been approved and the student has moved into the new assignment.
- ResNet may not be used to provide Internet access to anyone outside of the university community for any purpose.
- ResNet is a shared resource. Therefore, the use of network applications that inhibit or interfere with the use of the network by others is not permitted. Examples include but are not limited to: use of an IP address not registered to you; use of an application which utilizes an unusually high portion of the bandwidth for extended periods of time.
- ResNet cannot be used for commercial purposes.
- Forgery or other misrepresentation of one's identity via electronic or any other form of communication could result in prosecution under state and federal laws.
- Students are personally responsible for all use of their computer and network connection and will be held accountable for any violation that occurs in connection with their use. Students should allow their computers to be used by others only with full understanding of the potential consequences of such action.

Violations of this ResNet Acceptable Use Policy and/or the Policies and Regulations Regarding Student Behavior (<http://www.iup.edu/studentconduct/thefsource/>) will be adjudicated, as appropriate, through the judicial system. Sanctions imposed as a result of such violations may include, but are not limited to:

- Suspension or Termination of residential network access
- Monetary reimbursement to the university and/or other injured parties
- In addition, violations may be prosecuted under applicable civil or criminal laws.

By connecting a personal computer to the ResNet service, the student agrees to abide by the university's regulations regarding the use of the residential network as detailed in this policy, the Source, the Residence Hall Housing License Agreement, the Choices and Changes Handbook for Residence Hall Living, the Undergraduate Catalog and all relevant local, state and federal laws, including The Digital Millennium Copyright Act of 1998.

It is further understood that ResNet network access is a privilege that can and will be revoked if actions by an individual are deemed detrimental to and/or inappropriate in the use of the network and its functioning and may also result in other university, local, state or federal charges.