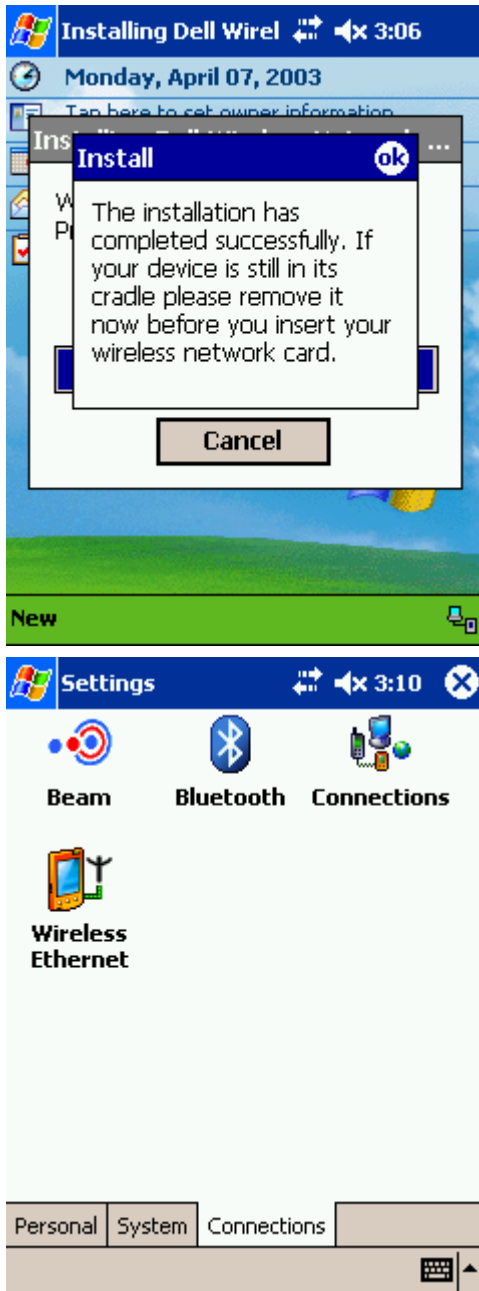
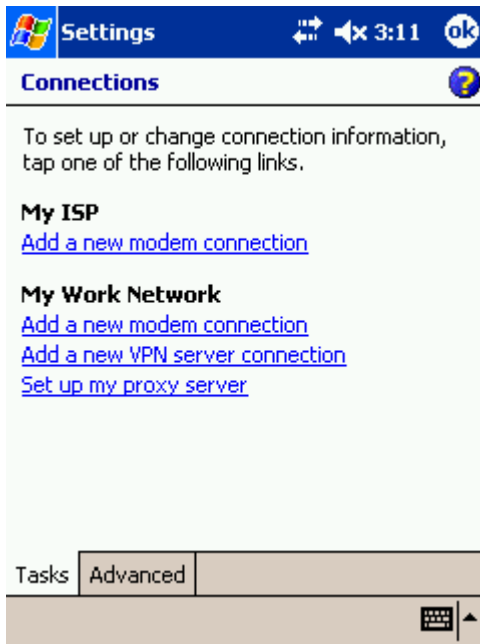


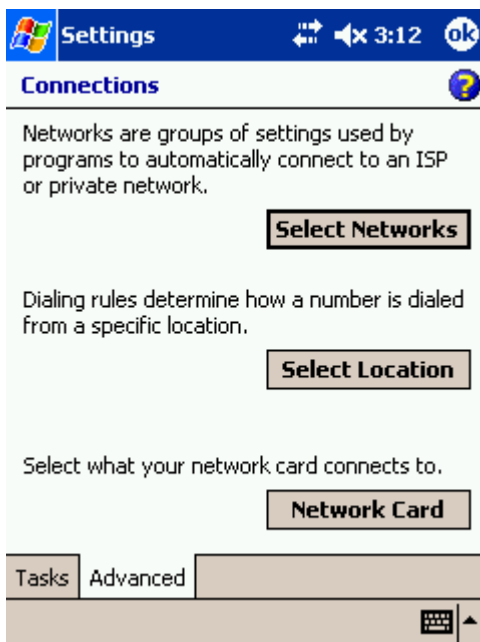
IUP Wireless Setup on Windows Mobile 2003



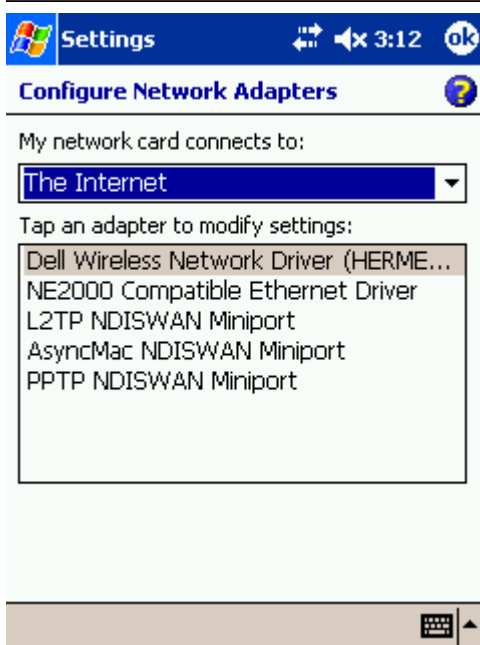
- Install your wireless network driver/software that came with your wireless card. Your manufacturer will provide details on how to do this.
- Open the Settings control panel and click on the Connections tab. Click the Connections icon in the Connections tab.



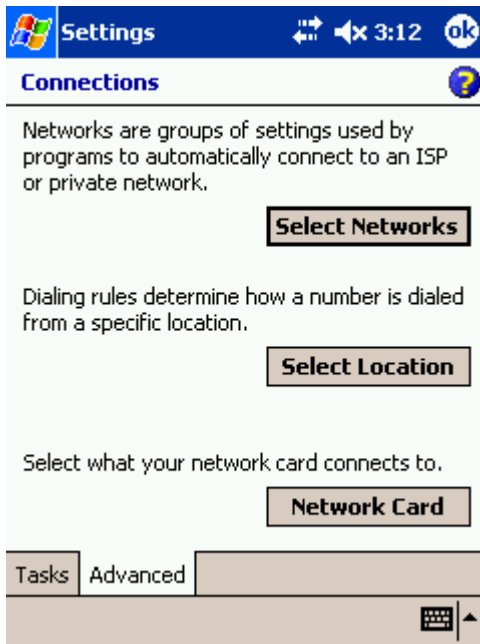
- You will now be at this screen. Click the Advanced tab.



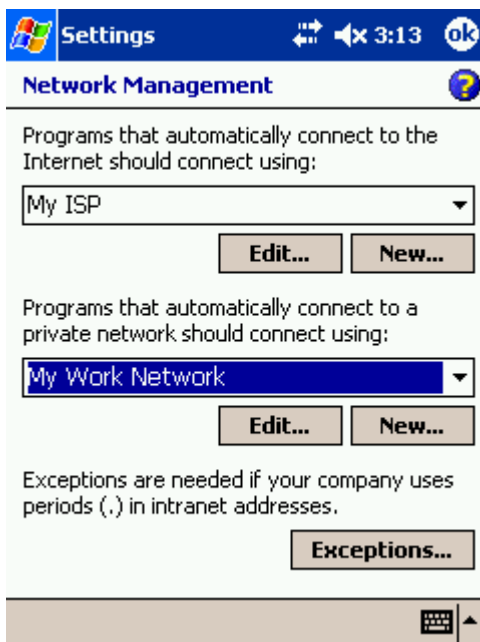
- To verify your wireless network driver installed correctly, click on the Network Card button toward the bottom of the screen.



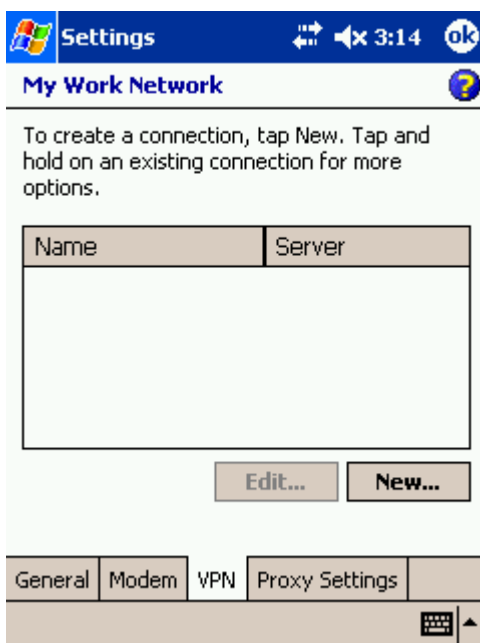
- Click on the wireless network card driver and make sure it is set to connect to "The Internet". Click OK when done.



- Click the Select Networks button in the Connections window.



- Click on the Edit button under "My Work Network".



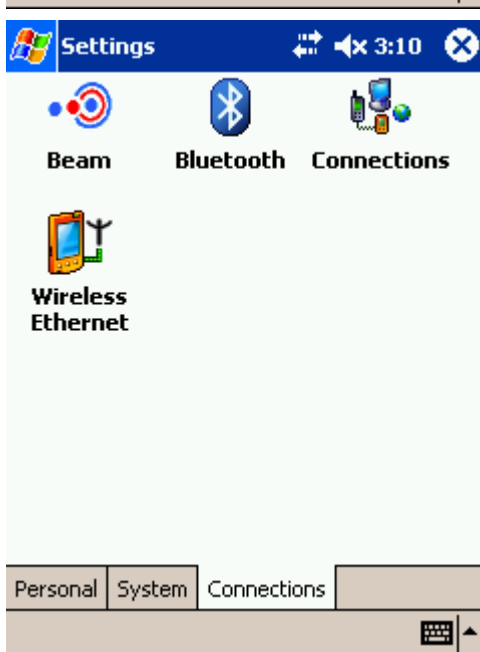
- Once in the My Work Network Settings page, click on the VPN tab on the bottom of the screen.



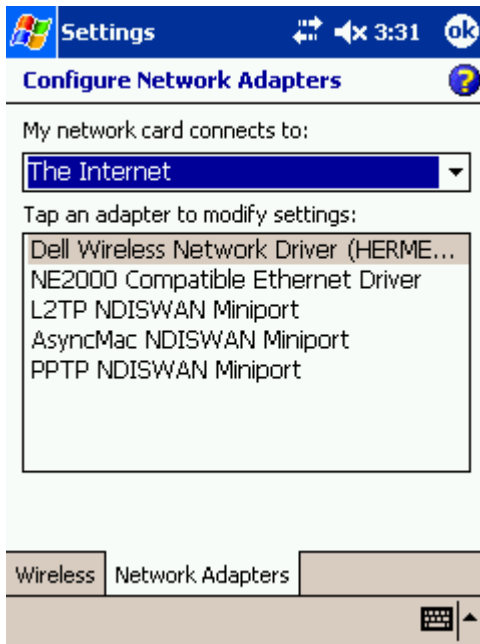
- Enter in the following information as pictured. Be sure to select PPTP under VPN Type. After you are finished, click next.



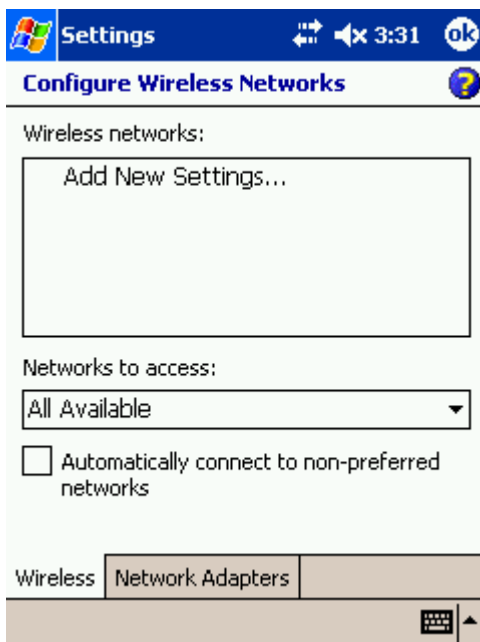
- Enter your IUP network username, password, and domain. Click Finish when done.



- Click on the Settings control panel from the main menu. Then click on the Connections tab. Click the Connections icon in the Connections Settings window.



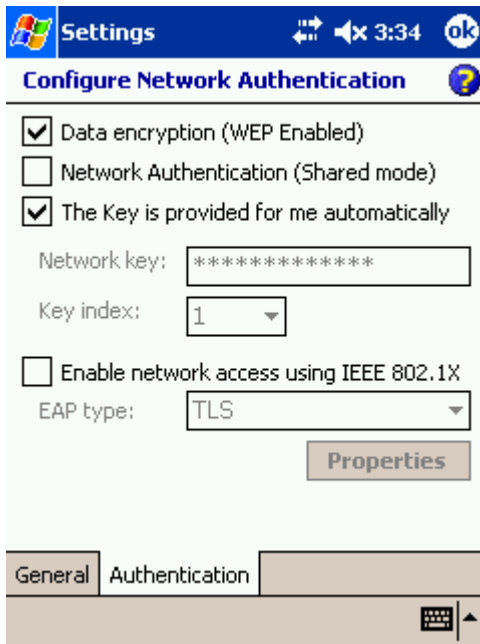
- Click on your wireless card driver and make sure it is set to connect to "The Internet". Next, click on the Wireless tab below. If the wireless tab does not appear, your wireless card may not be installed correctly or you may have to use other 3rd party software to add a WEP key and configure your wireless network card. See your manufacturer's manual for details.



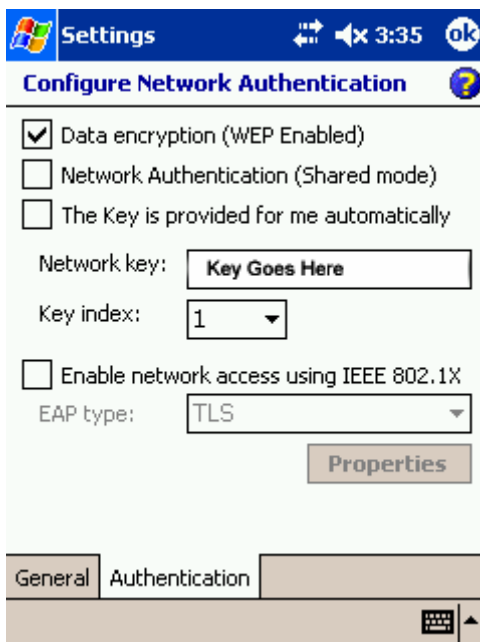
- You should see the following screen if your network card is installed correctly. Click Add New Settings.



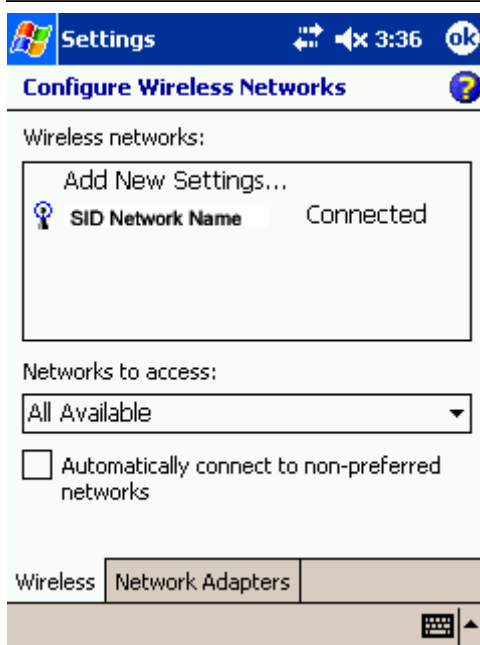
- Under Network Name, enter the IUP wireless network SID ([contact your support representative](#) to obtain this), and in the Connects To field, make sure to select "The Internet". Next click the Authentication tab below.



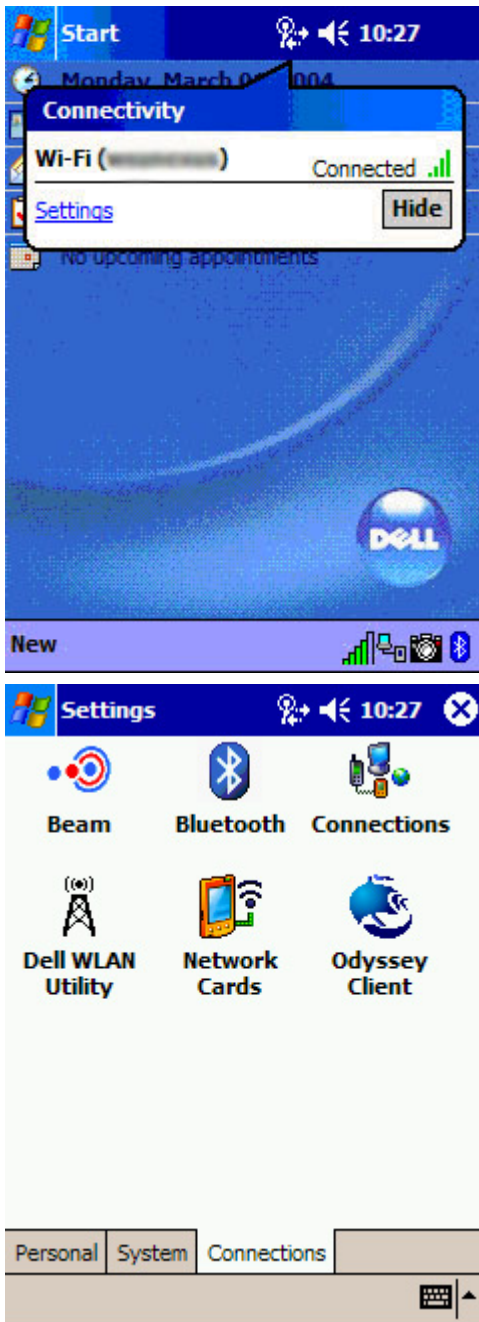
- This is what the Authentication page looks like by default.




- Remove the "The Key is provided for me automatically" option. Next, enter in the IUP WEP Key ([contact your support representative](#) to obtain this), and then click ok.



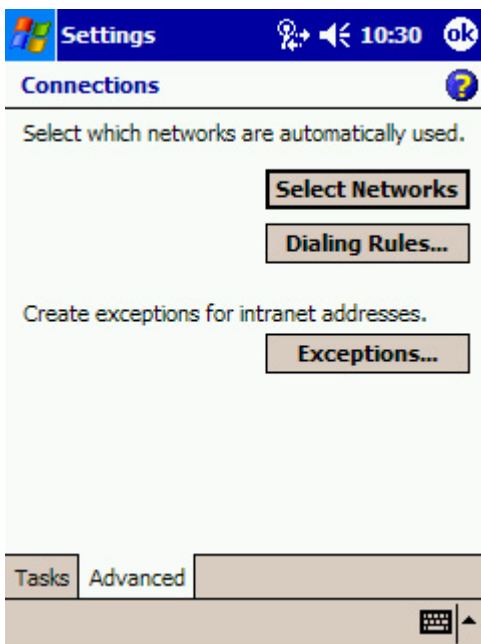
- You will now see that your wireless network card is connected to the IUP internal wireless network. If it does not show connected, you may have to wait a few more minutes, or close and reopen the Settings control panel for the settings to take effect.



- Tap on the  icon to bring up the Connectivity window. Then tap on the Settings selection to bring up the Settings screen
- In the Settings screen, tap on the Connections icon.
- In the Settings/Connections window, tap on the Advanced tab at the bottom of the screen



- In the Settings/Connections window, tap on the Advanced tab at the bottom of the screen



- Next, tap on the Exceptions button half way down the screen.



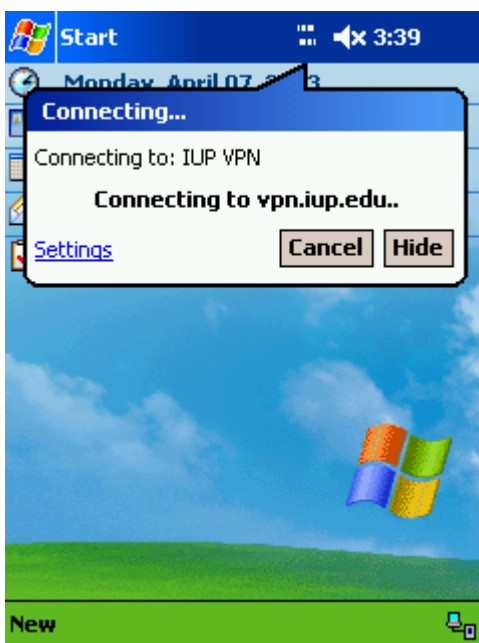
- Tap on Add new URL...



- In the Work URL: box, type *.* , then tap the OK at the top, right corner of the screen.



- To get out of the IUP internal wireless network and connect to the Internet, you will need to connect to the IUP VPN. This is done by selecting the Network icon in the top menu bar, and then clicking on the Connect VPN link.



- You will see a dialog stating that it is connecting. Once the dialog goes away, you should be connected to the Internet. If you get a VPN error, you may need to fix any mistakes in your VPN connection information.

