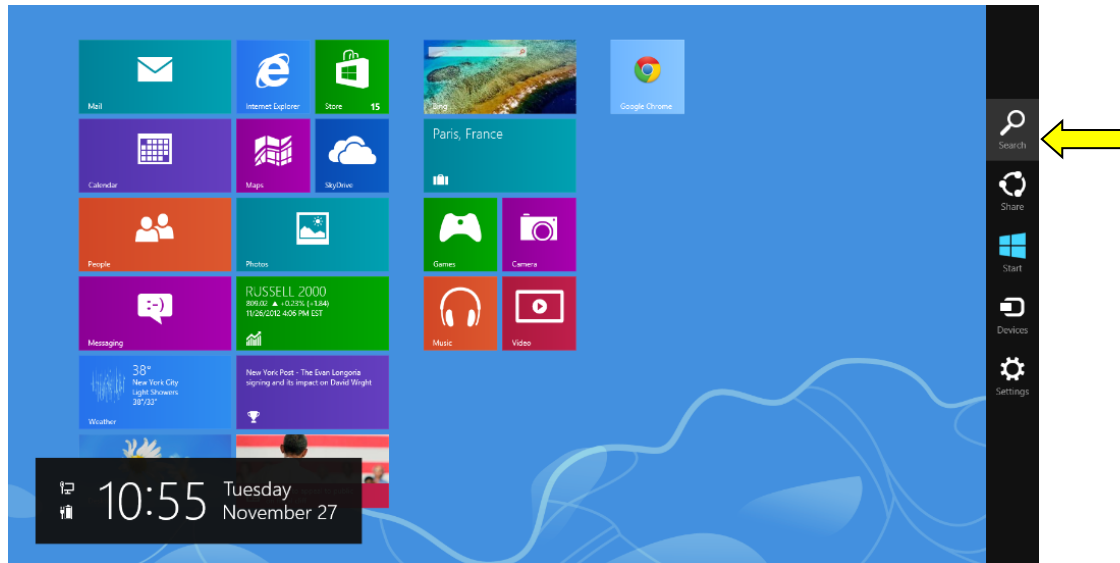


Connect to the IUP Virtual Private Network using Windows 8

Before you can create this connection, you *MUST* first connect to your Internet Service Provider (ISP).

It is important to **disconnect from the VPN** as soon as you have finished using your network resources

1. Access the **Search Menu** from the **Windows 8 Charms Bar**.

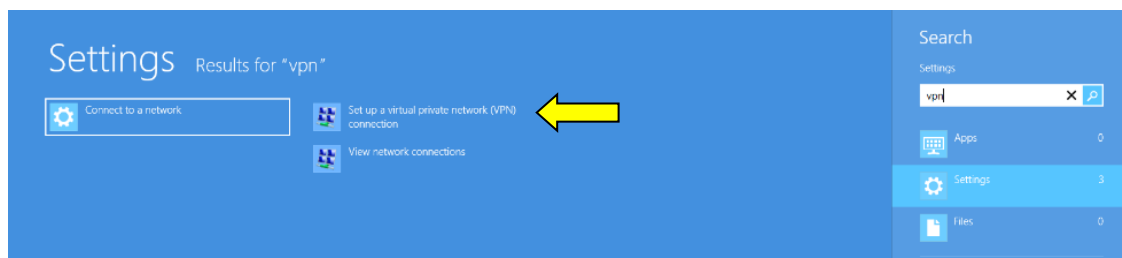


- Move the mouse cursor to the upper right corner of the screen until the Charms Bar appears.
- Select **Search**.

2. Click **Settings**

3. Type **VPN** in the Search Box

4. In the Search Results, click **Set up a virtual private network (VPN) connection**



5. Type in the Internet address to connect to and the Destination name.

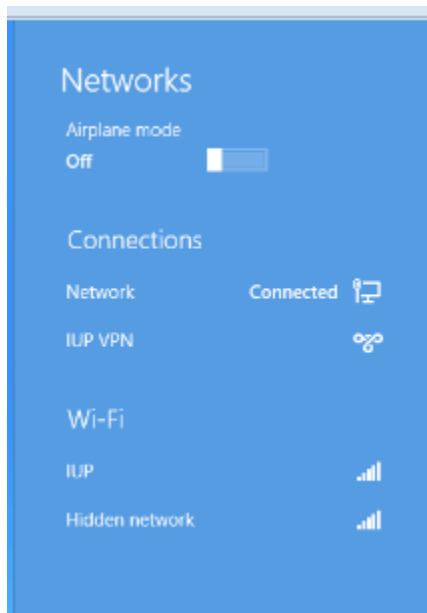
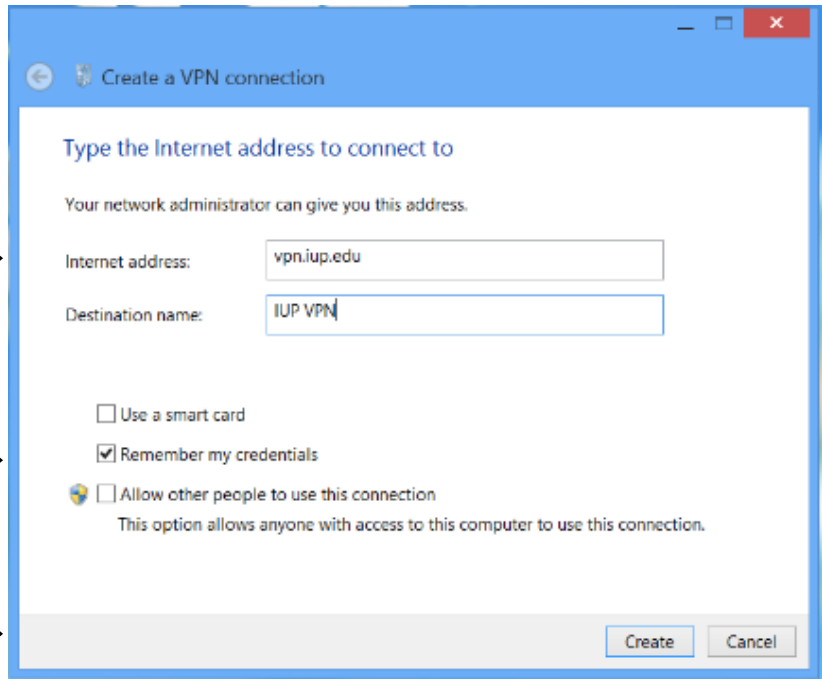
- Internet address:
vpn.iup.edu
- Destination name:
IUP VPN



6. Leave the Remember my credentials box checked.



7. Click **Create**



You should then see a Networks window appear, similar to the one shown here.

8. **Right click** on the **IUP VPN** connection.

9. Choose **View Connection Properties**



View connection properties
Clear cached credentials

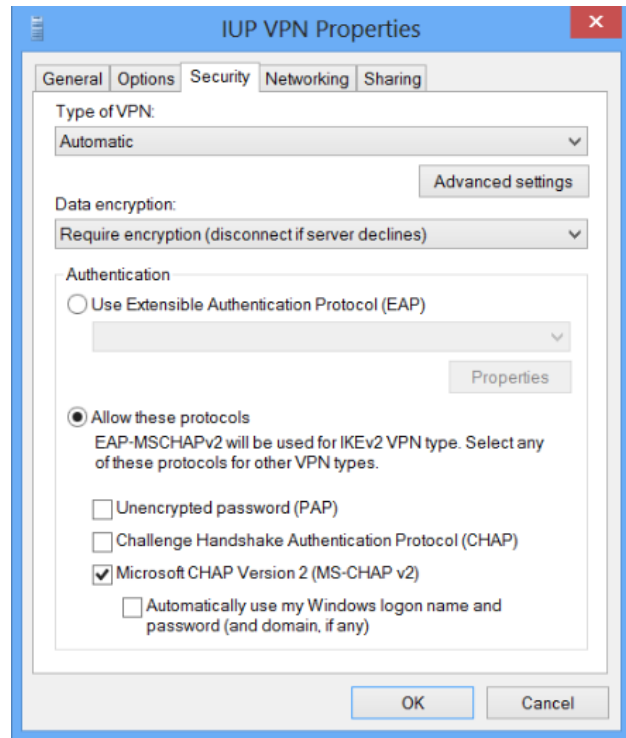
10. Click the **Security** tab



11. Click the **Allow these protocols** button.



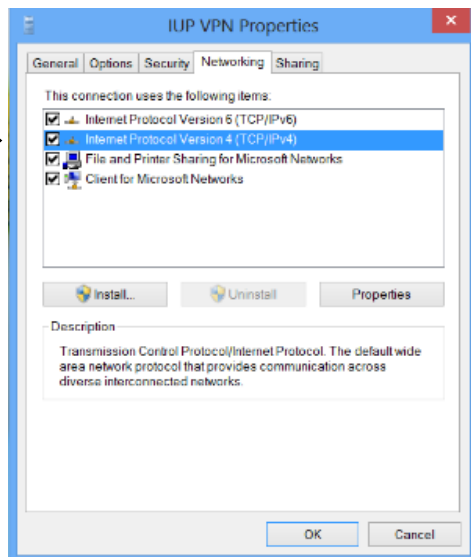
*** Don't Click Ok yet ***



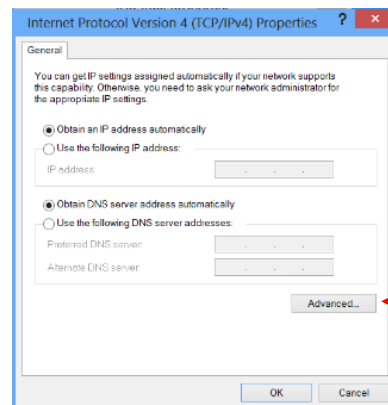
12. Click the **Networking** tab

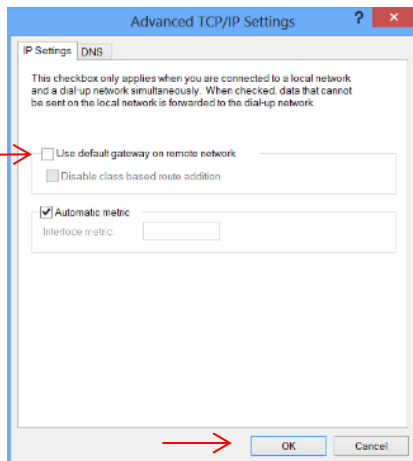
13. Click once on Internet Protocol Version 4 (TCP/IPv4) to highlight it.

14. Click Properties.



15. Click the Advanced... button.

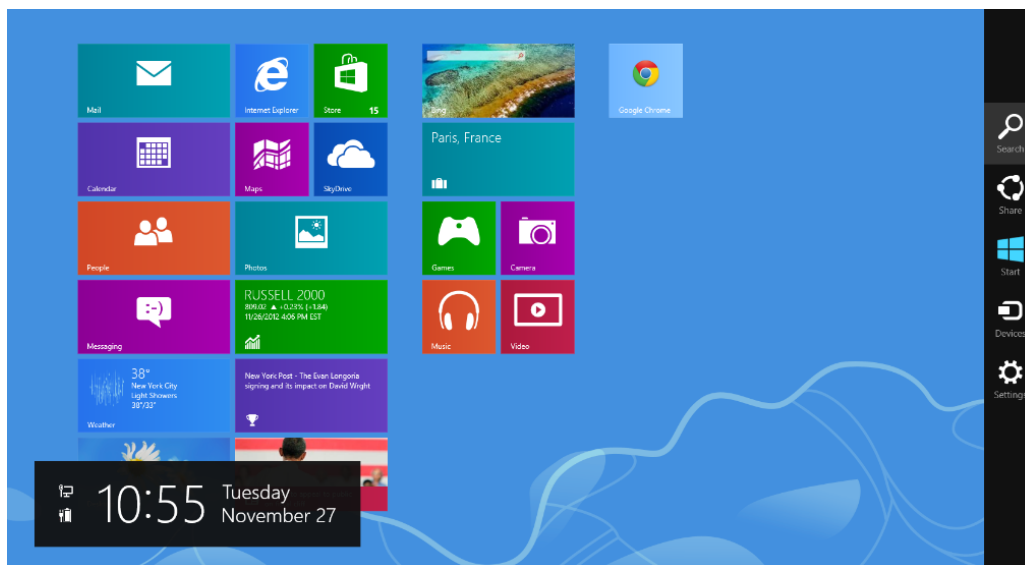




16. **Uncheck** Use default gateway on remote network

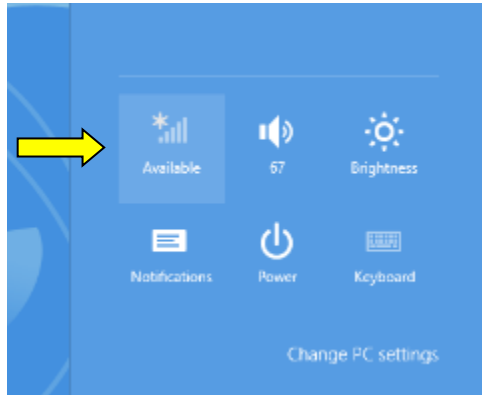
17. Click **Ok 3 times** until you are back at the Desktop.

18. Access the **Settings Menu** from the **Windows 8 Charms Bar**.



- Move the mouse cursor to the upper right corner of the screen until the Charms Bar appears.
- Select **Settings**.

19. Then select **Available**.

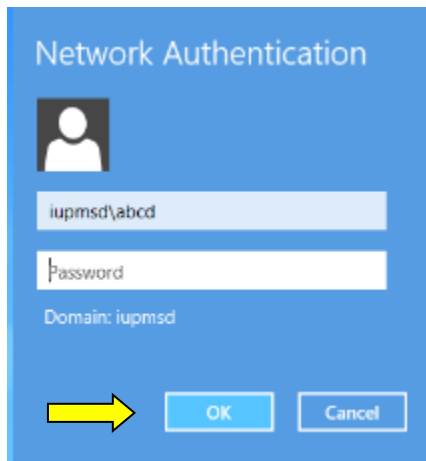


Note: This may also say “Network”, or the name of your WiFi connection, or something similar.

You will want to click the button in the left corner of this area regardless of the name.

20. Click **IUP VPN**.

21. Click **Connect**.



22. **Enter your IUP credentials** as follows:

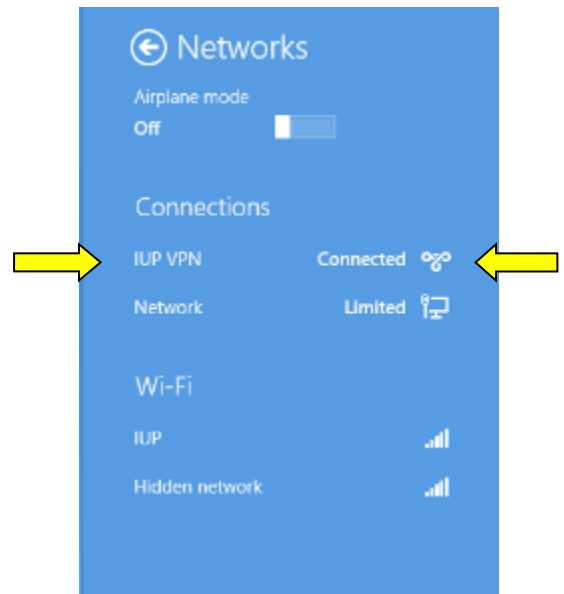
User Name = iupmsd\abcd

Password = your current network password

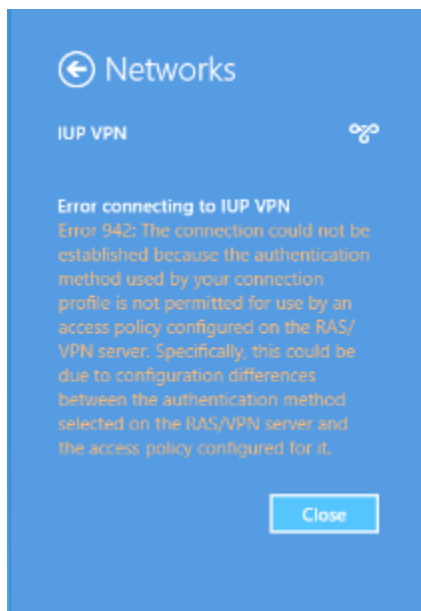
23. Click **Ok**.

19. Once your credentials have been verified, you will see the **IUP VPN Connected** status.

24. You are now connected to the IUP VPN.



If you see the following error message – please repeat Steps 8 - 17:



IUP VPN

Error connecting to the IUP VPN

Error 942: The connection could not be established because the authentication method used by your connection profile is not permitted for use by an access policy configured on the RAS/VPN server. Specifically, this could be due to configuration differences between the authentication method selected on the RAS/VPN server and the access policy configured for it.