



Indiana University of Pennsylvania

JAZZ ENSEMBLES

Needed: Saxophones, trumpets, trombones, piano,
bass, guitar, drums, aux. perc, vocal

Advanced Jazz Ensemble will perform at PMEA State Conference!



AUDITIONS

Wednesday, January 24

12:00-3:00

in room 116

Signup online; link found in audition packet

Audition music is available on the
IUP Music Ensemble auditions web page

<https://www.iup.edu/music/ensembles/music-ensemble-auditions.html>

For more information, contact Dr. Flowers at jflowers@iup.edu



IUP Jazz Audition Materials S2024

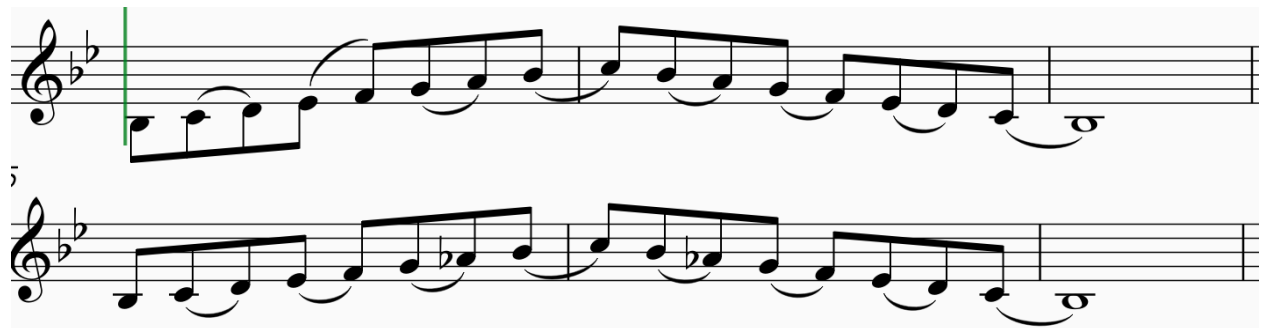
Sign up here: [IUP Jazz Audition Signup S2024 .xlsx](#)

Recordings:

[Shared Recordings](#)

In addition to the music below, please be prepared to perform the following:

Everyone excluding drums: Concert Bb and Bb mixolydian in swing eighths with the articulation found below, vocalists may choose their own syllable (Doo-ba doo-ba works well)



Piano, Guitar, and Bass: If possible, demonstrate the ability to create a stylistic part from just a chord progression. Piano and guitar, please be able to “comp” as you would behind a soloist

1. Medium swing
2. Fast swing
3. Bossa Nova
4. Funk

Please use the following chord progression:

Ami7 | D7(b9) | GMA7 | CMA7 | F#mi7(b5) | B7(#5,#9) | Emi(MA7) | E7(b9)|

Drums: Be prepared to play 16 measures of the following grooves: Medium Swing, Fast Swing, Bossa Nova, Samba, Funk



IND Line

Jim Snidero

$\text{♩} = 90$

CHORUS 1

CA D9#5

5 D- G7#9 b13 E7#9 A13#9#11 D7#9 G13#9#11

9 CA D9#5

13 D-7 G7#13 C6 *(C7#9 B7#9 Bb7#9 A7#9 Ab7#9 G7#9 Gb7#9)

*chromatic V#9 chords starting on C7#9 (V) leading to Gb7#9 (bII)

17 F6 (C7 F# C7 F) (C7 F6 C7 F#) A-11 D7#11 D-11

23 G7alt. C6 (G7 CA G) D7#11

29 D-9 G7 CA D7 G7^{13b9} CA **CHORUS 2**

35 D7^{#11} D-7 G7 C6 A7alt. D7alt G7^{b9}

41 C6 (G7 CA) (#5 b5) D7 (Eb-11) D-11 G7

47 C7alt. FA (G-) F6 (FA G-7 FA G-7 E7alt.) D7

53 A- D7¹³ Eb/G Db/G CA C6 D7^{#11}

8^{vb} 8^{vb}

59 D-11 G7^{b9} CA C6⁹

X51

KENDOR PRESENTS

Bird Count

PIANO

composed & arranged
by Maria Schneider

RAUCOUS SWING $d=110$

Handwritten musical score for piano accompaniment. The score consists of 11 systems of two staves each. The first staff of each system is the treble clef, and the second is the bass clef. The key signature is one flat (Bb). The time signature is 4/4. The score is marked with various dynamics and articulations, including *mf* and *mfz*. Measure numbers 9, 21, 33, 45, and 67 are circled in red. Chord symbols are written above the staves, including $F7$, $Bb7$, $C7$, and $F13$. The final system (measures 67-72) includes detailed chord voicings with accidentals and extensions, such as $F13(\#11)$, $E13(\#9)$, and $Bb13(\#9)$. A red bracket is drawn on the right side of the score, spanning from measure 33 to the end.

3207

COPYRIGHT © 1992 BY MSF MUSIC - USED BY PERMISSION
 ALL RIGHTS RESERVED - INTERNATIONAL COPYRIGHT SECURED - MADE IN U.S.A.
 UNAUTHORIZED DUPLICATION, ADAPTATION OR ARRANGEMENT IS PROHIBITED BY LAW.
 SOLE SELLING AGENT: KENDOR MUSIC, INC., DELEVAN NY 14042 U.S.A.

G#

6